

229° 55' E
ALICE NORTH

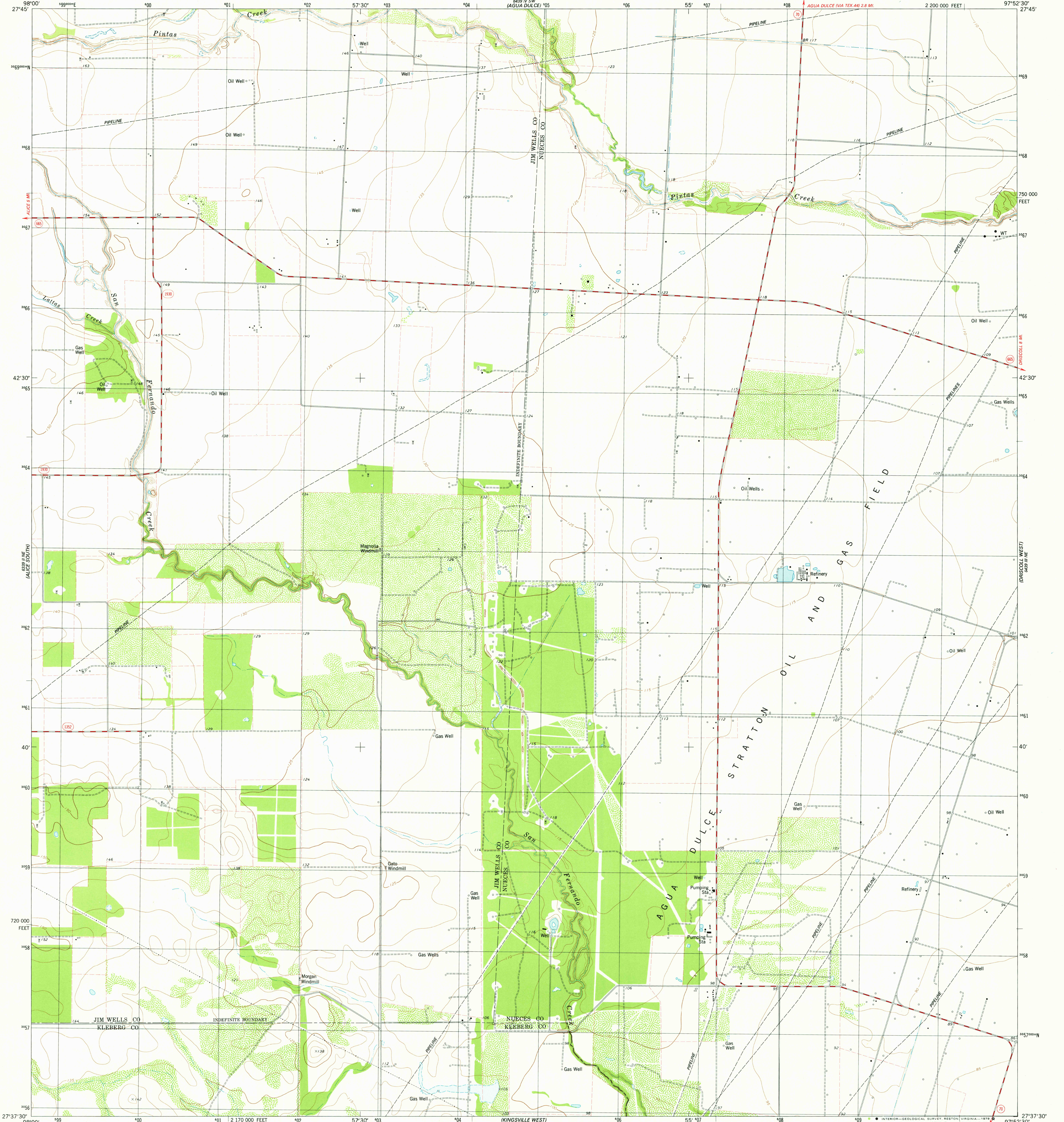
229° 55' E
ALICE NORTH

UNITED STATES
DEPARTMENT OF THE INTERIOR
GEOLOGICAL SURVEY



STATE OF TEXAS
TEXAS DEPARTMENT OF WATER RESOURCES

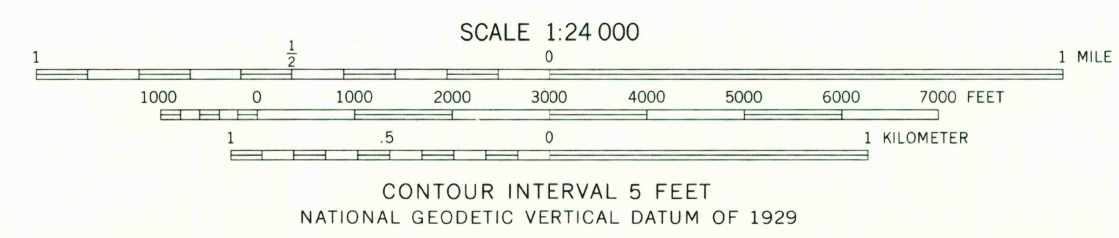
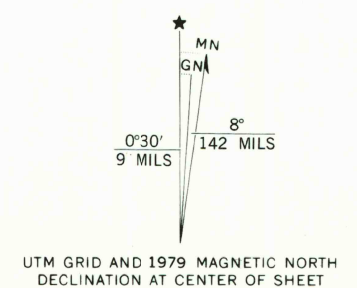
KINGSVILLE NW QUADRANGLE
TEXAS
7.5 MINUTE SERIES (TOPOGRAPHIC)
NW 4 KINGSVILLE 15' QUADRANGLE



189° 00' SE
ALICE SE

189° 00' SE
ALICE SE

Mapped, edited, and published by the Geological Survey
Control by USGS and NOS/NOAA
Topography by photogrammetric methods from aerial photographs taken 1974. Field checked 1975. Map edited 1979
Projection and 10,000-foot grid ticks. Texas coordinate system, south zone (Lambert conformal conic) 1000-meter Universal Transverse Mercator grid, zone 14 1927 North American datum
Fine red dashed lines indicate selected fence lines



ROAD CLASSIFICATION
Primary highway, hard surface
Secondary highway, hard surface
Light-duty road, hard or improved surface
Unimproved road
Interstate Route
U. S. Route
State Route

USGS
Historical File
Topographic Division

OCT 22 1979
KINGSVILLE NW, TEX.
NW 4 KINGSVILLE 15' QUADRANGLE
N2737.5-W9752.5/7.5
1979
AMS 6439 III NW-SERIES V882

THIS MAP COMPLIES WITH NATIONAL MAP ACCURACY STANDARDS
FOR SALE BY U. S. GEOLOGICAL SURVEY, DENVER, COLORADO 80225, OR RESTON, VIRGINIA 22092
A FOLDER DESCRIBING TOPOGRAPHIC MAPS AND SYMBOLS IS AVAILABLE ON REQUEST

2797-323

2130