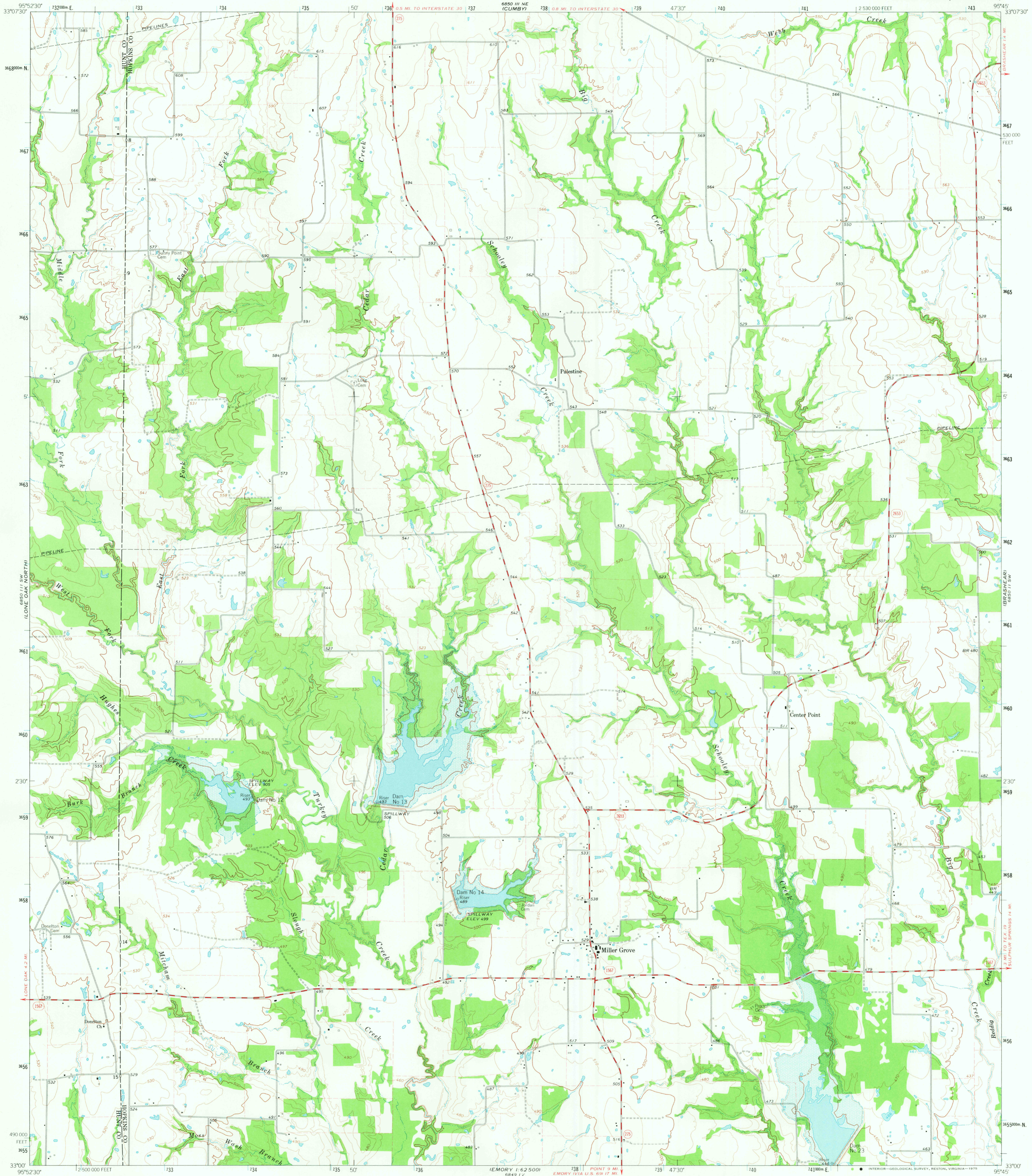
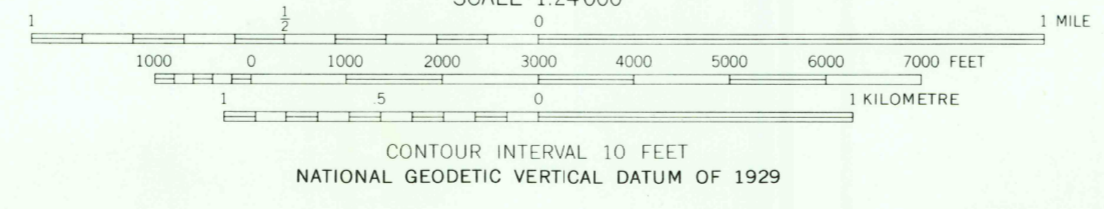
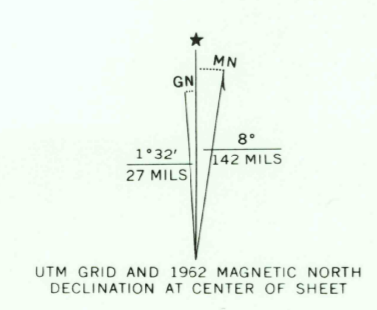


6880 III SE  
CUMBER  
SOUTH

6880 III NW  
GAFFERD  
CHAPPED



Mapped, edited, and published by the Geological Survey  
Control by USGS and USC&GS  
Topography by photogrammetric methods from aerial  
photographs taken 1962. Field checked 1962  
Polyconic projection. 1927 North American datum  
10,000 foot grid based on Texas coordinate system, north central zone  
1000 metre Universal Transverse Mercator grid ticks,  
zone 15, shown in blue  
Fine red dashed lines indicate selected fence lines  
Areas covered by dashed light blue pattern are subject  
to controlled inundation



ROAD CLASSIFICATION 1965  
Medium-duty ——— Light-duty ———  
Unimproved dirt ———  
State Route ○

THIS MAP COMPLIES WITH NATIONAL MAP ACCURACY STANDARDS  
FOR SALE BY U. S. GEOLOGICAL SURVEY, DENVER, COLORADO 80225, OR RESTON, VIRGINIA 22092  
A FOLDER DESCRIBING TOPOGRAPHIC MAPS AND SYMBOLS IS AVAILABLE ON REQUEST

USGS  
HISTORICAL FILE  
TOPOGRAPHIC DIVISION

MILLER GROVE, TEX. OCT 2 1 1975  
N3300-W9545/7.5  
1962

AMS 6850 III SE - SERIES V882

RETURN TO:  
USGS AND HISTORICAL MAP ARCHIVES