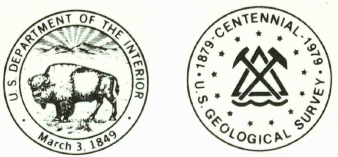


44° 11' 15" N
100° 00' 00" W

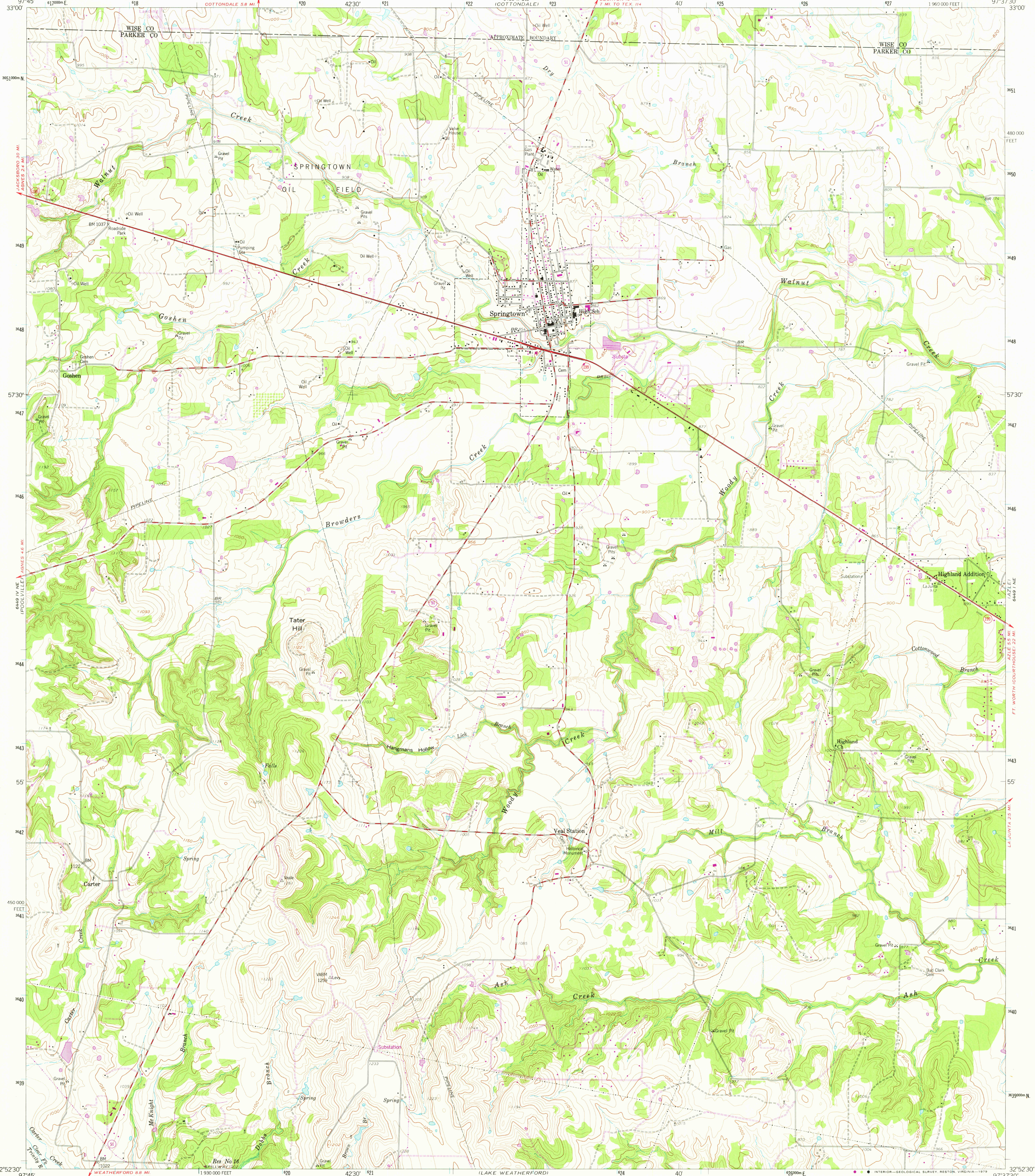
UNITED STATES
DEPARTMENT OF THE INTERIOR
GEOLOGICAL SURVEY



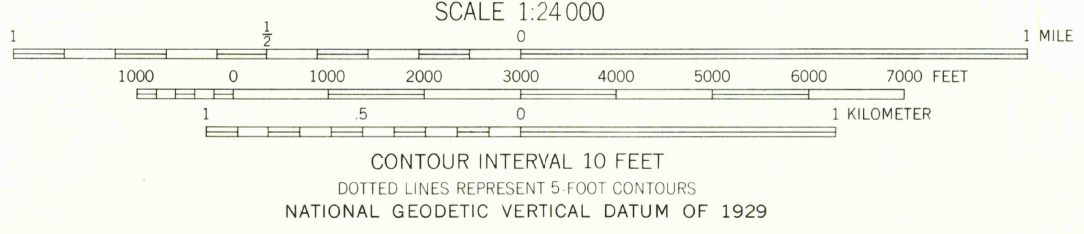
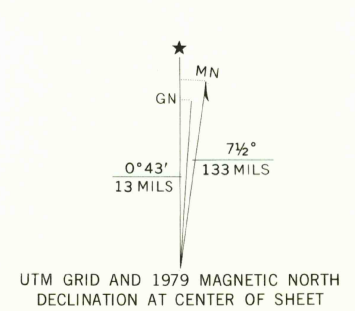
SPRINGTOWN QUADRANGLE
TEXAS

7.5 MINUTE SERIES (TOPOGRAPHIC)
NW 1/4 SPRINGTOWN 15 QUADRANGLE
1:960 000 FEET

44° 11' 15" N
100° 00' 00" W



Mapped, edited, and published by the Geological Survey
Control by USGS and USC&GS
Topography from aerial photographs by photogrammetric methods
Aerial photographs taken 1957. Field check 1958
Polyconic projection. 1927 North American datum
10,000-foot grid based on Texas coordinate system,
north central zone
1000-meter Universal Transverse Mercator grid ticks,
zone 14, shown in blue
Areas covered by dashed light-blue pattern
are subject to controlled inundation
Unchecked elevations are shown in brown
Revisions shown in purple and woodland compiled from
aerial photographs taken 1976 and other source data
This information not field checked. Map edited 1979



ROAD CLASSIFICATION
Heavy-duty ——— Light-duty ———
Medium-duty ——— Unimproved dirt ———
○ Slate Route

USGS
Historical File
Topographic Division

SPRINGTOWN, TEX.
NW 1/4 SPRINGTOWN 15 QUADRANGLE
N3252.5-W9737.5/7.5
1958
PHOTOREVISED 1979
AMS 6449 I NW-SERIES V882

MAY 14 1979

1850

THIS MAP COMPLIES WITH NATIONAL MAP ACCURACY STANDARDS
FOR SALE BY U.S. GEOLOGICAL SURVEY, DENVER, COLORADO 80225, OR RESTON, VIRGINIA 22092
A FOLDER DESCRIBING TOPOGRAPHIC MAPS AND SYMBOLS IS AVAILABLE ON REQUEST

3297-343