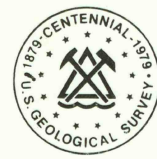


6439 III NE  
(DRISCOLL WEST)

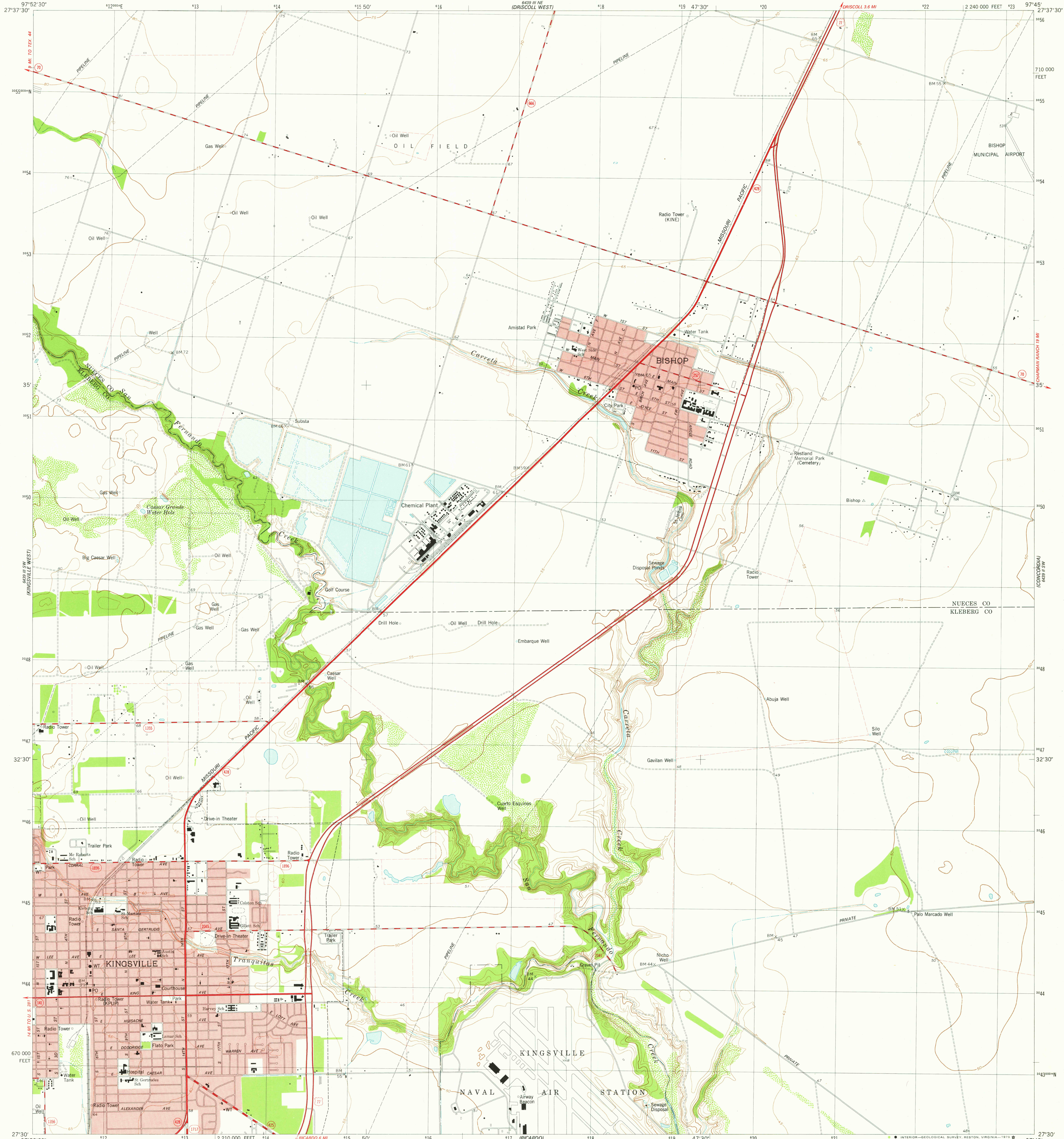
UNITED STATES  
DEPARTMENT OF THE INTERIOR  
GEOLOGICAL SURVEY



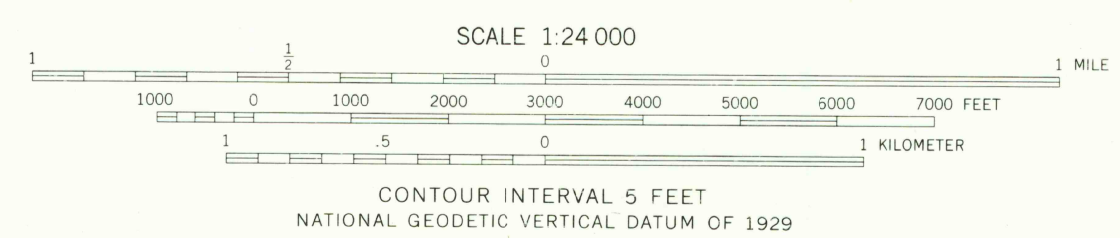
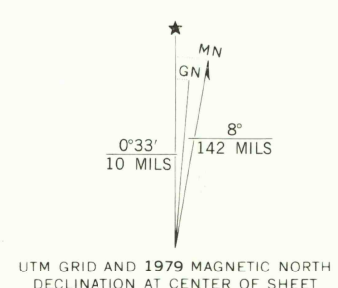
STATE OF TEXAS  
TEXAS DEPARTMENT OF WATER RESOURCES

KINGSVILLE EAST QUADRANGLE  
TEXAS  
7.5 MINUTE SERIES (TOPOGRAPHIC)  
SE 1/4 KINGSVILLE 15' QUADRANGLE

6439 III NE  
(DRISCOLL EAST)



Mapped, edited, and published by the Geological Survey  
Control by USGS and NOS/NOAA  
Topography by photogrammetric methods from aerial photographs  
taken 1974. Field checked 1975. Map edited 1979  
Projection and 10,000-foot grid ticks: Texas  
coordinate system, south zone (Lambert conformal conic)  
1000-meter Universal Transverse Mercator grid, zone 14  
1927 North American datum  
Red tint indicates areas in which only landmark buildings are shown  
Fine red dashed lines indicate selected fence lines



ROAD CLASSIFICATION

Primary highway, hard surface	Light duty road, hard or improved surface
Secondary highway, hard surface	Unimproved road
Interstate Route	U.S. Route
	State Route



THIS MAP COMPLIES WITH NATIONAL MAP ACCURACY STANDARDS  
FOR SALE BY U.S. GEOLOGICAL SURVEY, DENVER, COLORADO 80225, OR RESTON, VIRGINIA 22092  
A FOLDER DESCRIBING TOPOGRAPHIC MAPS AND SYMBOLS IS AVAILABLE ON REQUEST

USGS  
Historical File  
Topographic Division

KINGSVILLE EAST, TEX.  
SE 1/4 KINGSVILLE 15' QUADRANGLE  
N2730-W9745/7.5

2797-321

1979

AUG 3 1979

AMS 6439 III SE--SERIES V882

2000