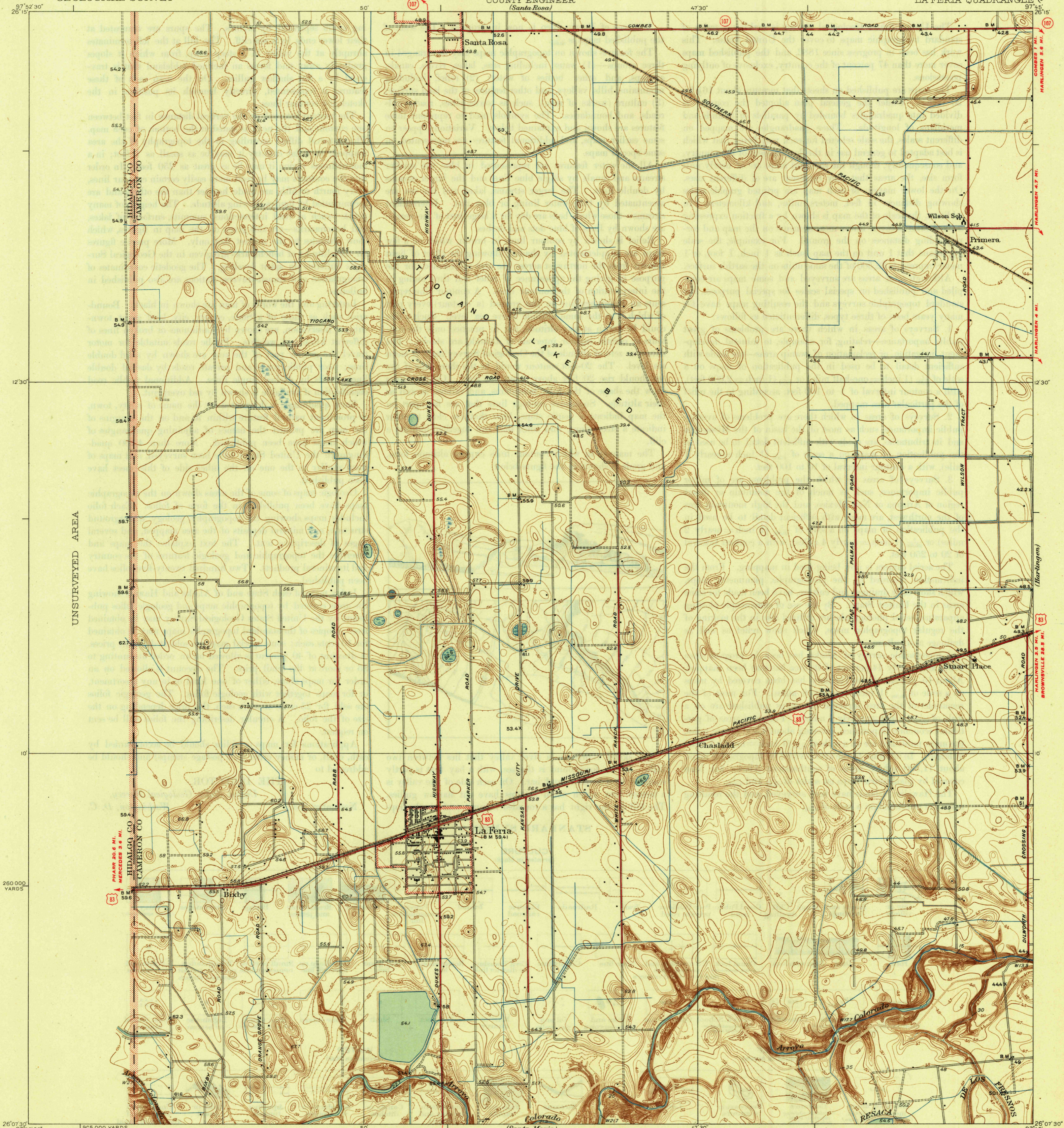


U. S. G. S.
FILE COPY
Inspection and Editing.

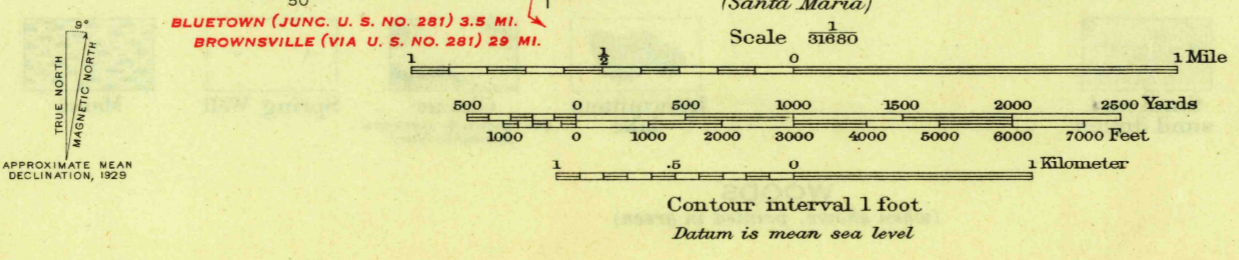
UNITED STATES
DEPARTMENT OF THE INTERIOR
GEOLOGICAL SURVEY

CAMERON COUNTY, TEXAS
REPRESENTED BY THE
COUNTY ENGINEER
(Santa Rosa)

TEXAS
(CAMERON COUNTY)
LA FERIA QUADRANGLE
(Combes)



Topography by R.H. Reineck, R.W. Burchard,
T.F. Murphy, and J.B. Leachman
Surveyed in 1929



ROUTES USUALLY TRAVELED
HARD IMPERVIOUS SURFACES
OTHER SURFACE IMPROVEMENTS
U. S. ROUTE 1945
STATE ROUTE

Polyconic projection, North American datum
5000 yard grid based upon U.S. zone system, D
Irrigation canals are not contoured

LA FERIA, TEX.
Edition of 1936
reprinted 1945
N26075-W9745/75

U. S. G. S.
FILE COPY
Inspection and Editing.

MAY 28 1945