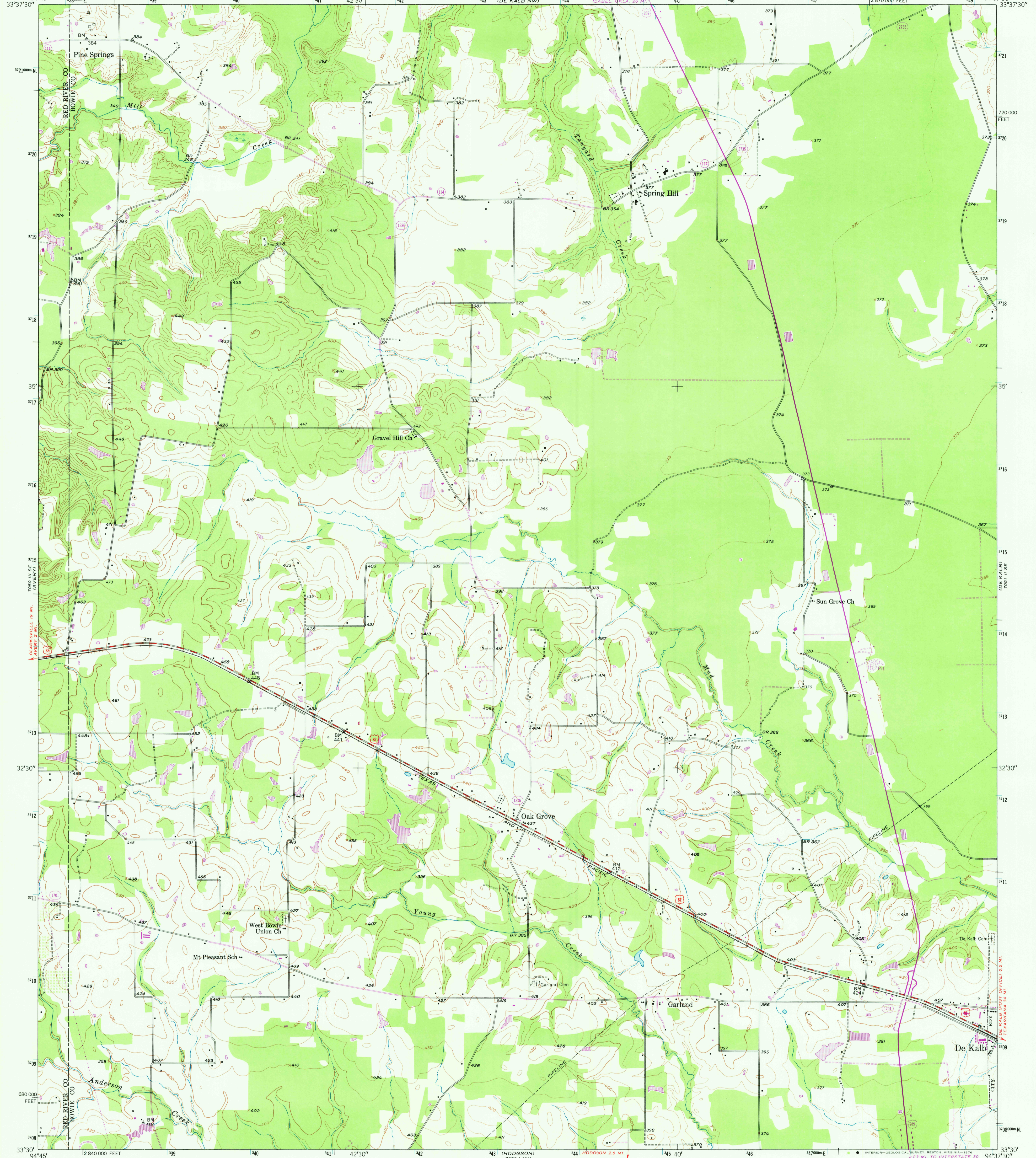


280 1/4 IN. (ENCL. 15)

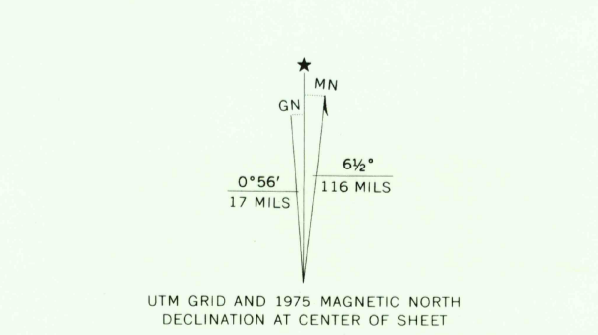
UNITED STATES DEPARTMENT OF THE INTERIOR GEOLOGICAL SURVEY

OAK GROVE QUADRANGLE TEXAS 7.5 MINUTE SERIES (TOPOGRAPHIC)

700 1/4 IN. (FROM)



Mapped, edited, and published by the Geological Survey Control by USCE, USGS, and USC&GS Culture and drainage in part compiled from aerial photographs taken 1948 Topography by plane-table methods 1949-1950 and in part by United States Corps of Engineers Polyconic projection. 1927 North American datum 10,000-foot grid based on Texas coordinate system, north central zone 1000-metre Universal Transverse Mercator grid ticks, zone 15, shown in blue Revisions shown in purple compiled from aerial photographs taken 1975. This information not field checked



SCALE 1:24 000 CONTOUR INTERVAL 10 FEET DOTTED LINES REPRESENT 5-FOOT CONTOURS NATIONAL GEODETIC VERTICAL DATUM OF 1929



ROAD CLASSIFICATION table with categories: Heavy-duty, Medium-duty, Light-duty, Unimproved dirt, U. S. Route, State Route.

THIS MAP COMPLIES WITH NATIONAL MAP ACCURACY STANDARDS FOR SALE BY U. S. GEOLOGICAL SURVEY, DENVER, COLORADO 80225, OR RESTON, VIRGINIA 22092 A FOLDER DESCRIBING TOPOGRAPHIC MAPS AND SYMBOLS IS AVAILABLE ON REQUEST

USGS Historical File Topographic Division

OAK GROVE, TEX. N3330-W9437.5/7.5

1950 PHOTOREVISED 1975 AMS 7051 II SW-SERIES V882

SEP 0 7 1976