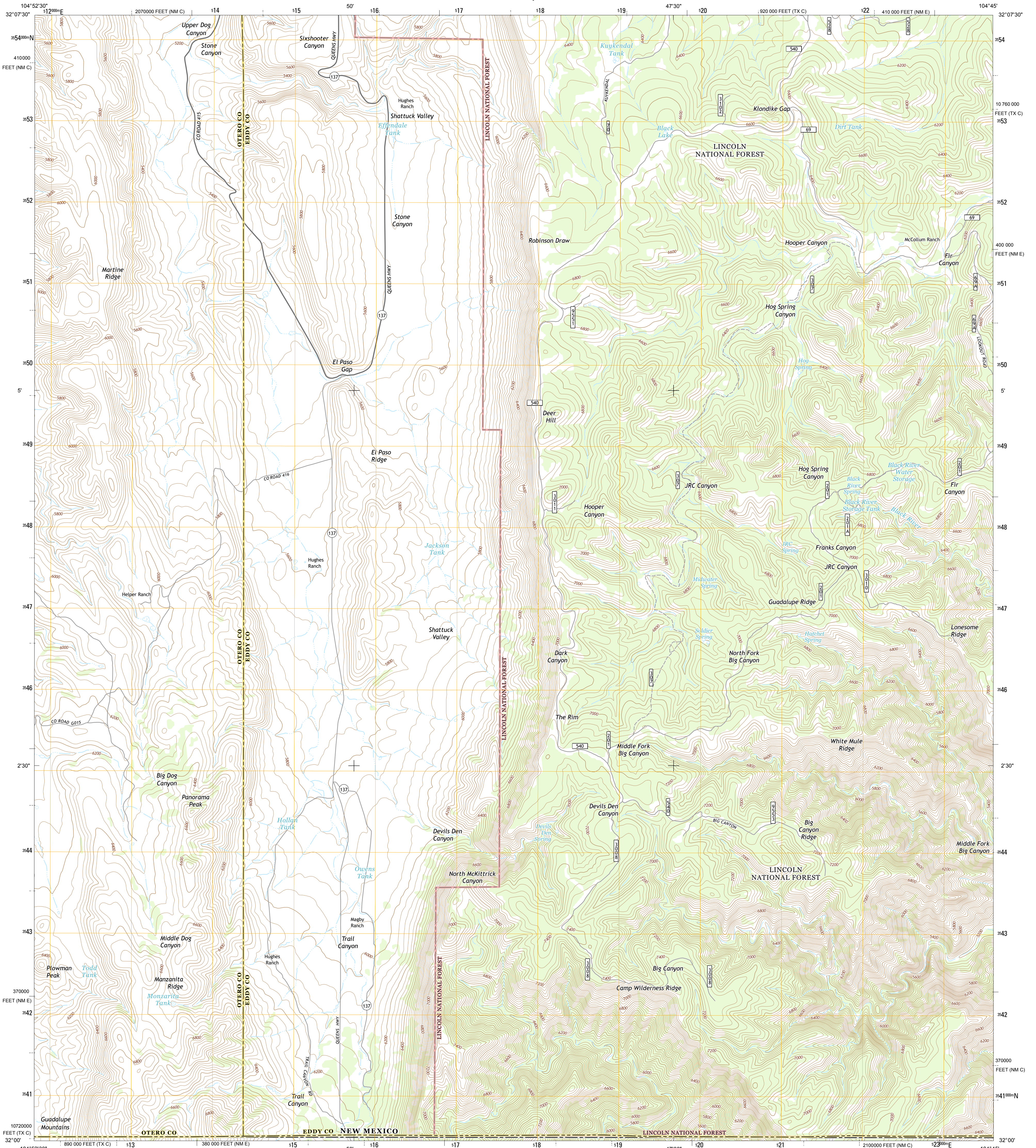




U.S. DEPARTMENT OF THE INTERIOR
U. S. GEOLOGICAL SURVEY



EL PASO GAP QUADRANGLE
NEW MEXICO-Texas
7.5-MINUTE SERIES

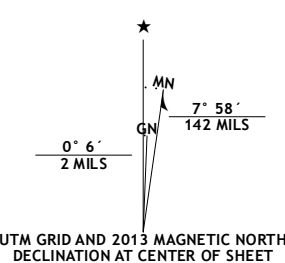


Produced by the United States Geological Survey

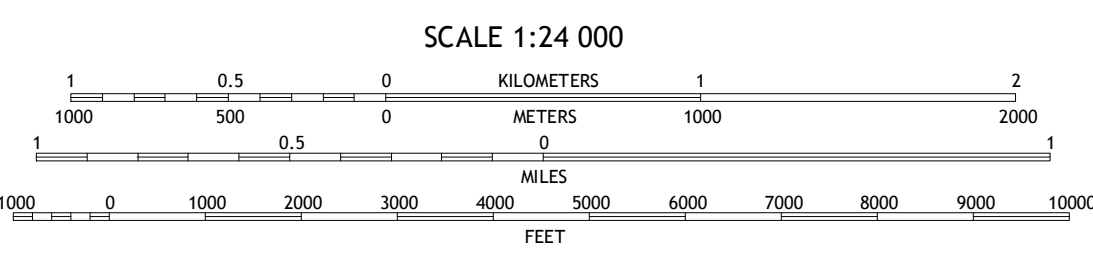
North American Datum of 1983 (NAD83)
World Geodetic System of 1984 (WGS84). Projection and
1 000-meter grid: Universal Transverse Mercator, Zone 13S
10 000-foot ticks: New Mexico Coordinate System of 1983 (east
and central zones), Texas Coordinate System of 1983 (central
zone)

This map is not a legal document. Boundaries may be
generalized for this map scale. Private lands within government
reservations may not be shown. Obtain permission before

Imagery.....NAIP, May 2011
Roads.....©2006-2013 TomTom
Roads within US Forest Service Lands.....FS Topo Data
with limited Forest Service updates, 2013
Names.....GNIS, 2013
Hydrography.....National Hydrography Dataset, 2011
Contours.....National Elevation Dataset, 2002
Boundaries.....Census, IBWC, IBC, USGS, 1972 - 2012
Public Land Survey System.....BLM, 2011

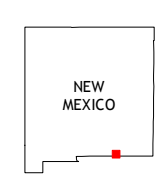


U.S. National Grid	100,000-m Square ID
ER	
Grid Zone Designation	13S



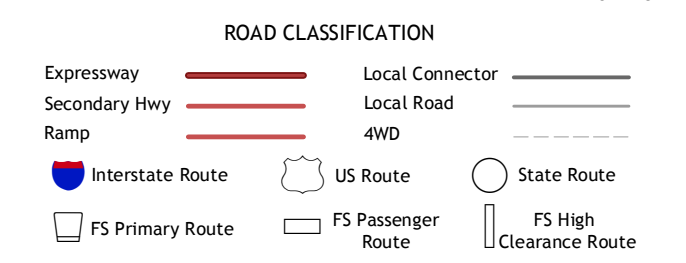
CONTOUR INTERVAL 40 FEET
NORTH AMERICAN VERTICAL DATUM OF 1988

This map was produced to conform with the
National Geospatial Program US Topo Product Standard, 2011.
A metadata file associated with this product is draft version 0.6.15



QUADRANGLE LOCATION

La Paloma Canyon	Pickett Hill	Queen
Panther Canyon	El Paso Gap	Gunsight Canyon
P X Flat	Guadalupe Peak	Independence Spring



Check with local Forest Service unit
for current travel conditions and restrictions.

EL PASO GAP, NM-TX
2013

ADJOINING 7.5 QUADRANGLES