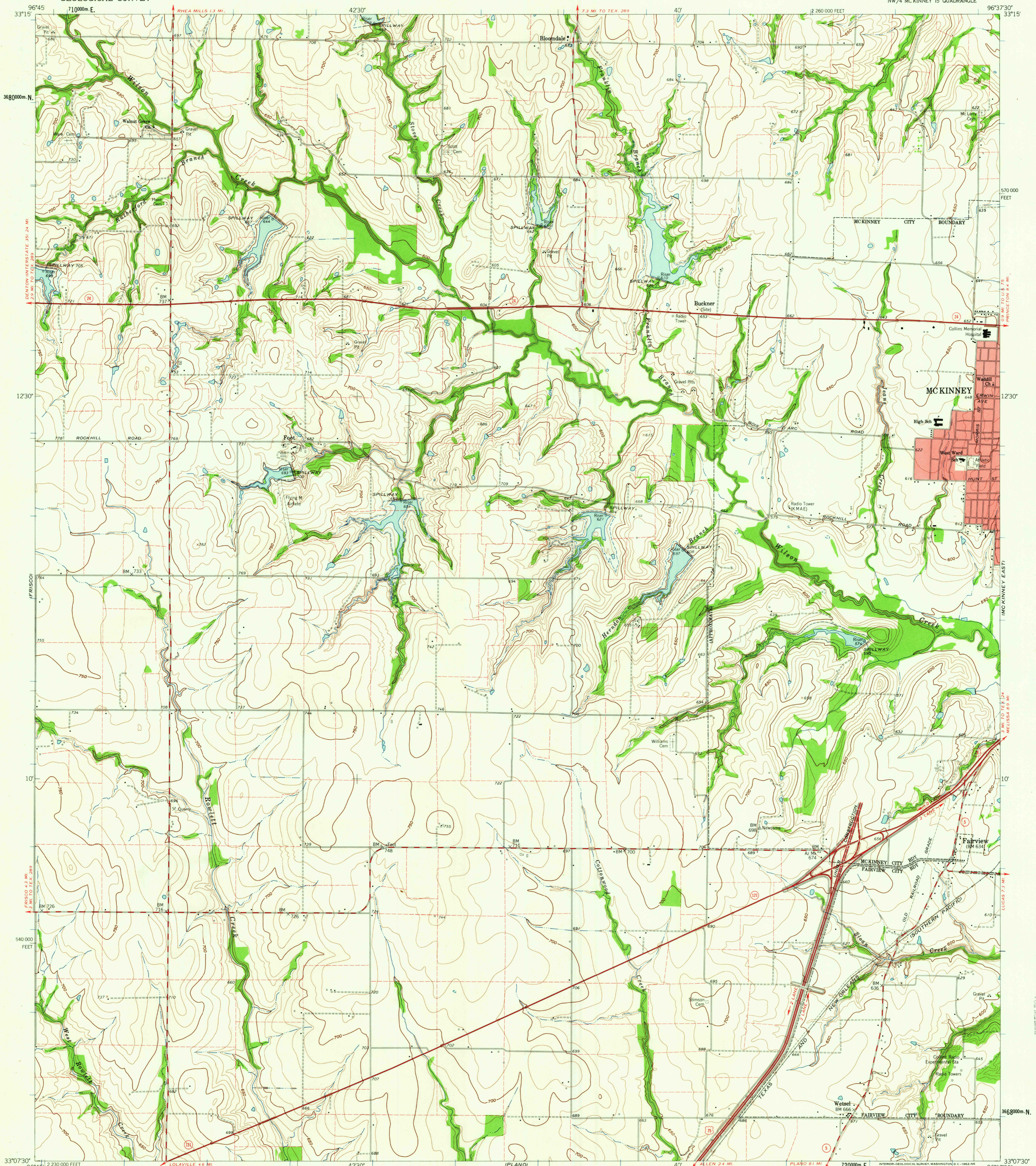


UNITED STATES
DEPARTMENT OF THE INTERIOR
GEOLOGICAL SURVEY

MC KINNEY WEST QUADRANGLE
TEXAS-COLLIN CO.
7.5 MINUTE SERIES (TOPOGRAPHIC)
NW/4 MC KINNEY 15 QUADRANGLE



Mapped, edited, and published by the Geological Survey

Control by USGS and USC&GS

Topography from aerial photographs by photogrammetric methods
Aerial photographs taken 1957. Field check 1960

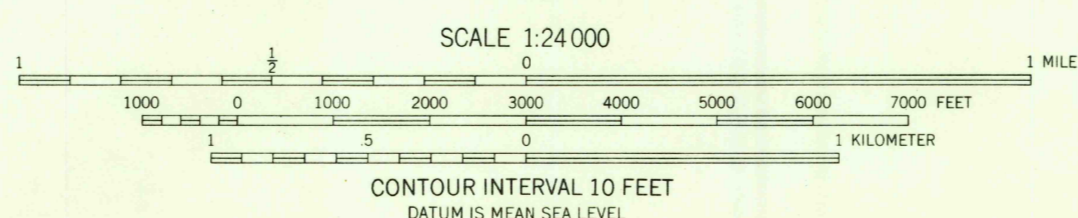
Polyconic projection. 1927 North American datum
10,000-foot grid based on Texas coordinate system,
north central zone

1000-meter Universal Transverse Mercator grid ticks,
zone 14, shown in blue

Fine red dashed lines indicate selected fence and field lines
where generally visible on aerial photographs
This information is unchecked

Red tint indicates area in which only landmark buildings are shown
Areas covered by dashed light-blue pattern are subject
to controlled inundation

TRUE NORTH
MAGNETIC NORTH
APPROXIMATE MEAN
DECLINATION, 1960



ROAD CLASSIFICATION

- Heavy-duty ——— Light-duty ———
- Medium-duty ——— Unimproved dirt ———
- U.S. Route ——— State Route ———



MC KINNEY WEST, TEX.
NW/4 MC KINNEY 15 QUADRANGLE
N33075-W96375/7.5'

1960
FILE COPY
TOPOGRAPHIC DIVISION
MAY - 2 1962

RETURN TO:
USGS AND HISTORICAL MAP ARCHIVES