

DEPARTMENT OF THE INTERIOR
U. S. GEOLOGICAL SURVEY

487-S-111-E/2-NE/4
STATE OF TEXAS
BOARD OF WATER ENGINEERS
JOHN A. NORRIS, CHAIRMAN
C. S. CLARK, A. H. DUNLAP

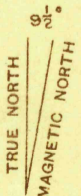
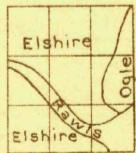
TEXAS
GRANBURY 4-a QUADRANGLE

Advance sheet
Subject to correction

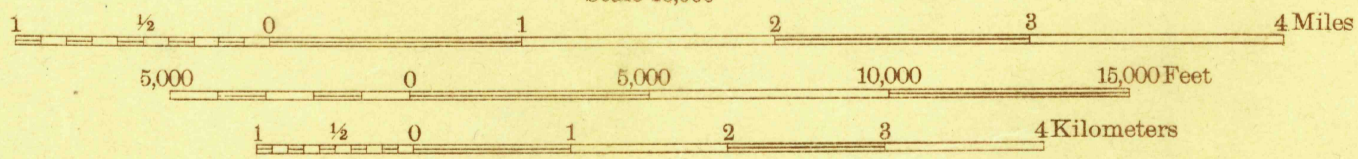


Topography by A. J. Ogle, J. M. Rawls, and
Elmer Elishire
Surveyed in 1924

Polyconic projection. North American datum
5000 yard grid based upon U. S. zone system, D

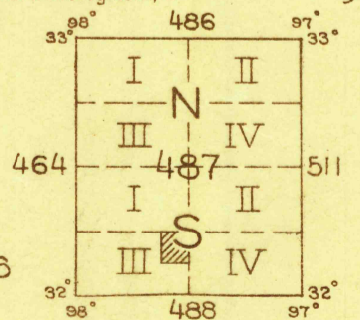


APPROXIMATE MEAN
DECLINATION, 1924

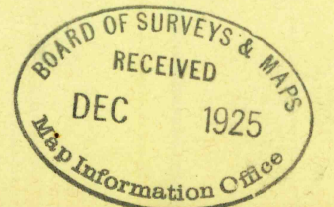


Contour interval 20 feet
10 foot contours in dashed lines
Datum is mean sea level

GRANBURY 4-a, TEXAS



Board of Surveys & Maps
FILE COPY
Map Information Office



RETURN TO:
USGS AND HISTORICAL MAP ARCHIVES