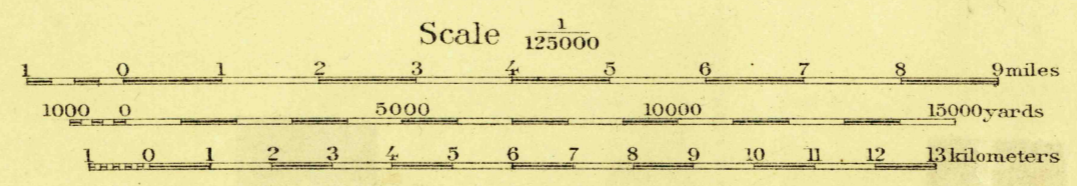


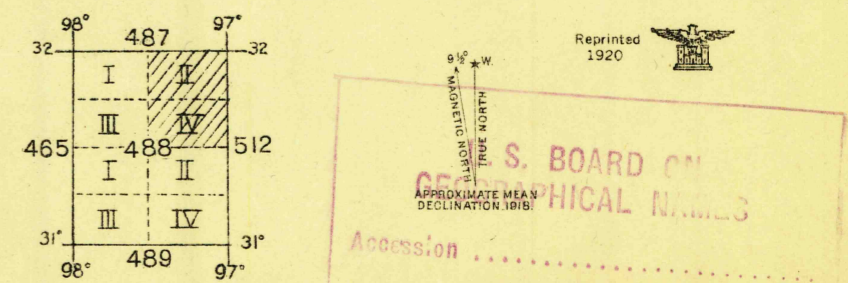
ADVANCE SHEET 488 N. II & IV



Field work and compilation under the direction of
Colonel W.P. Stokely, Corps of Engineers, U.S.A.
Department Engineer, Southern Department
Sept. 1918
Base map from U.S.G.S. engraving
Corrections and additions by Department Engineers, Southern Department



NOTE: OFFICERS USING THIS MAP WILL MARK HEREON CORRECTIONS AND ADDITIONS WHICH COME TO THEIR ATTENTION AND MAIL DIRECT TO "THE CHIEF OF ENGINEERS, WASHINGTON, D.C."



U.S. BOARD OF GEOGRAPHICAL NAMES
Accession
Class 630 CR 1920
WACO TEX.