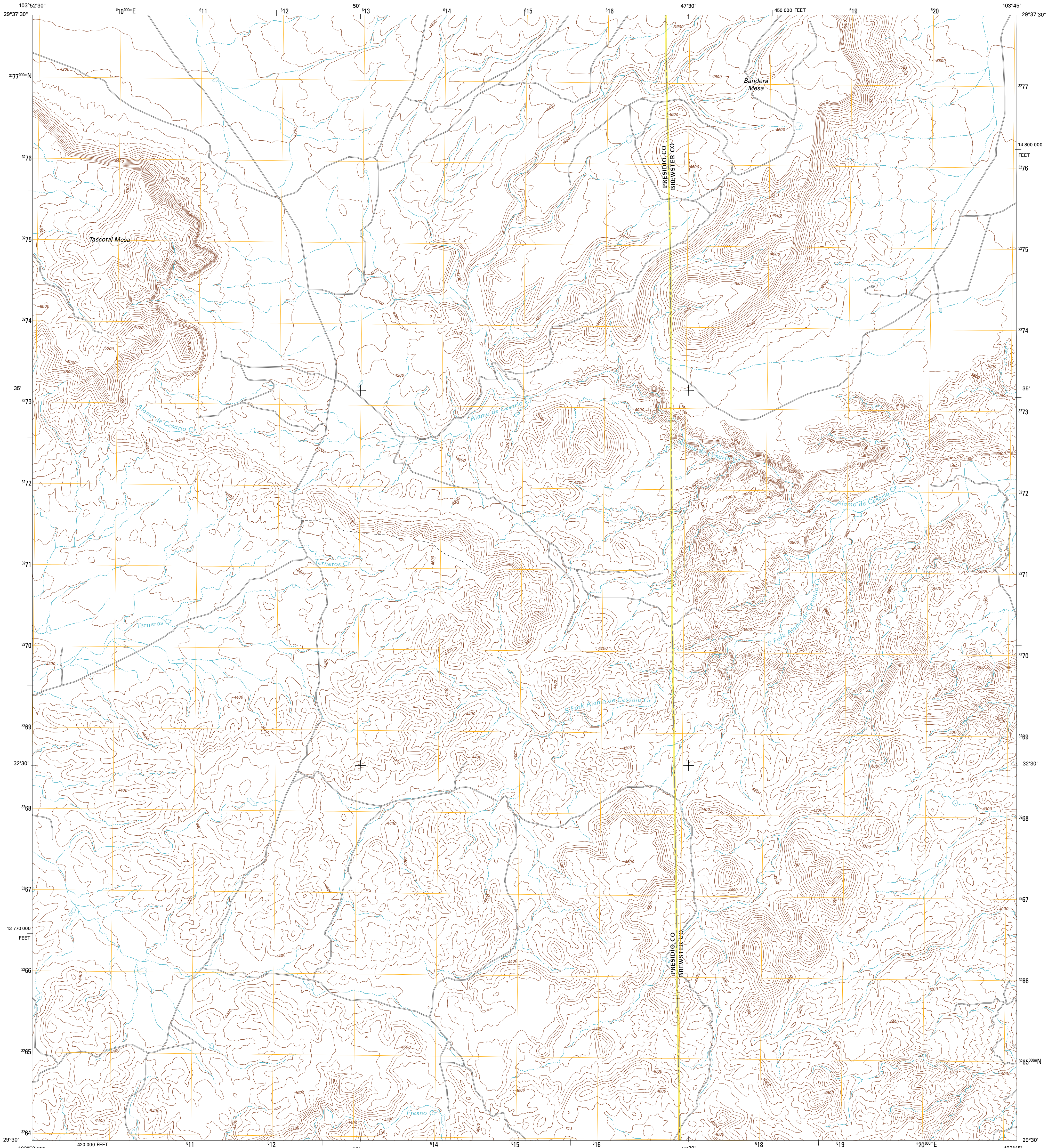




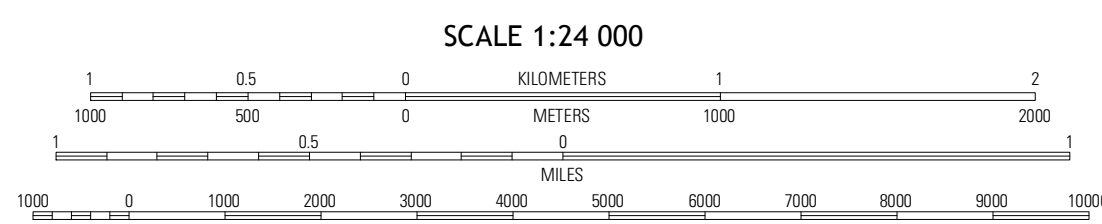
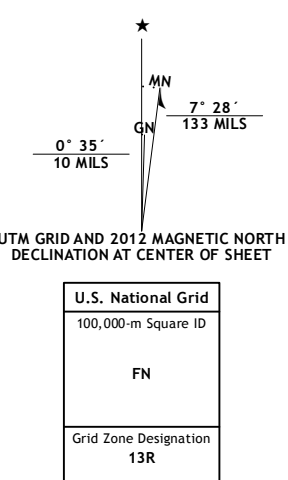
U.S. DEPARTMENT OF THE INTERIOR  
U. S. GEOLOGICAL SURVEY



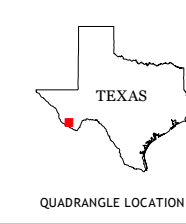
BANDERA MESA SOUTH QUADRANGLE  
TEXAS  
7.5-MINUTE SERIES



Produced by the United States Geological Survey  
North American Datum of 1983 (NAD83)  
World Geodetic System of 1984 (WGS84). Projection and  
1 000-meter grid: Universal Transverse Mercator, Zone 13R  
10 000-foot ticks: Texas Coordinate System of 1983 (south  
central zone)

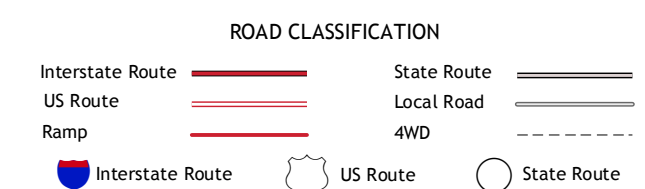


CONTOUR INTERVAL 40 FEET  
NORTH AMERICAN VERTICAL DATUM OF 1988  
This map was produced to conform with the  
National Geospatial Program US Topo Product Standard, 2011.  
A metadata file associated with this product is draft version 0.6.7



QUADRANGLE LOCATION

Horseshoe Mountains	Bandera Mesa North	Long Hills
La Mota Mountain	Bandera Mesa South	Agua Fria Mountain
Sanada Ranch	The Solitario	Yellow Hill



BANDERA MESA SOUTH, TX  
2012

ADJOINING 7.5 QUADRANGLES