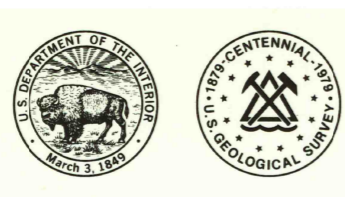


6648 1/2 SE
IF CORRECTED

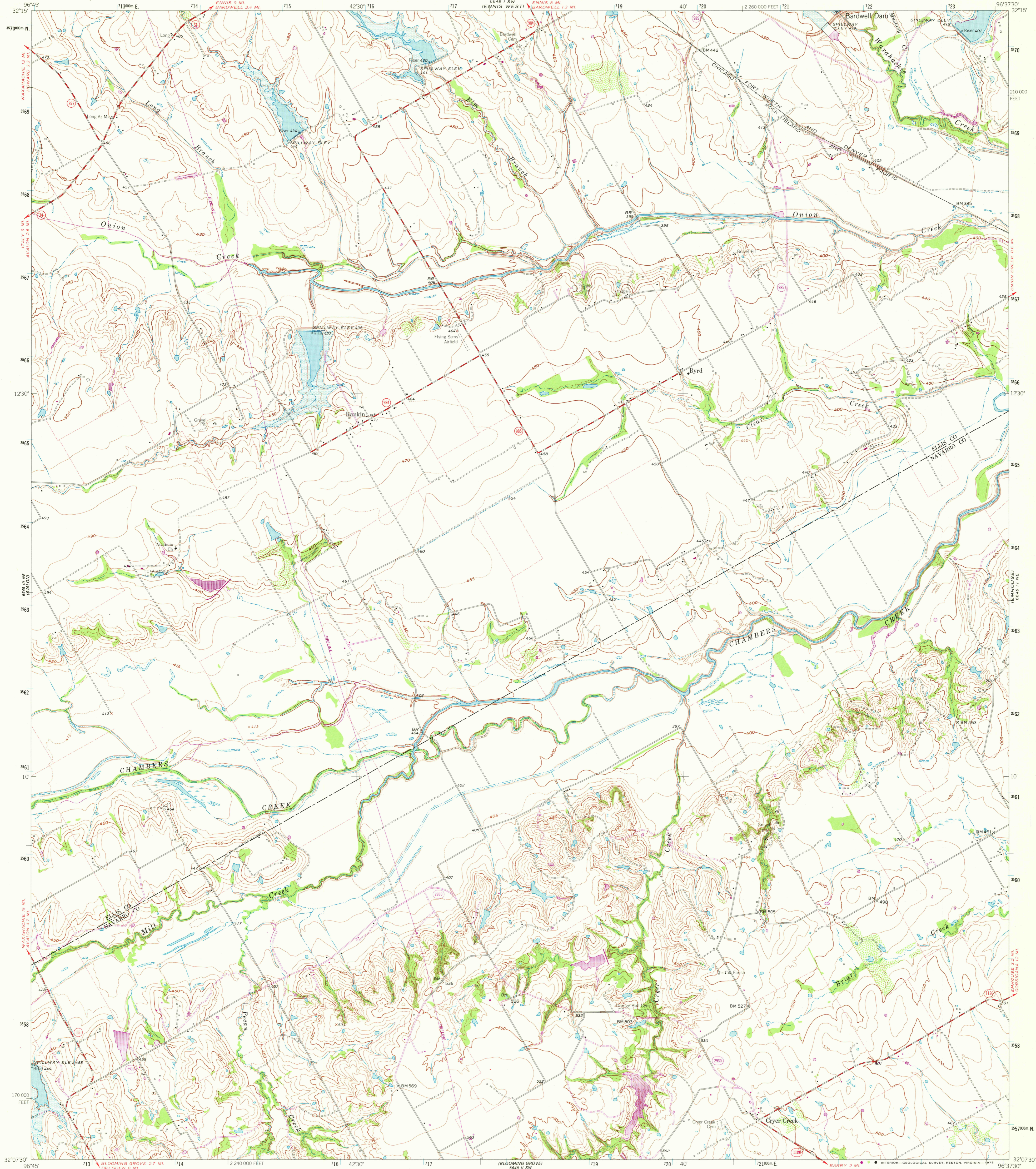
UNITED STATES
DEPARTMENT OF THE INTERIOR
GEOLOGICAL SURVEY



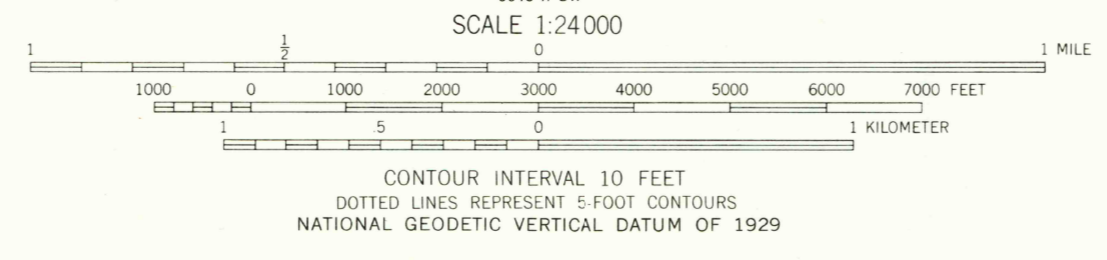
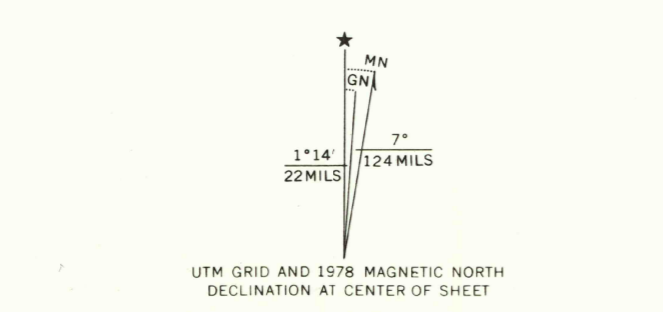
STATE OF TEXAS
TEXAS WATER COMMISSION

CRYER CREEK QUADRANGLE
TEXAS
7.5 MINUTE SERIES (TOPOGRAPHIC)

6648 1/2 SE
ENNIS EAST



Mapped, edited, and published by the Geological Survey
Control by USGS and USC&GS
Topography by photogrammetric methods from aerial photographs taken 1960. Field checked 1962.
Polyconic projection. 1927 North American datum. 10,000-foot grid based on Texas coordinate system, north central zone. 1000-meter Universal Transverse Mercator grid ticks, zone 14, shown in blue.
Fine red dashed lines indicate selected fence lines.
Areas covered by dashed light blue pattern are subject to controlled inundation.
Revision shown in purple and woodland compiled from aerial photographs taken 1976 and other source data. This information not field checked. Map edited 1978.



ROAD CLASSIFICATION
Medium-duty ——— Light-duty ———
Unimproved dirt - - - - -
State Route ○

USGS
Historical File
Topographic Division

CRYER CREEK, TEX.
N3207.5-W9637.5/7.5
1962
PHOTOREVISED 1978
AMS 6648 1/2 NW-SERIES V882

APR 10 1978

THIS MAP COMPLIES WITH NATIONAL MAP ACCURACY STANDARDS
FOR SALE BY U. S. GEOLOGICAL SURVEY, DENVER, COLORADO 80225, OR RESTON, VIRGINIA 22092
A FOLDER DESCRIBING TOPOGRAPHIC MAPS AND SYMBOLS IS AVAILABLE ON REQUEST

3296-213

2300