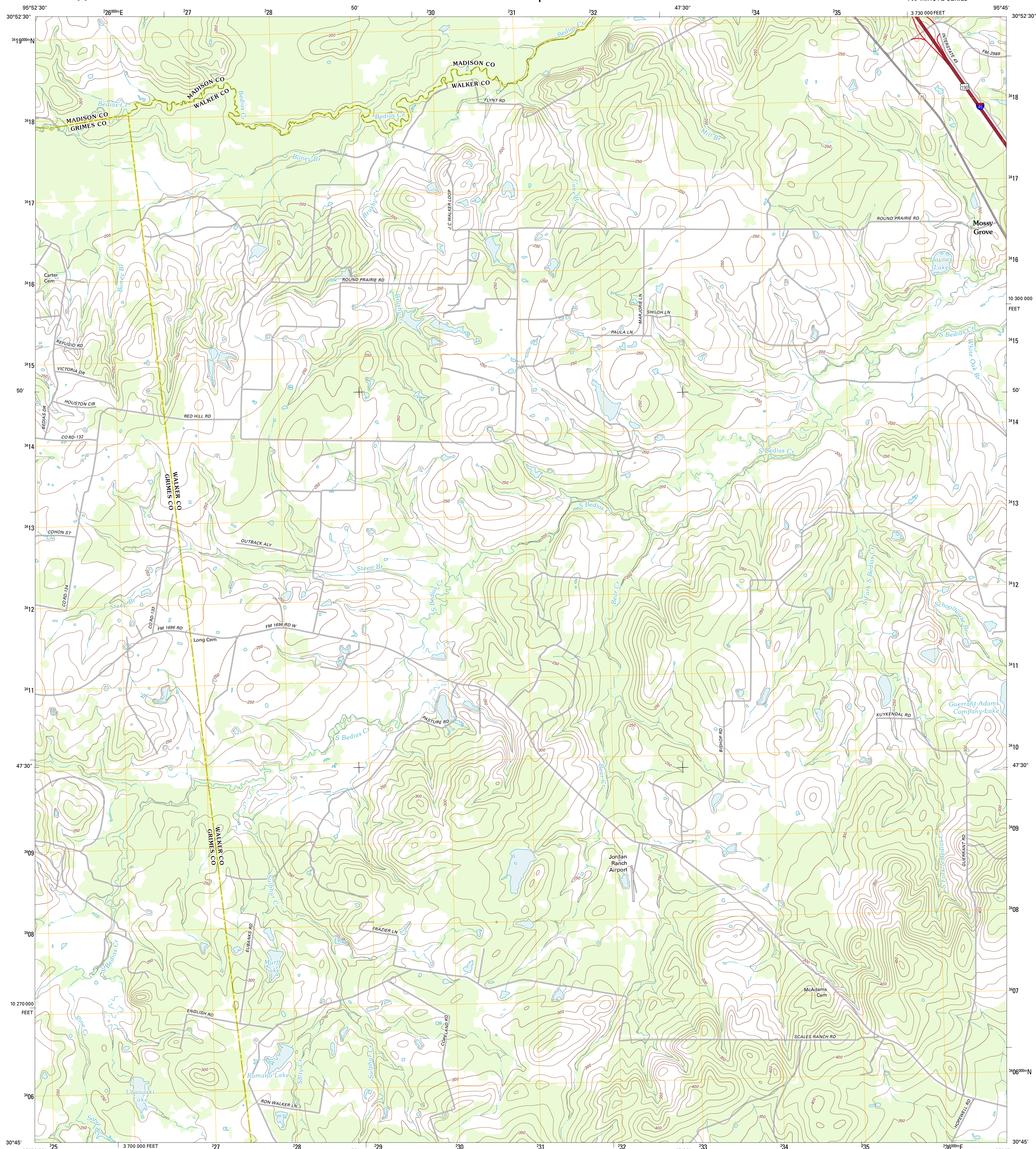




U.S. DEPARTMENT OF THE INTERIOR
U. S. GEOLOGICAL SURVEY

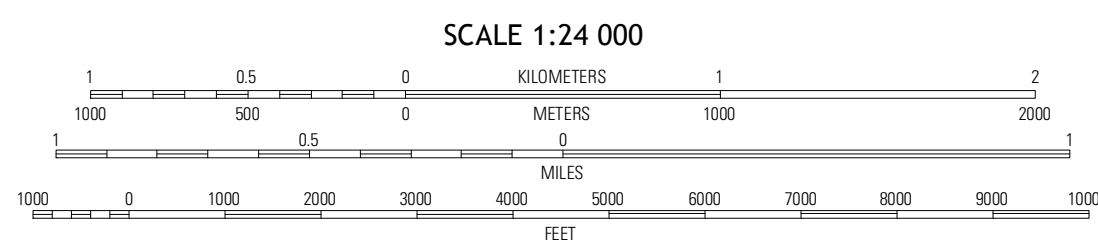
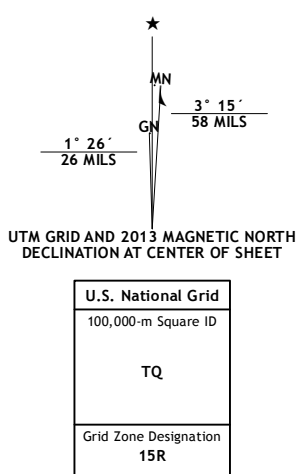


STEEP BRANCH QUADRANGLE
TEXAS
7.5-MINUTE SERIES



Produced by the United States Geological Survey
North American Datum of 1983 (NAD83)
World Geodetic System of 1984 (WGS84). Projection and
1,000-meter grid: Universal Transverse Mercator, Zone 15R
10,000-foot ticks: Texas Coordinate System of 1983 (central
zone)

Imagery.....NAP, May 2010 - August 2010
Roads.....©2006-2012 TomTom
Names.....©2006-2012 TomTom
Hydrography.....National Hydrography Dataset, 2010
Contours.....National Elevation Dataset, 2003
Boundaries.....Census, IBWC, IBC, USGS, 1972 - 2012



CONTOUR INTERVAL 10 FEET
NORTH AMERICAN VERTICAL DATUM OF 1988

This map was produced to conform with the
National Geospatial Program US Topo Product Standards, 2011.
A metadata file associated with this product is draft version 0.6.7



QUADRANGLE LOCATION

Madisonville	Connor	Baker Lake
Bedias	Steep Branch	Crabbs Prairie
Singleton	Loma	Galliee

ROAD CLASSIFICATION

Interstate Route
US Route
Ramp

State Route
Local Road
4WD

STEEP BRANCH, TX
2013

ADJOINING 7.5 QUADRANGLES