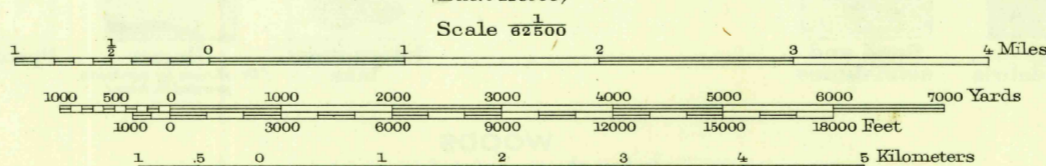
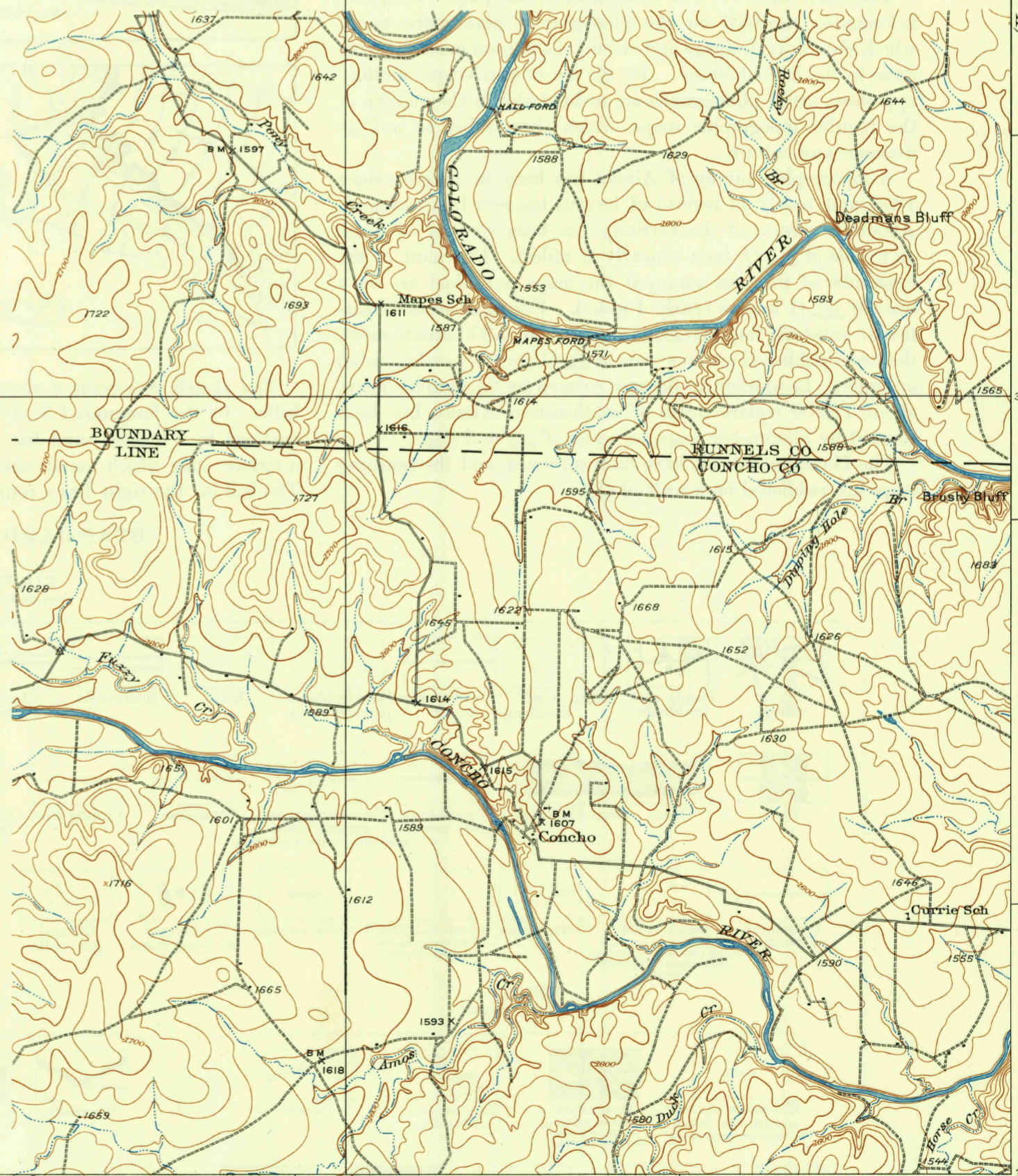


THIS AREA IS SHOWN ON THE MAP OF BALLINGER  
QUADRANGLE, SURVEYED IN 1890, SCALE 1:125,000



Polyconic projection, North American datum  
5000 yard grid based upon U.S. zone system, D

Topography by W.L. Miller, J.H. Wilke,  
T.F. Murphy and C.C. Holden  
Culture and drainage in part compiled from aerial photographs  
taken by Air Corps, U.S. Army  
Control by U.S. Geological Survey  
Surveyed in 1921 and 1924-1925

TRUE NORTH  
MAGNETIC NORTH  
APPROXIMATE MEAN  
DECLINATION, 1925

PAINT ROCK, TEX.  
Edition of 1932  
reprinted 1949  
N 3130-W 9945/15

U. S. G. S.  
FILE COPY  
Inspection and Editing.

MAY 3 1949 2160

U. S. G. S.  
FILE COPY  
Inspection and Editing.

U. S. G. S.  
FILE COPY  
Inspection and Editing.

RETURN TO:  
USGS AND HISTORICAL MAP ARCHIVES