

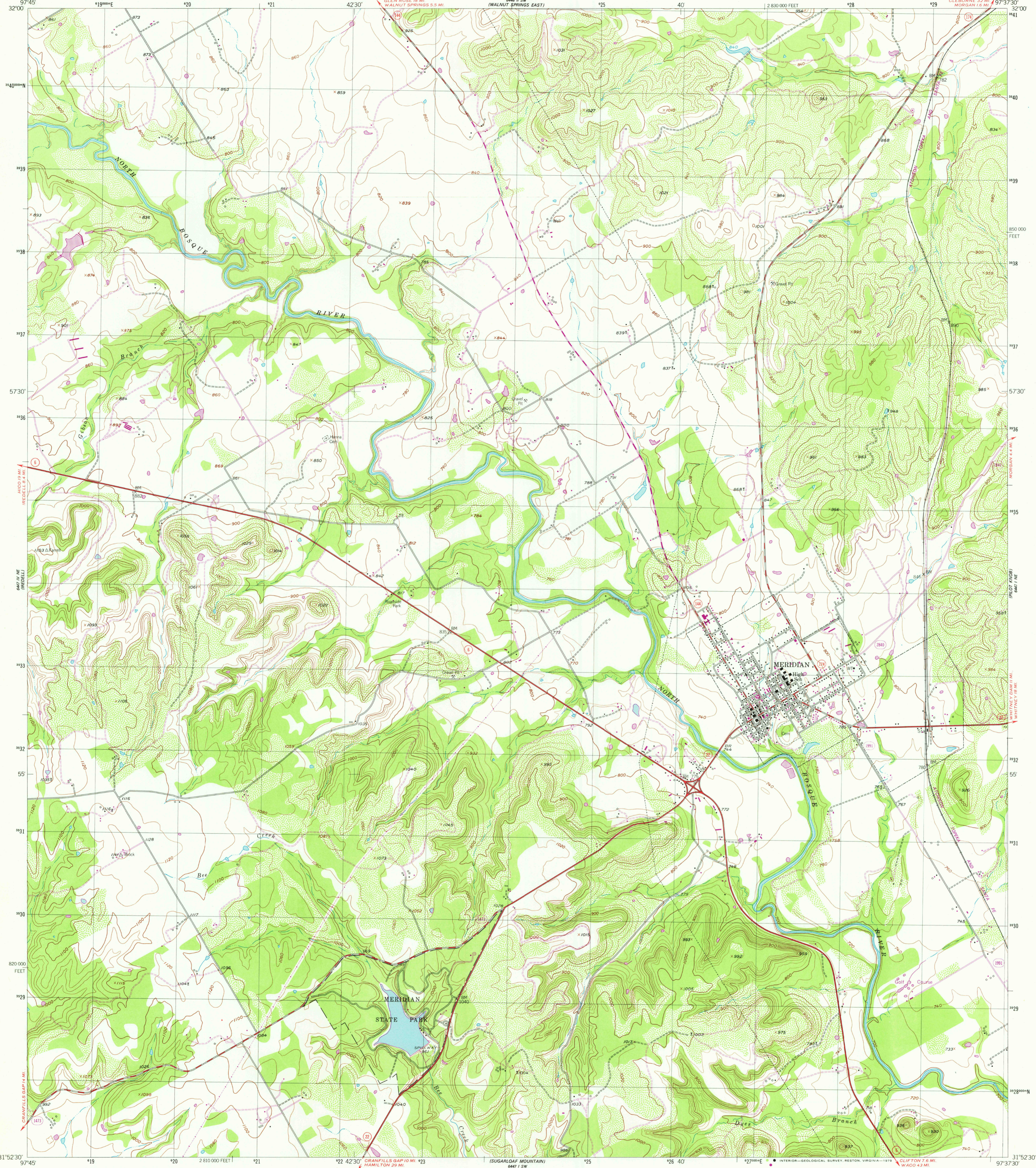
6447 I NW
MERRIDIAN

UNITED STATES
DEPARTMENT OF THE INTERIOR
GEOLOGICAL SURVEY

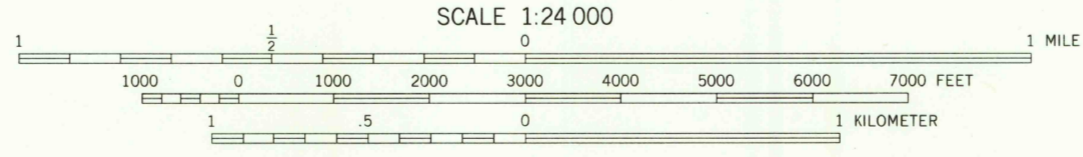
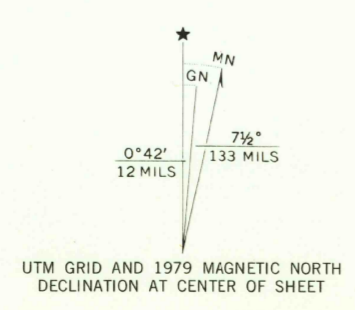


MERIDIAN QUADRANGLE
TEXAS-BOSQUE CO
7.5 MINUTE SERIES (TOPOGRAPHIC)
NW 1/4 CLIFTON 15' QUADRANGLE

6447 I SE
MERRIDIAN



Maped, edited, and published by the Geological Survey
Control by USGS and USC&GS
Topography from aerial photographs by ER-55 plotter
Aerial photographs taken 1955. Field check 1955
Polyconic projection. 1927 North American datum
10,000-foot grid based on Texas coordinate system,
central zone
1000-meter Universal Transverse Mercator grid, zone 14
There may be private inholdings within the boundaries of the
National or State reservations shown on this map
Unchecked elevations are shown in brown
Revisions shown in purple and woodland compiled from
aerial photographs taken 1976 and other source data
This information not field checked. Map edited 1979



CONTOUR INTERVAL 20 FEET
NATIONAL GEODETIC VERTICAL DATUM OF 1929

THIS MAP COMPLIES WITH NATIONAL MAP ACCURACY STANDARDS
FOR SALE BY U. S. GEOLOGICAL SURVEY, DENVER, COLORADO 80225 OR RESTON, VIRGINIA 22092
A FOLDER DESCRIBING TOPOGRAPHIC MAPS AND SYMBOLS IS AVAILABLE ON REQUEST



ROAD CLASSIFICATION
Heavy-duty ——— Light-duty ———
Medium-duty ——— Unimproved dirt ———
○ State Route

USGS
Historical File
Topographic Division

JUL 18 1979
MERIDIAN, TEX.
NW 1/4 CLIFTON 15' QUADRANGLE
N3152.5-W9737.5/7.5
1955
PHOTOREVISED 1979
AMS 6447 I NW-SERIES V882

3197-343

USGS AND HISTORICAL MAP ARCHIVES

1800