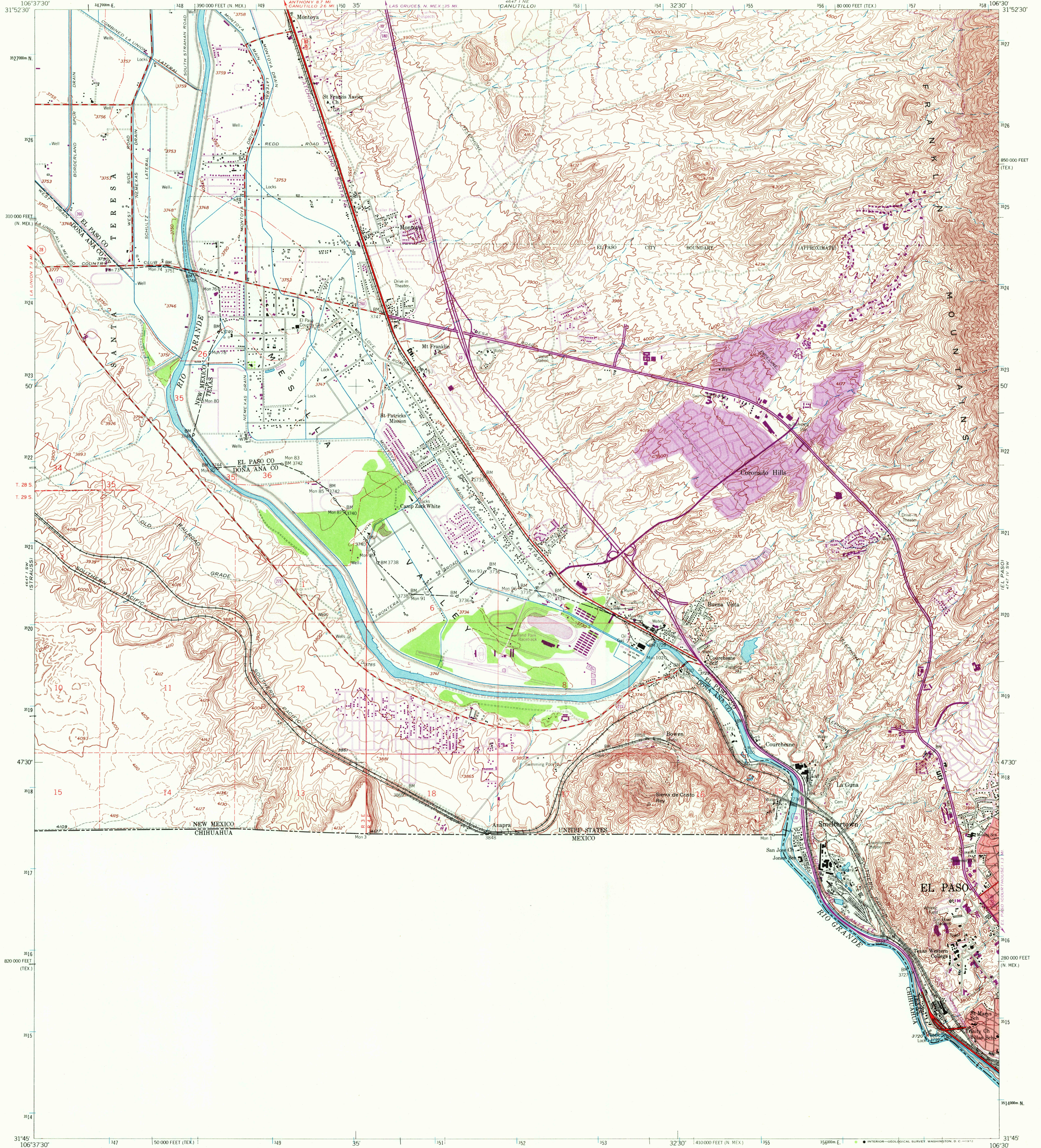


UNITED STATES  
DEPARTMENT OF THE INTERIOR  
GEOLOGICAL SURVEY

SMELTERTOWN QUADRANGLE  
TEXAS-NEW MEXICO  
7.5 MINUTE SERIES (TOPOGRAPHIC)  
SE/4 CANUTILLO 15 QUADRANGLE



Mapped by the Army Map Service  
Published for civil use by the Geological Survey  
Control by USGS, USC&GS, and USCE

Topography from aerial photographs by photogrammetric methods  
Aerial photographs taken 1954. Photography field annotated 1955

Polyconic projection. 1927 North American datum  
10,000-foot grid based on Texas coordinate system, central zone and New Mexico coordinate system, central zone  
1000-meter Universal Transverse Mercator grid ticks, zone 13, shown in blue

Red tint indicates areas in which only landmark buildings are shown  
Revisions shown in purple compiled by the Geological Survey from aerial photographs taken 1967. This information not field checked  
Purple tint indicates extension of urban areas

UTM GRID AND 1967 MAGNETIC NORTH DECLINATION AT CENTER OF SHEET

SCALE 1:24,000

CONTOUR INTERVAL 20 FEET  
DASHED LINES REPRESENT 5 AND 10 FOOT CONTOURS  
DATUM IS MEAN SEA LEVEL

ROAD CLASSIFICATION

- Heavy-duty
- Medium-duty
- Light-duty
- Unimproved dirt

Interstate Route U.S. Route State Route

SMELTERTOWN, TEX.-N. MEX.  
SE/4 CANUTILLO 15 QUADRANGLE  
N3145-W10630/7.5  
1955  
PHOTOREVISED 1967  
AMS 4647 I SE-SERIES V882

7145  
MAR 20 1972

THIS MAP COMPLIES WITH NATIONAL MAP ACCURACY STANDARDS  
FOR SALE BY U.S. GEOLOGICAL SURVEY, DENVER, COLORADO 80225, OR WASHINGTON, D. C. 20242  
A FOLDER DESCRIBING TOPOGRAPHIC MAPS AND SYMBOLS IS AVAILABLE ON REQUEST