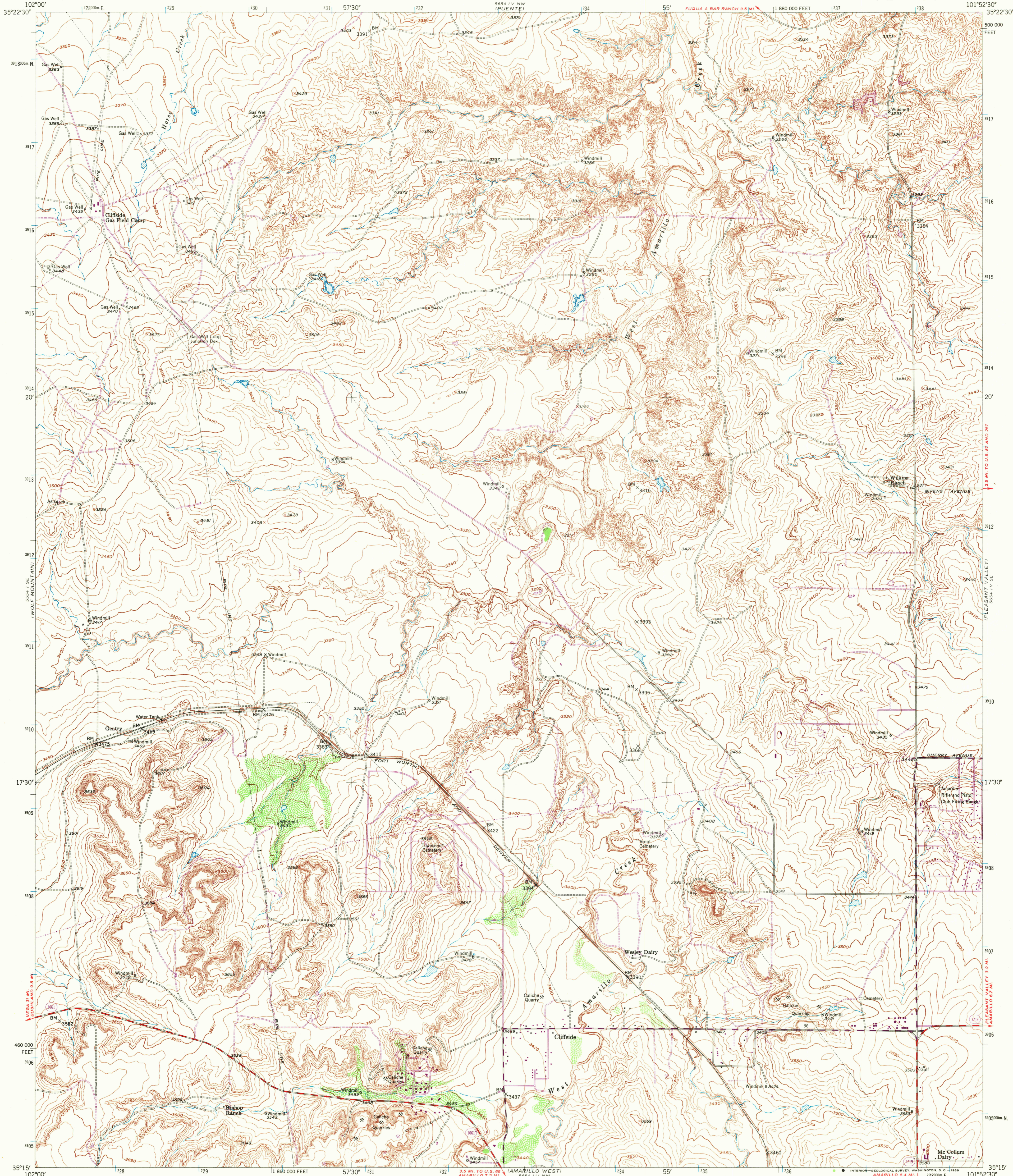
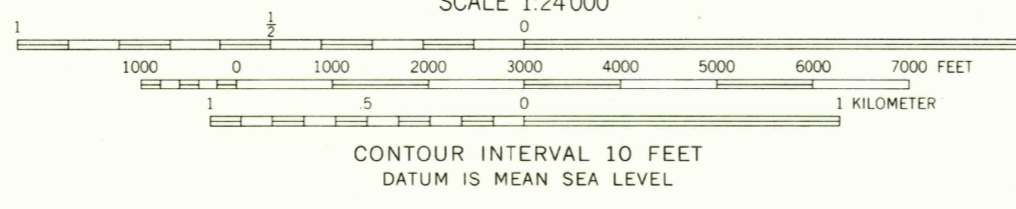
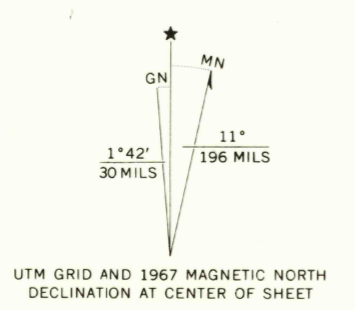


UNITED STATES  
DEPARTMENT OF THE INTERIOR  
GEOLOGICAL SURVEY

CLIFFSIDE QUADRANGLE  
TEXAS—POTTER CO.  
7.5 MINUTE SERIES (TOPOGRAPHIC)  
SW/4 CLIFFSIDE 15' QUADRANGLE



Maped, edited, and published by the Geological Survey  
Control by USGS and USC&GS  
Topography from aerial photographs by multiplex methods  
Aerial photographs taken 1951. Field check 1953  
Polyconic projection. 1927 North American datum  
10,000-foot grid based on Texas coordinate system,  
north zone  
1000 meter Universal Transverse Mercator grid ticks,  
zone 14, shown in blue  
Revisions shown in purple compiled by the Geological Survey from  
aerial photographs taken 1967. This information not field checked



THIS MAP COMPLIES WITH NATIONAL MAP ACCURACY STANDARDS  
FOR SALE BY U.S. GEOLOGICAL SURVEY, DENVER, COLORADO 80225, OR WASHINGTON, D. C. 20242  
A FOLDER DESCRIBING TOPOGRAPHIC MAPS AND SYMBOLS IS AVAILABLE ON REQUEST

ROAD CLASSIFICATION  
Medium-duty ——— Light duty ———  
Unimproved dirt - - - - -  
State Route ○



CLIFFSIDE, TEX.  
SW/4 CLIFFSIDE 15' QUADRANGLE  
N3515-W10152.5/7.5  
1953  
PHOTOREVISED 1967  
AMS 5654 1V SW—SERIES V882

2369  
FEB 20 1968