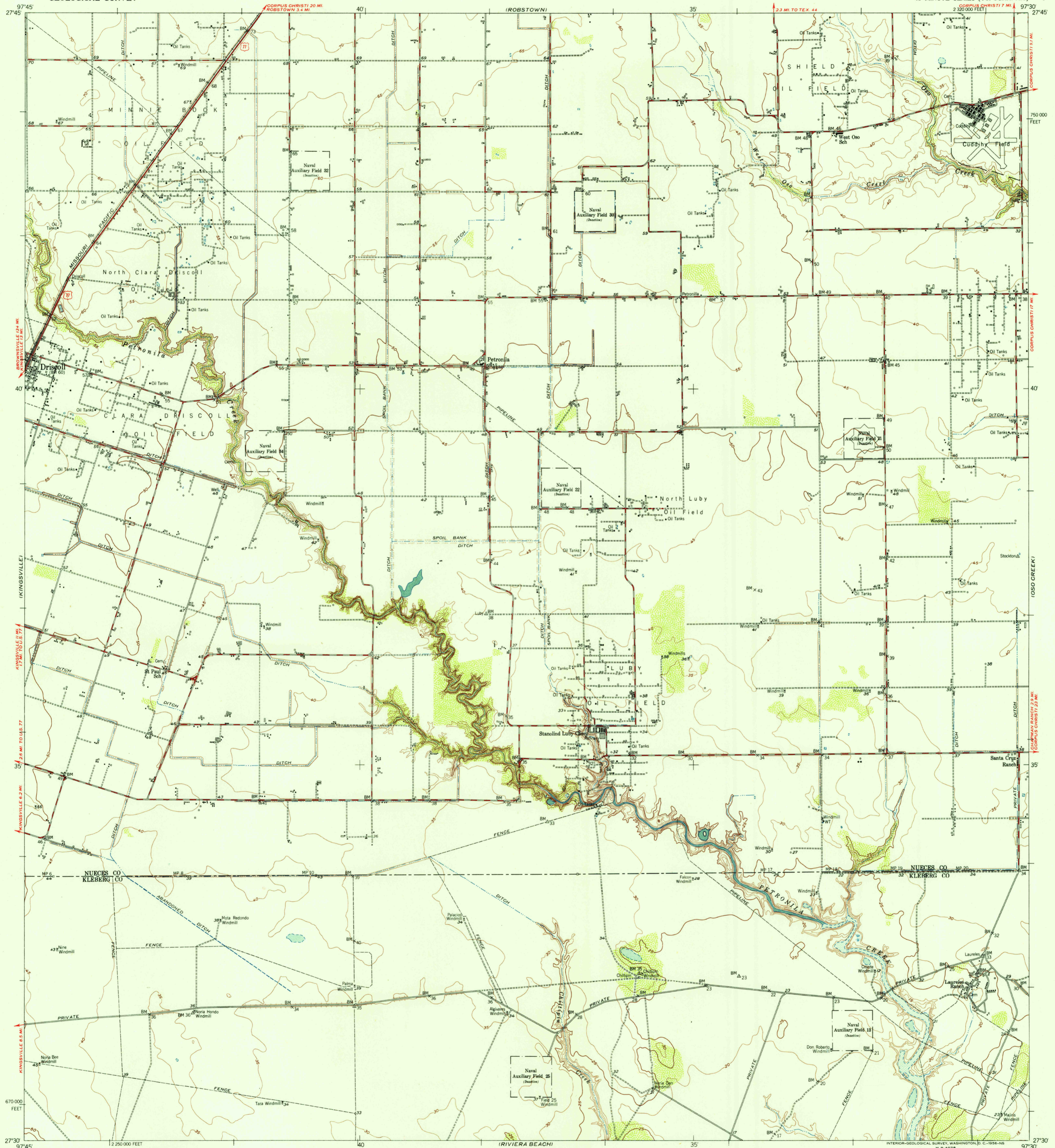


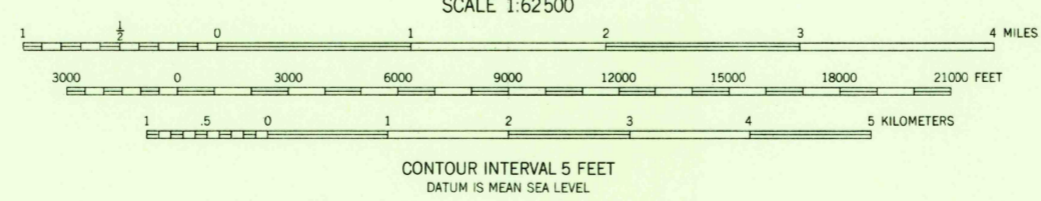
ORANGE GROVE

CORPUS CHRISTI

UNITED STATES DEPARTMENT OF THE INTERIOR GEOLOGICAL SURVEY



Maped, edited, and published by the Geological Survey Control by USGS and USC&GS Culture and drainage in part compiled from aerial photographs taken 1951-1952. Topography by planetable surveys 1954 Map originally surveyed by USGS 1923 Polyconic projection. 1927 North American datum 10,000-foot grid based on Texas coordinate system, south zone Water stages in this area vary with meteorological conditions Approximate limits of occasional inundation shown by dashed blue lines where mean high water is undetermined for lack of visual evidence



U.S.G.S. FILE COPY TOPOGRAPHIC DIVISION

ROAD CLASSIFICATION 1956
Heavy-duty, Light-duty, Medium-duty, Unimproved dirt, U.S. Route

PETRONILA, TEX. N2730-W9730/15 1954

THIS MAP COMPLIES WITH NATIONAL MAP ACCURACY STANDARDS FOR SALE BY U.S. GEOLOGICAL SURVEY, DENVER 2, COLORADO OR WASHINGTON 25, D.C. A FOLDER DESCRIBING TOPOGRAPHIC MAPS AND SYMBOLS IS AVAILABLE ON REQUEST

JAN 24 1957 2605