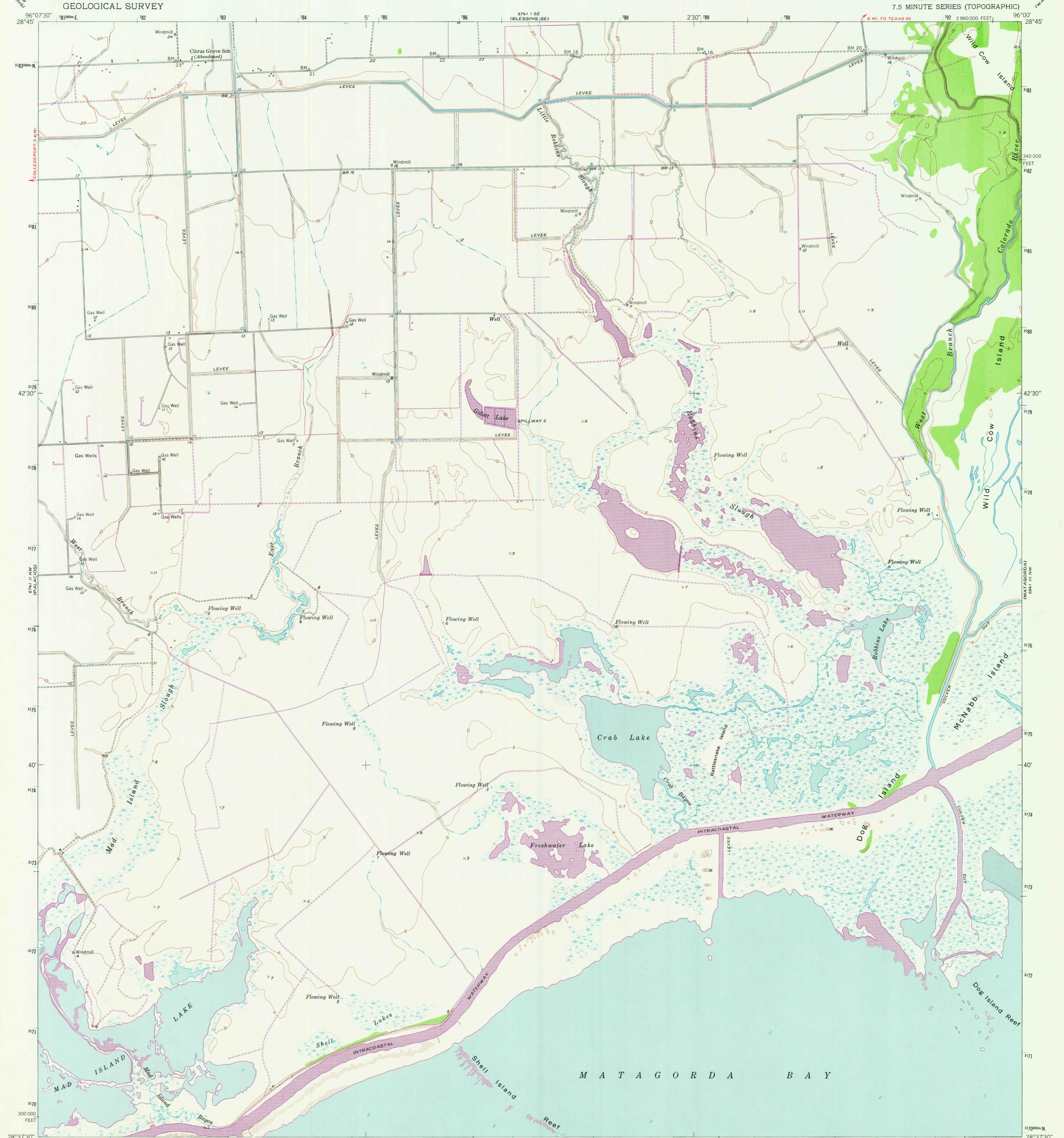
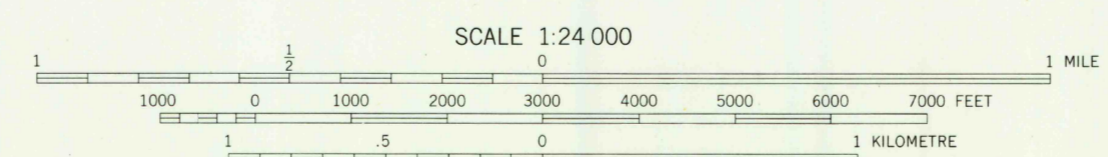
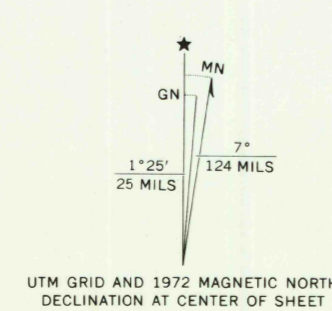


UNITED STATES  
DEPARTMENT OF THE INTERIOR  
GEOLOGICAL SURVEY

PALACIOS NE QUADRANGLE  
TEXAS-MATAGORDA CO.  
7.5 MINUTE SERIES (TOPOGRAPHIC)



Mapped, edited, and published by the Geological Survey  
Control by USGS, USC&GS, and USCE  
Culture and drainage in part compiled from aerial photographs taken 1946-1947. Topography by plane-table surveys 1951-1952 and in part by U. S. Corps of Engineers. Field check 1952  
Hydrography from USC&GS Chart 1284, 1945 (1:80 000)  
Polyconic projection. 1927 North American datum  
10,000-foot grid based on Texas coordinate system, south central zone  
1000-metre Universal Transverse Mercator grid ticks, zone 14, shown in blue  
Revisions shown in purple compiled from aerial photographs taken 1972. This information not field checked



CONTOUR INTERVAL 5 FEET  
NATIONAL GEODETIC VERTICAL DATUM OF 1929  
SOUNDINGS IN FEET-DATUM IS MEAN LOW WATER  
SHORELINE SHOWN REPRESENTS THE APPROXIMATE LINE OF MEAN HIGH WATER  
THE AVERAGE RANGE OF TIDE IS APPROXIMATELY 1 FOOT

THIS MAP COMPLIES WITH NATIONAL MAP ACCURACY STANDARDS  
FOR SALE BY U. S. GEOLOGICAL SURVEY, DENVER, COLORADO 80225, OR RESTON, VIRGINIA 22092  
A FOLDER DESCRIBING TOPOGRAPHIC MAPS AND SYMBOLS IS AVAILABLE ON REQUEST



ROAD CLASSIFICATION	
Heavy-duty	Light-duty
Medium-duty	Unimproved dirt
U. S. Route	State Route

FEB 21 1978

USGS  
Historical File  
Topographic Division

PALACIOS NE, TEX.  
N 2837.5-W 9600/7.5  
1952  
PHOTOREVISED 1972  
AMS 6741 II NE-SERIES V882

3225