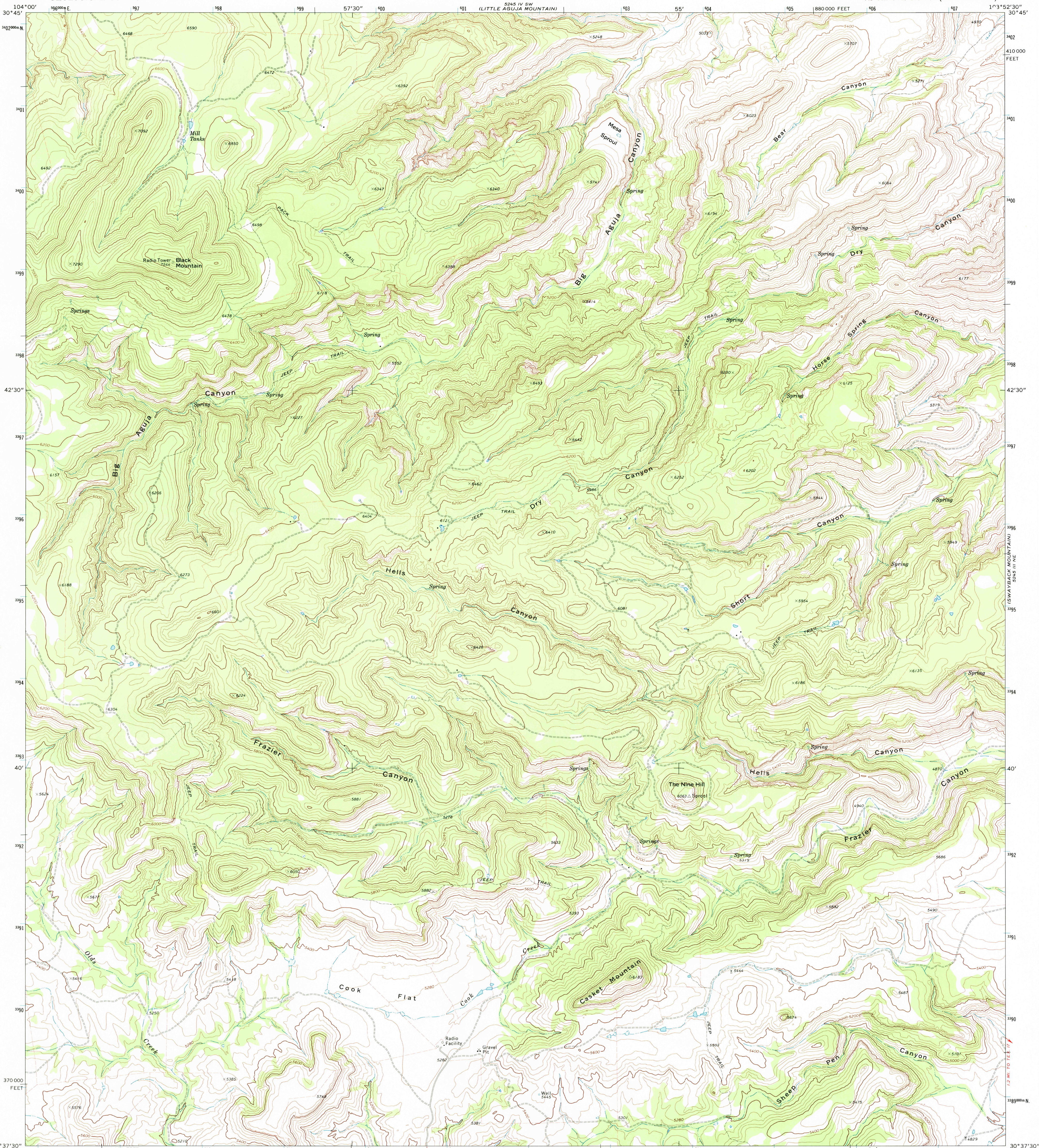


5245 III SW  
(BIG AGUJA  
MOUNTAIN)

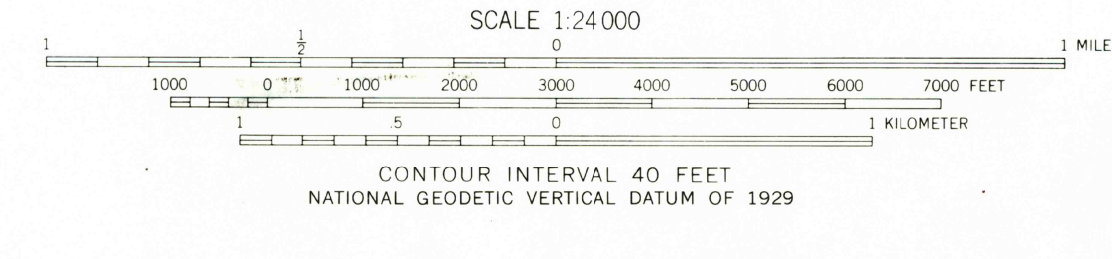
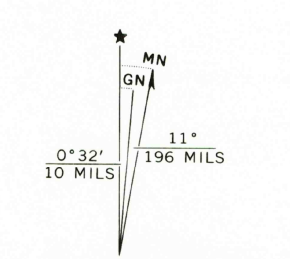


Mapped, edited, and published by the Geological Survey  
Control by USGS and USC&GS

Topography by photogrammetric methods from aerial  
photographs taken 1971. Field checked 1972

Projection and 10,000-foot grid ticks: Texas  
coordinate system, central zone (Lambert conformal conic)  
1000-meter Universal Transverse Mercator grid ticks,  
zone 13, shown in blue. 1927 North American datum  
Fine red dashed lines indicate selected fence lines

UTM GRID AND 1972 MAGNETIC NORTH  
DECLINATION AT CENTER OF SHEET



ROAD CLASSIFICATION

Primary highway, hard surface	Light-duty road, hard or improved surface
Secondary highway, hard surface	Unimproved road
Interstate Route	U.S. Route
	Slate Route

USGS Historical File Topographic Division  
CASKET MOUNTAIN, TEX.  
N 3037.5—W 10352.5/7.5  
1972

AMS 5245 III NW—SERIES V882

JAN 6 1975

3250

(FORT DAVIS SE)  
5245 III SE