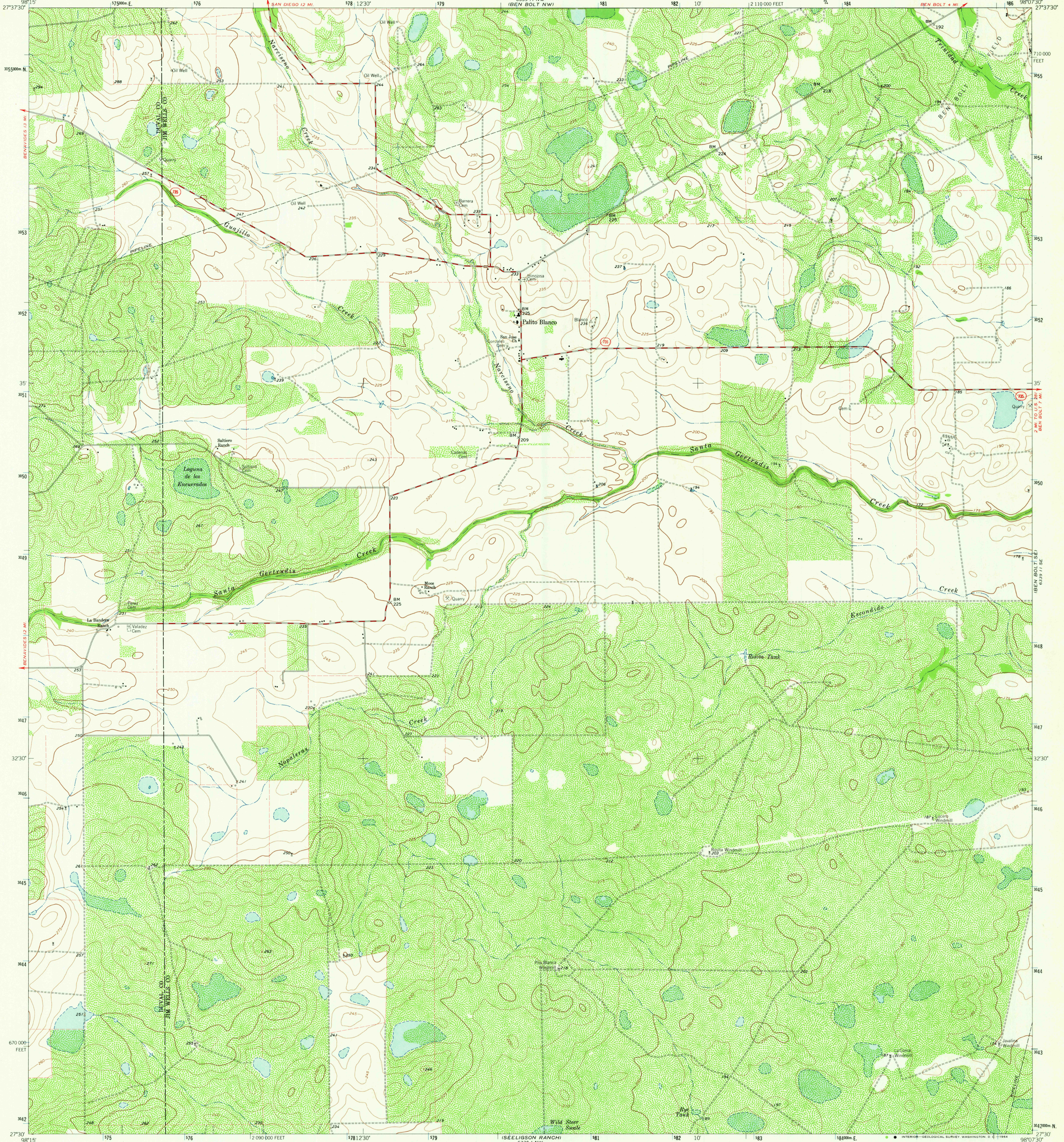
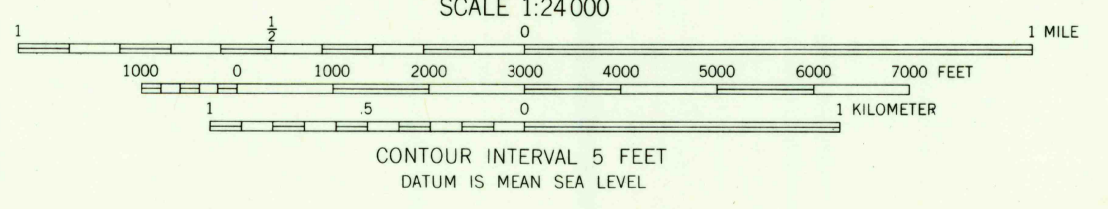
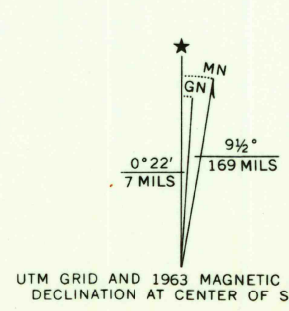


6339 11 NW
(BEN BOLT NW)
6339 11 SE
(ALICE SOUTH)



Mapped, edited, and published by the Geological Survey
Control by USGS and USC&GS
Planimetry by photogrammetric methods from aerial photographs
taken 1961. Topography by planetable surveys 1963
Polyconic projection. 1927 North American datum
10,000 foot grid based on Texas coordinate system, south zone
1000-meter Universal Transverse Mercator grid ticks,
zone 14, shown in blue
Fine red dashed lines indicate selected fence lines



ROAD CLASSIFICATION

Medium-duty	Light-duty
Unimproved dirt	
○ State Route	

THIS MAP COMPLIES WITH NATIONAL MAP ACCURACY STANDARDS
FOR SALE BY U.S. GEOLOGICAL SURVEY, DENVER 25, COLORADO OR WASHINGTON 25, D.C.
A FOLDER DESCRIBING TOPOGRAPHIC MAPS AND SYMBOLS IS AVAILABLE ON REQUEST

U.S.G.S.
FILE COPY
TOPOGRAPHIC DIVISION

PALITO BLANCO, TEX.
N2730-W9807 5,7,5
1963
AMS 6339 11 SW-SERIES V882

SEP 2 1964

2035