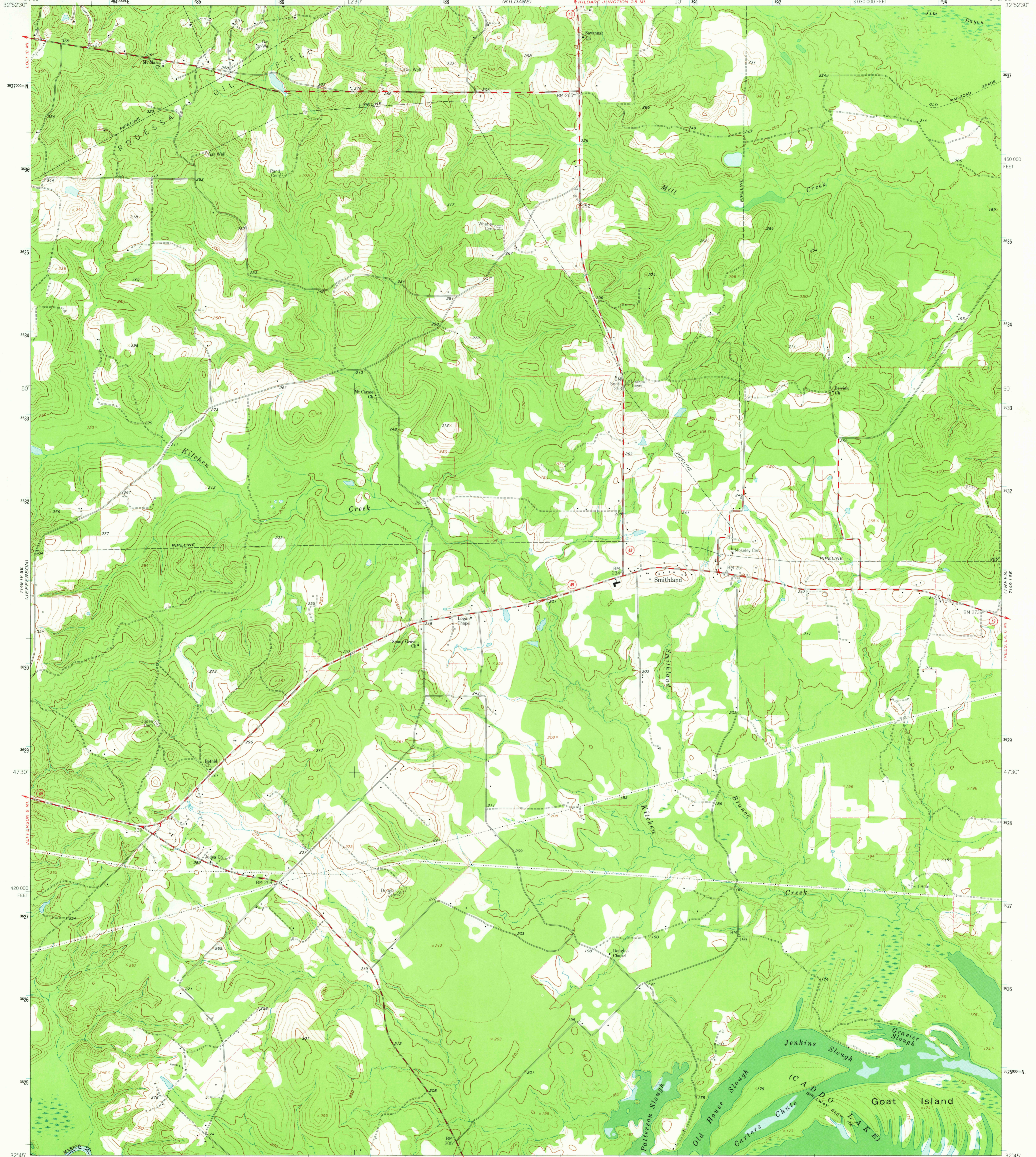


7149 I NE (LAWLER) 94°15' 32'52.30" 12300 E 185 186 1230' 188 7149 I NW (KILDARE) 10' 191 3 030 000 FEET 194 94°07'30" 32°52'30" 7149 I SE (JEFFERSON) 7149 I SE (TREES) 7149 I SE



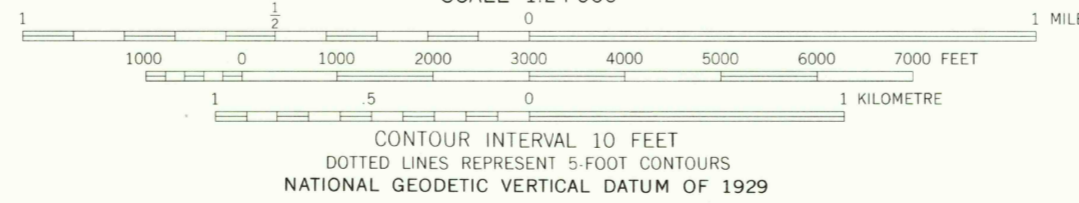
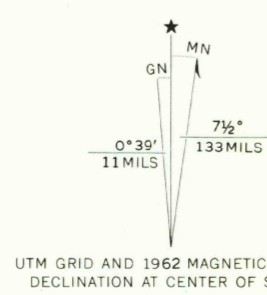
Mapped, edited, and published by the Geological Survey

Control by USGS and USC&GS

Topography by photogrammetric methods from aerial photographs taken 1958. Field checked 1962

Polyconic projection. 1927 North American datum  
10,000-foot grid based on Texas coordinate system, north central zone  
1000 metre Universal Transverse Mercator grid ticks, zone 15, shown in blue

Fine red dashed lines indicate selected fence lines



QUADRANGLE LOCATION

ROAD CLASSIFICATION	
Medium-duty	Light-duty
Unimproved dirt	Slate Route

SMITHLAND, TEX OCT 0 8 1975

N3245-W9407 5/7/5

USGS  
HISTORICAL FILE  
TOPOGRAPHIC DIVISION

1962  
AMS 7149 I SW-SERIES V882

2135