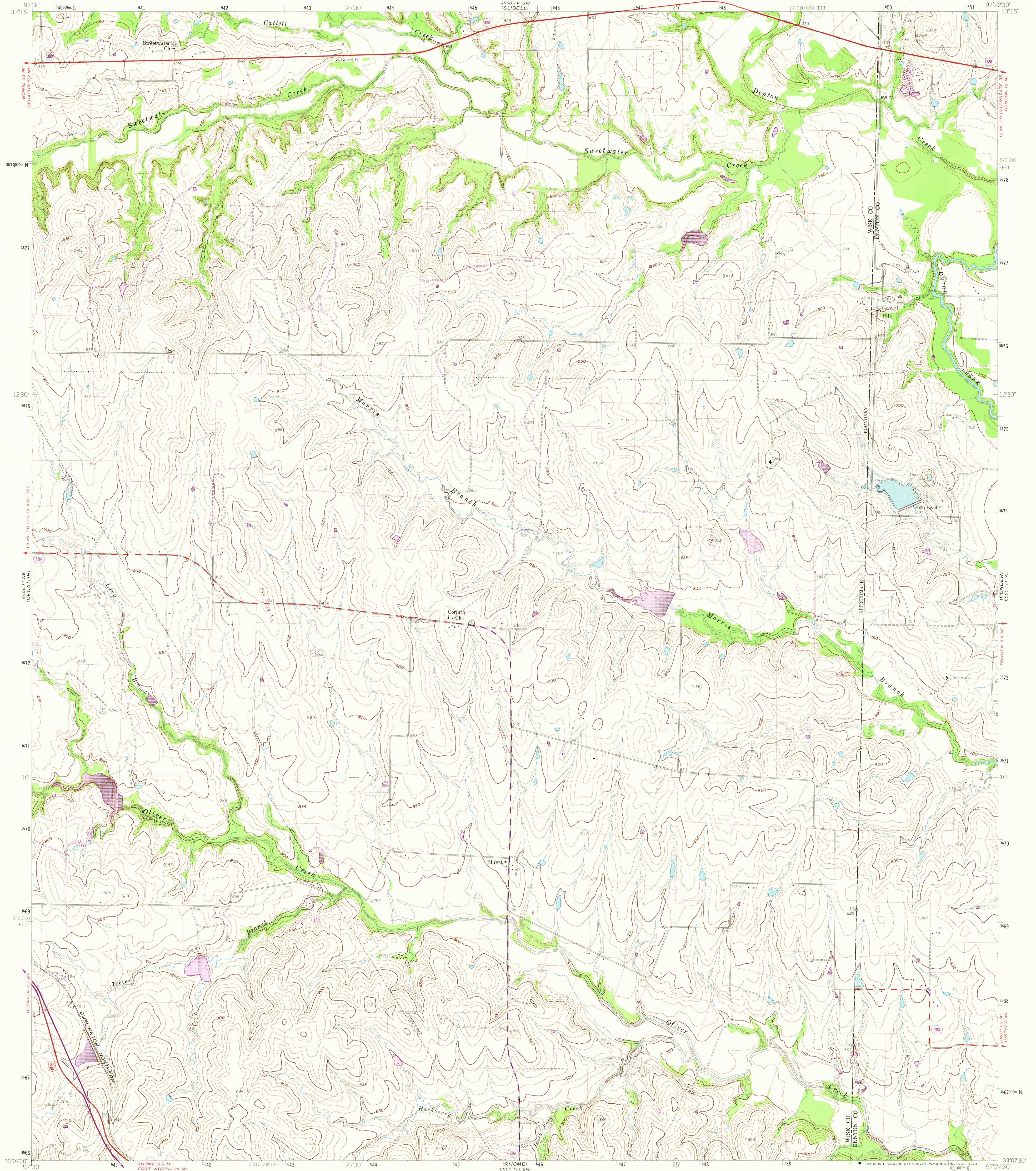


5,500 SE
(PREDAN CREEK)

UNITED STATES
DEPARTMENT OF THE INTERIOR
GEOLOGICAL SURVEY

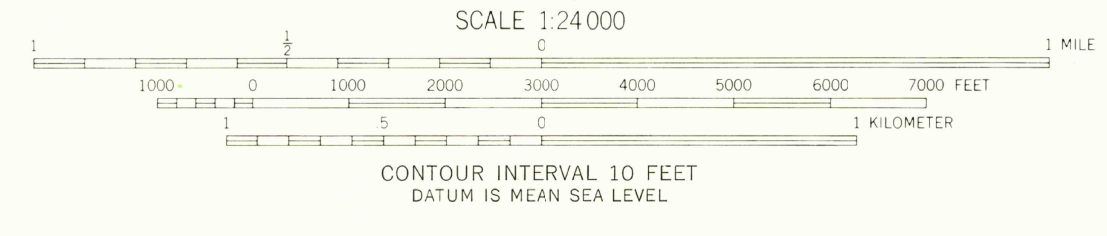
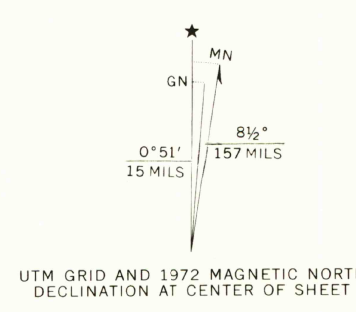
BLUETT QUADRANGLE
TEXAS
7.5 MINUTE SERIES (TOPOGRAPHIC)

6,500 SE
(ECLA BE)



Mapped, edited, and published by the Geological Survey
Control by USGS and USC&GS
Topography from aerial photographs by photogrammetric methods
Aerial photographs taken 1957. Field check 1960
Polyconic projection. 1927 North American datum
10,000 foot grid based on Texas coordinate system,
north central zone
1000 meter Universal Transverse Mercator grid ticks,
zone 14, shown in blue
Fire red dashed lines indicate selected fence and field lines
where generally visible on aerial photographs
This information is unchecked
Areas covered by dashed light blue pattern are subject to
controlled inundation

Revisions shown in purple compiled from aerial photographs
taken 1968 and 1972. This information not field checked



ROAD CLASSIFICATION

Heavy-duty	Light-duty
Medium-duty	Unimproved dirt
U.S. Route	State Route

THIS MAP COMPLIES WITH NATIONAL MAP ACCURACY STANDARDS
FOR SALE BY U. S. GEOLOGICAL SURVEY, DENVER, COLORADO 80225, OR RESTON, VIRGINIA 22092
A FOLDER DESCRIBING TOPOGRAPHIC MAPS AND SYMBOLS IS AVAILABLE ON REQUEST

USGS
Historical File
Topographic Division

BLUETT, TEX.
N3307 5-W9722 5/7.5
1960
PHOTOREVISED 1968 AND 1972
AMS 6550 111 NW-SERIES V882

JUL 0 1 1974