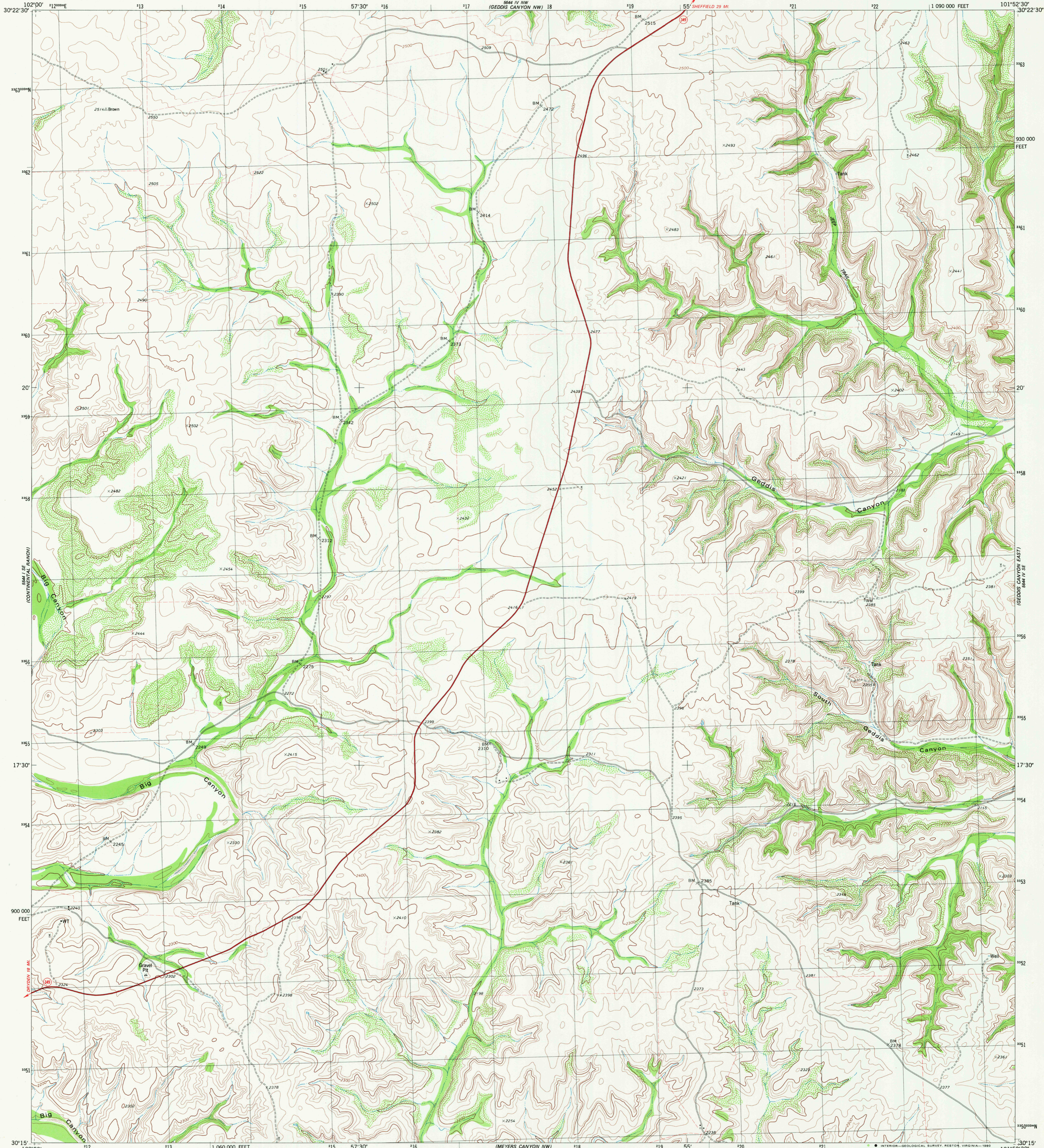


5644 IV NE
(GEDDIS CANYON NW)
5644 III NE
(GEDDIS CANYON NW)

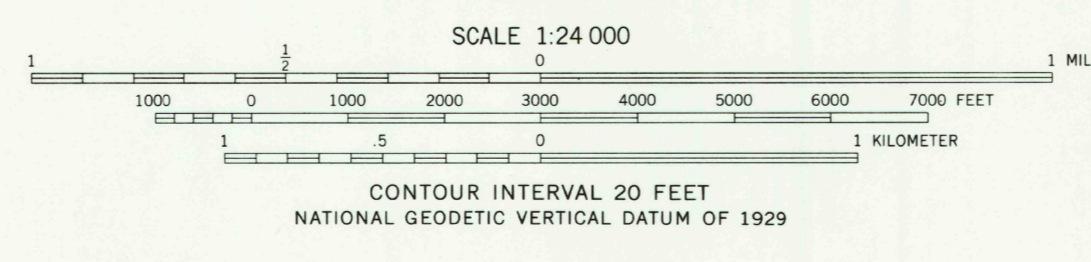
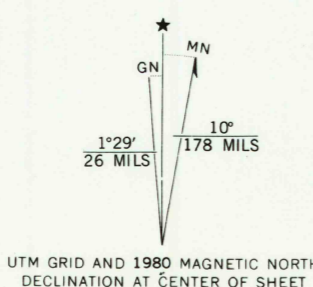
UNITED STATES
DEPARTMENT OF THE INTERIOR
GEOLOGICAL SURVEY

GEDDIS CANYON WEST QUADRANGLE
TEXAS—TERRELL CO.
7.5 MINUTE SERIES (TOPOGRAPHIC)

5644 IV NE
(GEDDIS CANYON NW)



Mapped, edited, and published by the Geological Survey
Control by USGS and NOS/NOAA
Topography by photogrammetric methods from aerial photographs taken 1974. Field checked 1976. Map edited 1980
Projection and 10,000-foot grid ticks: Texas coordinate system, south central zone (Lambert conformal conic) 1000-meter Universal Transverse Mercator grid, zone 14 1927 North American datum
To place on the predicted North American Datum 1983 move the projection lines 16 meters south and 39 meters east as shown by dashed corner ticks
Fine red dashed lines indicate selected fence lines



ROAD CLASSIFICATION

| | |
|---------------------------------|---|
| Primary highway, hard surface | Light-duty road, hard or improved surface |
| Secondary highway, hard surface | Unimproved road |
| Interstate Route | U.S. Route |
| | State Route |

THIS MAP COMPLIES WITH NATIONAL MAP ACCURACY STANDARDS
FOR SALE BY U.S. GEOLOGICAL SURVEY, DENVER, COLORADO 80225, OR RESTON, VIRGINIA 22092
A FOLDER DESCRIBING TOPOGRAPHIC MAPS AND SYMBOLS IS AVAILABLE ON REQUEST

3001-232

USGS
Historical File
Topographic Division
GEDDIS CANYON WEST, TEX.
N3015-W10152.5/7.5
1980

OCT - 2 1980

DMA 5644 IV SW—SERIES V382

2000