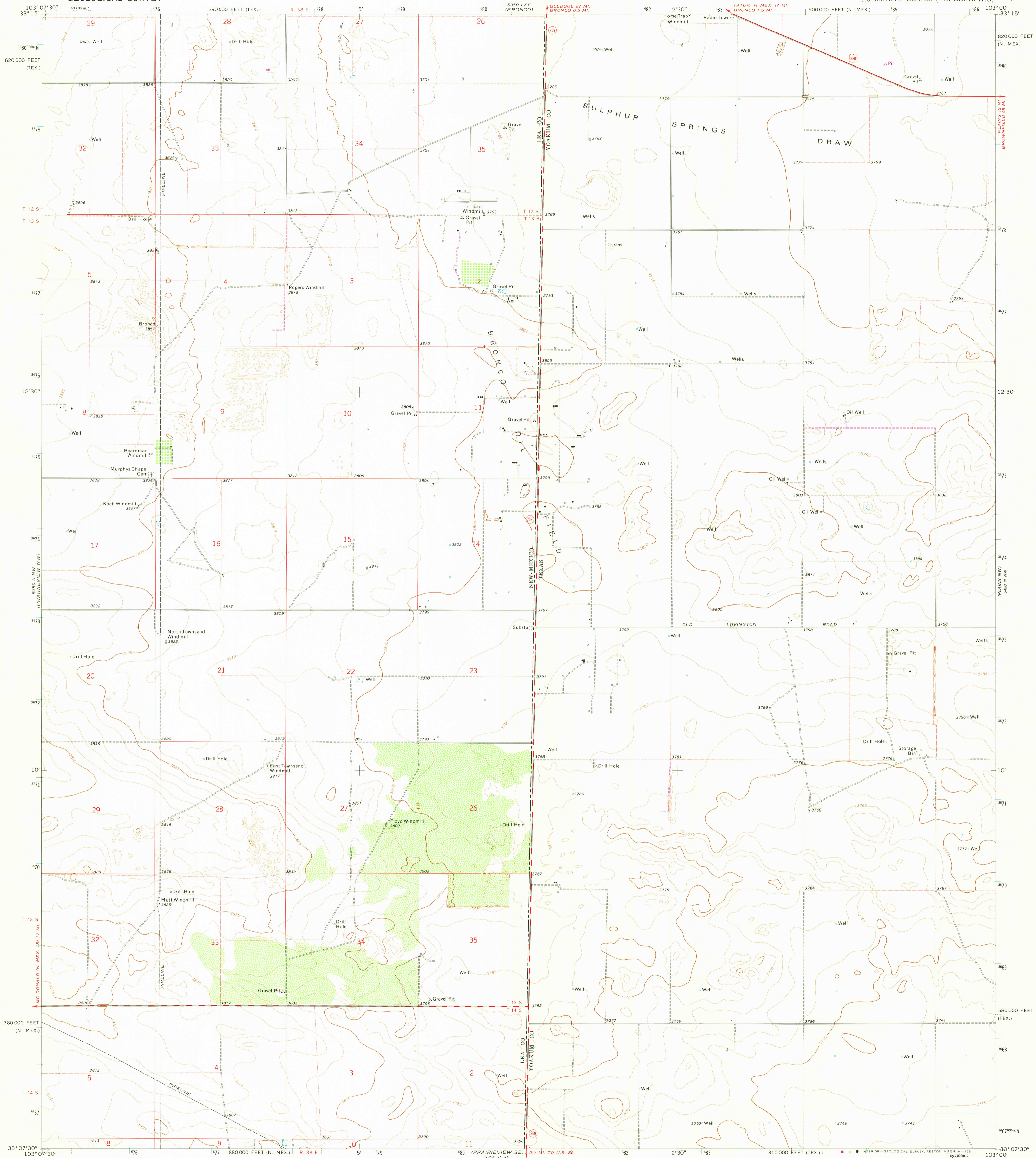
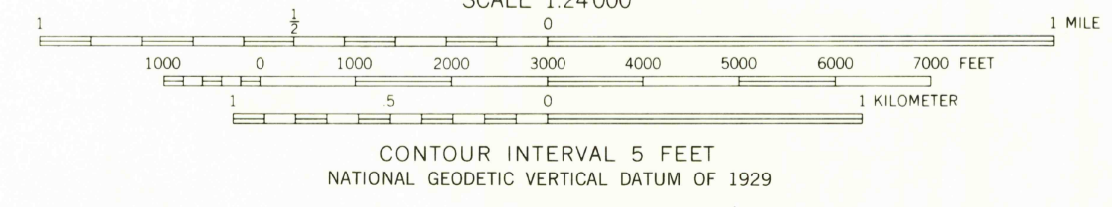
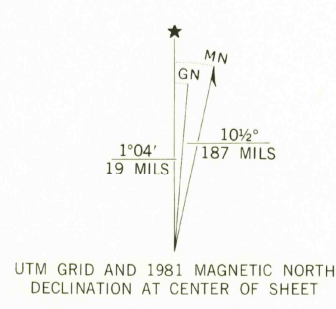


UNITED STATES
DEPARTMENT OF THE INTERIOR
GEOLOGICAL SURVEY

PRAIRIEVIEW NE QUADRANGLE
NEW MEXICO—TEXAS
7.5 MINUTE SERIES (TOPOGRAPHIC)



Mapped, edited, and published by the Geological Survey
Control by USGS and USC&GS
Planimetry by photogrammetric methods from aerial photographs taken 1968. Topography by planetable surveys 1970.
Polyconic projection. 1927 North American datum
10,000-foot grids based on New Mexico coordinate system, east zone, and Texas coordinate system, north central zone 1000-meter Universal Transverse Mercator grid ticks, zone 13, shown in blue
Fine red dashed lines indicate selected fence lines
To place on the predicted North American Datum 1983 move the projection lines 8 meters south and 45 meters east as shown by dashed corner ticks
Revisions shown in purple compiled from aerial photographs taken 1979. Map edited 1981. This information not field checked



ROAD CLASSIFICATION

Primary highway, all weather, hard surface	Light duty road, all weather, improved surface
Secondary highway, all weather, hard surface	Unimproved road, fair or dry weather

U. S. Route State Route

THIS MAP COMPLIES WITH NATIONAL MAP ACCURACY STANDARDS
FOR SALE BY U. S. GEOLOGICAL SURVEY, DENVER, COLORADO 80225, OR RESTON, VIRGINIA 22092
A FOLDER DESCRIBING TOPOGRAPHIC MAPS AND SYMBOLS IS AVAILABLE ON REQUEST

USGS
HISTORICAL FILE
NATIONAL MAPPING DIVISION
1970
PHOTOREVISED 1981
DMA 5350 II NE—SERIES V881

JUL 24 1981

2100