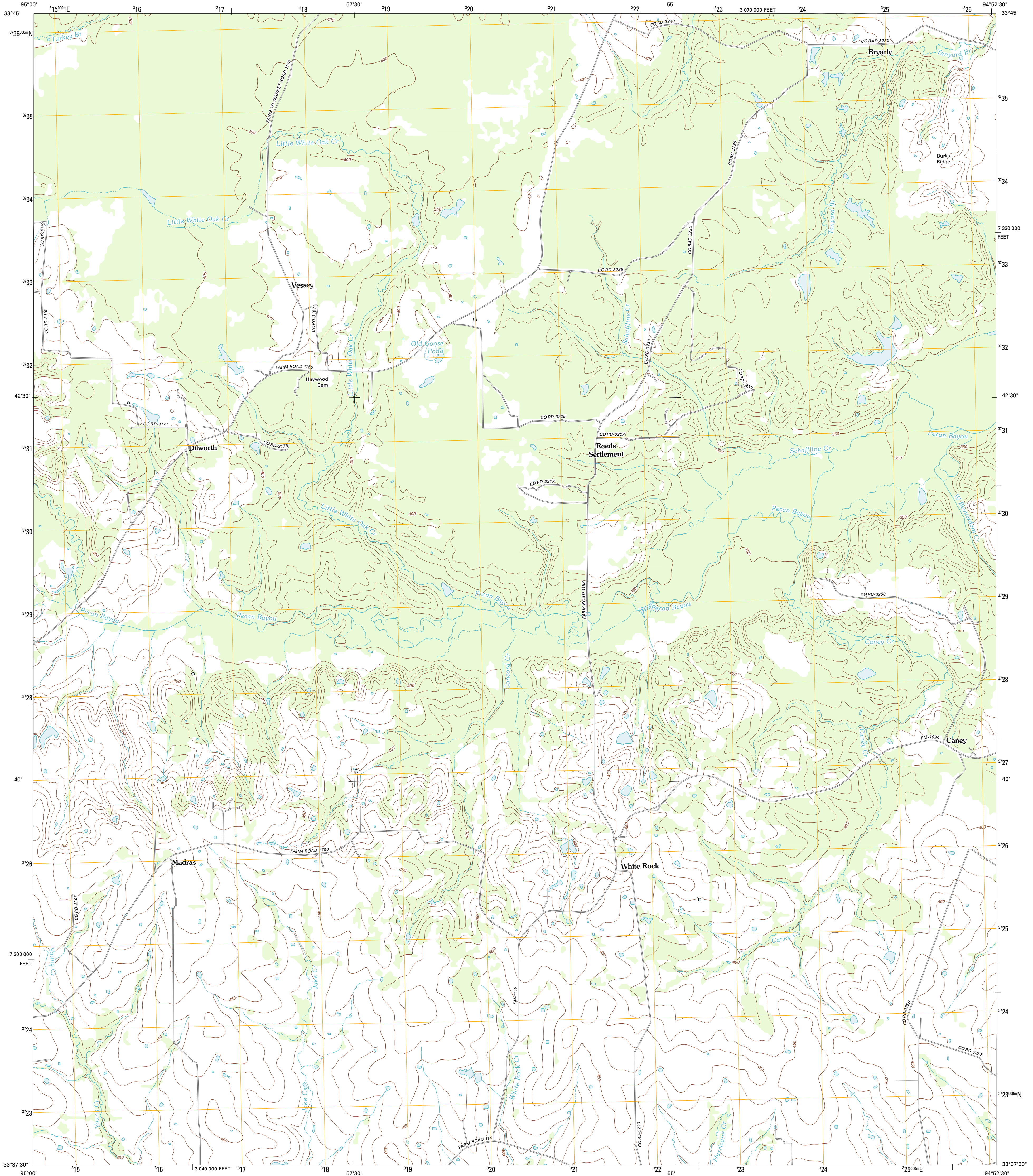




U.S. DEPARTMENT OF THE INTERIOR  
U. S. GEOLOGICAL SURVEY

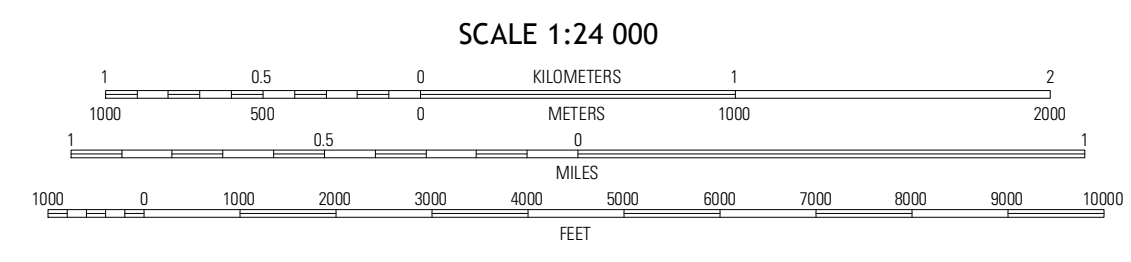
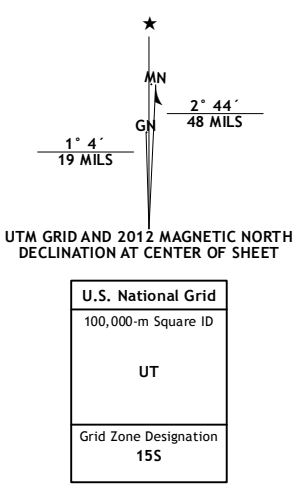


WHITE ROCK QUADRANGLE  
TEXAS-OKLAHOMA  
7.5-MINUTE SERIES



Produced by the United States Geological Survey  
North American Datum of 1983 (NAD83)  
World Geodetic System of 1984 (WGS84). Projection and  
1 000-meter grid: Universal Transverse Mercator, Zone 15  
10 000-foot ticks: Texas Coordinate System of 1983 (north  
central zone), Oklahoma Coordinate System of 1983 (south  
zone)

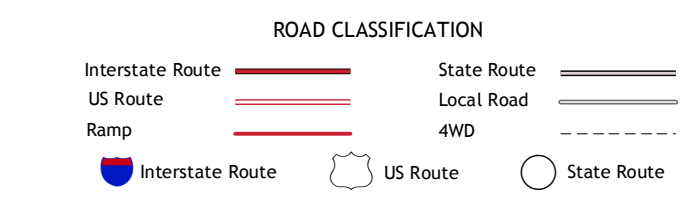
Imagery.....NAIP, August 2010  
Roads.....©2006-2012 TomTom  
Names.....©2012  
Hydrography.....National Hydrography Dataset, 2010  
Contours.....National Elevation Dataset, 2004  
Boundaries.....Census, IBWC, IBC, USGS, 1972-2012



QUADRANGLE LOCATION

Negley	Acworth	Mahall SE
Dimple	White Rock	English
Clarkville	Atkinson	Avvey

ADJOINING 7.5 QUADRANGLES



This map was produced to conform with the  
National Geospatial Program US Topo Product Standards, 2011.  
A metadata file associated with this product is draft version 0.6.7

WHITE ROCK, TX-OK  
2012