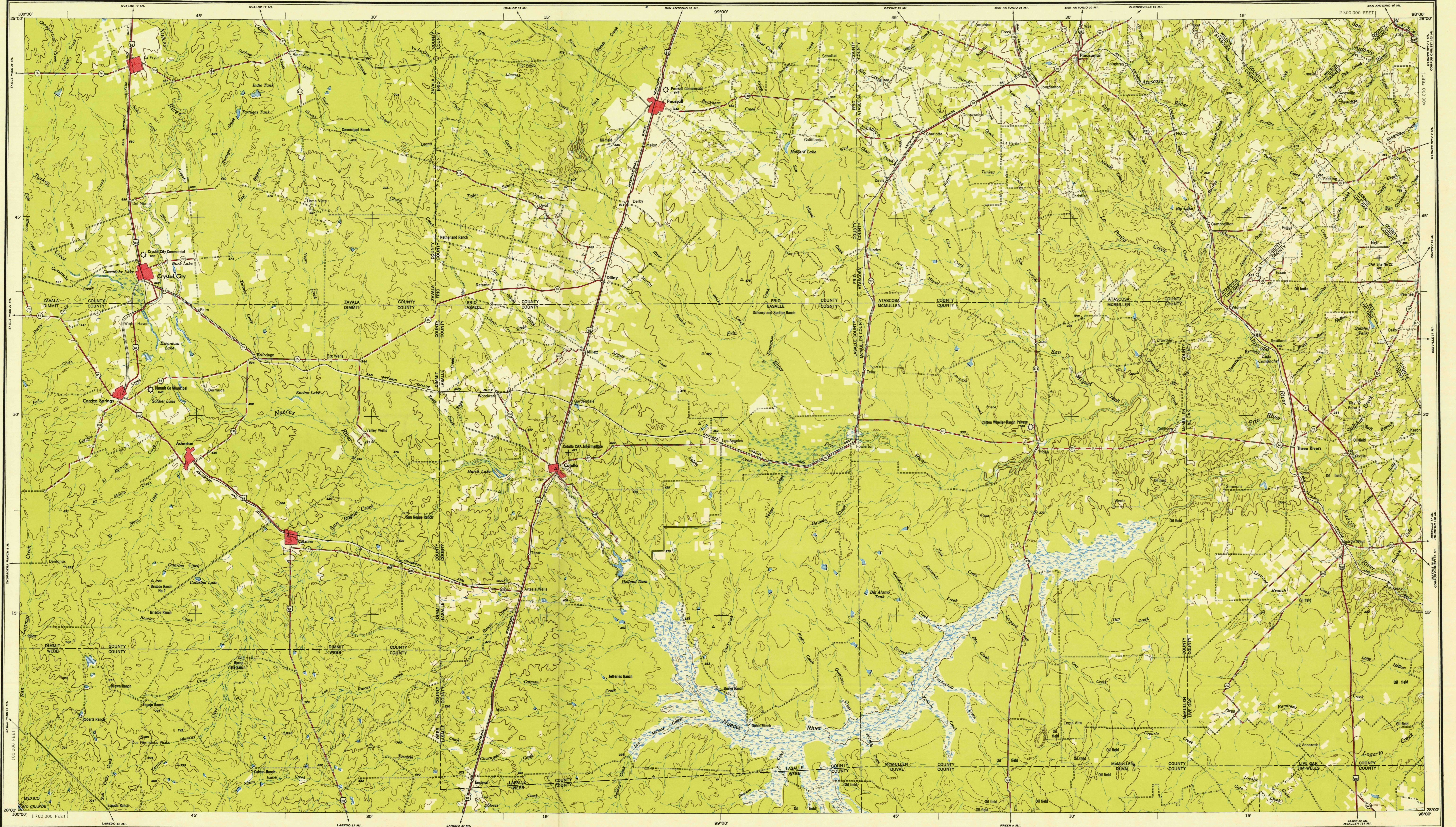


FILE COPY
Impression and Reducing

CRYSTAL CITY



AMS V502
First Edition-AMS
Prepared by the Army Map Service (AMS), Corps of Engineers, U. S. Army, Washington, D. C. Compiled in 1949 from United States Quartermasters, 1:62,500 and 1:125,000, U. S. Geological Survey and Corps of Engineers, 1918-1944; County Highway Maps, 1947-1948; and intelligence data to 1949. Planimetric detail partially revised by photogrammetric methods. Aerial photography 1938-1948. Road and railroad data verified by state authorities, 1951. Airfields verified by CAA. Control by U. S. Coast and Geodetic Survey and U. S. Geological Survey.

LEGEND

ROAD DATA 1951

Small large	Hard surface, heavy duty road	2 LANES 1/2 LANES
500,000 or over	more than two lanes wide	
100,000 to 500,000	two lanes wide	
25,000 to 100,000	Hard surface, medium duty road	2 LANES 1/2 LANES
5,000 to 25,000	more than two lanes wide	
1,000 to 5,000	Hard surface, medium duty road	
1,000 or less	Old Dominion dirt road; Trail	

RAILROADS

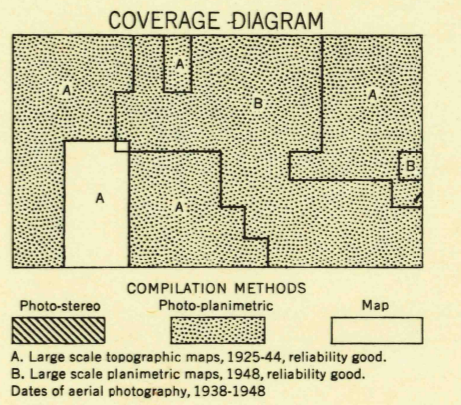
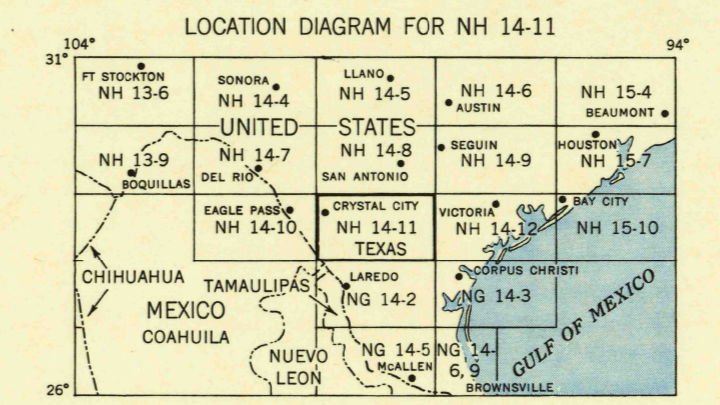
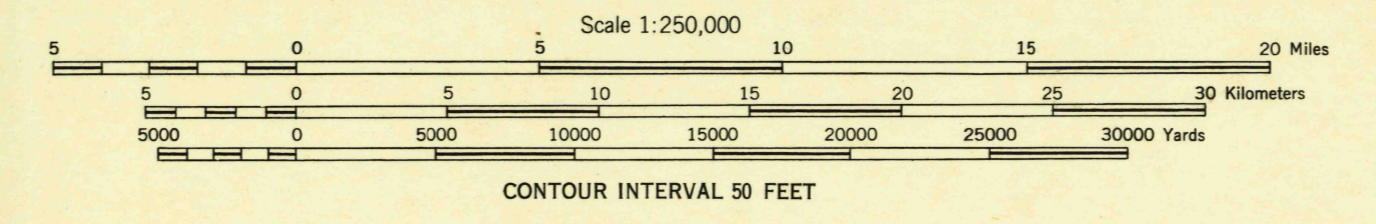
Standard gauge	Single track	Spot elevation in feet
Narrow gauge	Multiple track	Woodland
International boundary		Military airfield
State boundary		Municipal or commercial airfield
County boundary		Auxiliary airfield
Park and reservation		Reef; Limit of danger line
		Seaplane base
		Rocks awash; Wharf, pier
		Seaplane anchorage
		Foreshore flats

POPULATED PLACES

BOSTON	Large
RICHMOND	Medium
ALEXANDRIA	Small

RAILROADS

Standard gauge	Single track	Spot elevation in feet
Narrow gauge	Multiple track	Woodland
International boundary		Military airfield
State boundary		Municipal or commercial airfield
County boundary		Auxiliary airfield
Park and reservation		Reef; Limit of danger line
		Seaplane base
		Rocks awash; Wharf, pier
		Seaplane anchorage
		Foreshore flats



FILE COPY
Impression and Reducing

PRINTED BY ARMY MAP SERVICE, CORPS OF ENGINEERS, 2-53, 91261