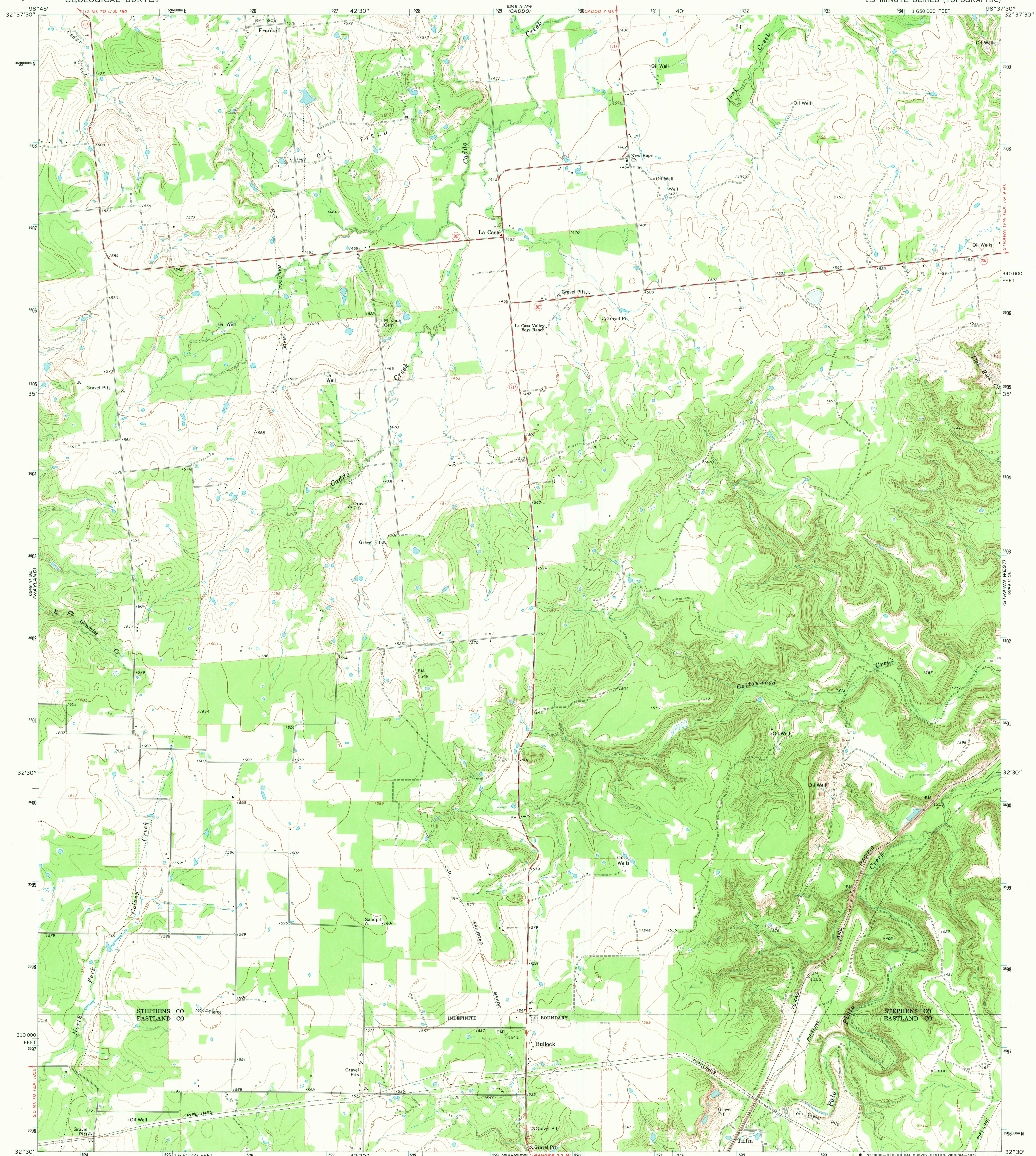


Scale if NE  
Necessary

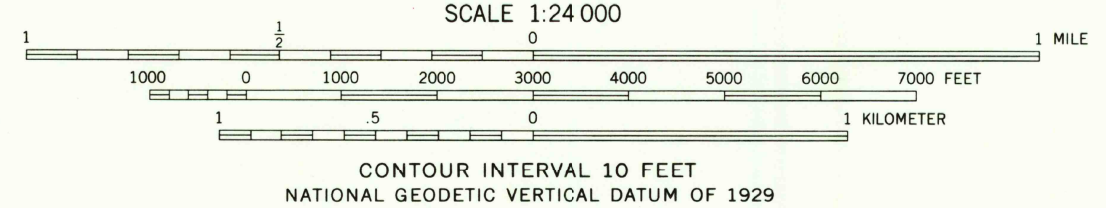
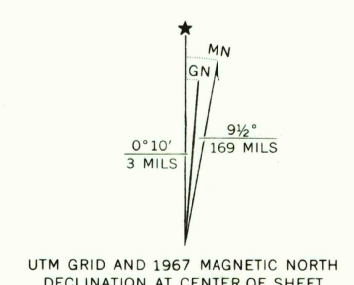
UNITED STATES  
DEPARTMENT OF THE INTERIOR  
GEOLOGICAL SURVEY

LA CASA QUADRANGLE  
TEXAS  
7.5 MINUTE SERIES (TOPOGRAPHIC)

Scale if NE  
Caddo (NE)



Mapped, edited, and published by the Geological Survey  
Control by USGS and USC&GS  
Topography by photogrammetric methods from aerial  
photographs taken 1966. Field checked 1967  
Polyconic projection. 1927 North American datum  
10,000-foot grid based on Texas coordinate system,  
north central zone  
1000-meter Universal Transverse Mercator grid ticks,  
zone 14, shown in blue  
Fine red dashed lines indicate selected fence lines



ROAD CLASSIFICATION  
Medium-duty ——— Light-duty ———  
Unimproved dirt - - - - -  
State Route ○

THIS MAP COMPLIES WITH NATIONAL MAP ACCURACY STANDARDS  
FOR SALE BY U. S. GEOLOGICAL SURVEY, DENVER, COLORADO 80225, OR RESTON, VIRGINIA 22092  
A FOLDER DESCRIBING TOPOGRAPHIC MAPS AND SYMBOLS IS AVAILABLE ON REQUEST

3298-312

USGS  
HISTORICAL FILE  
NATIONAL MAPPING DIVISION

LA CASA, TEX.  
N3230-W9837.5/7.5  
1967  
DMA 6249 II SW-SERIES V882

SEP 3 1981

700

Scale if NE  
Gear Mountain