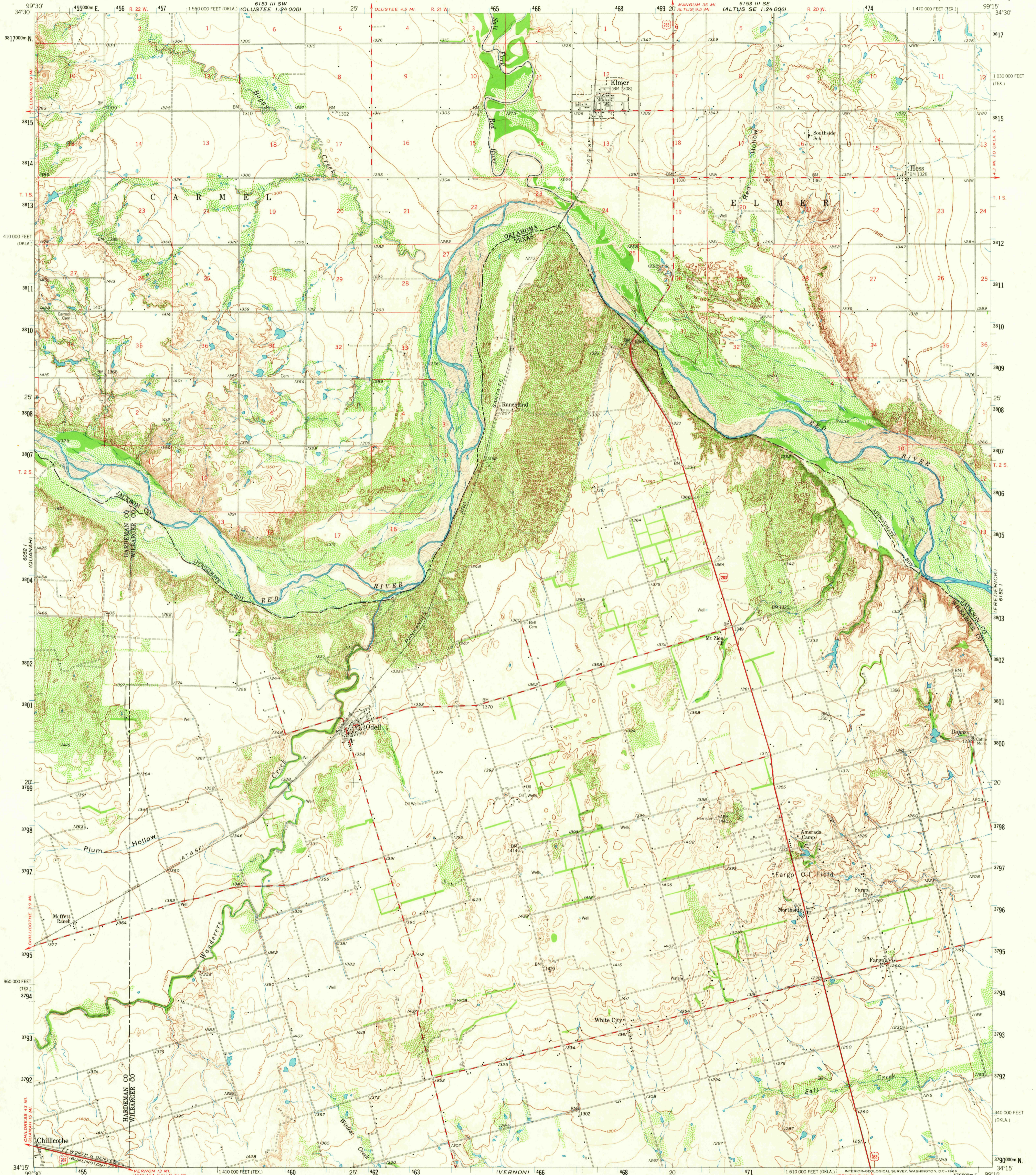
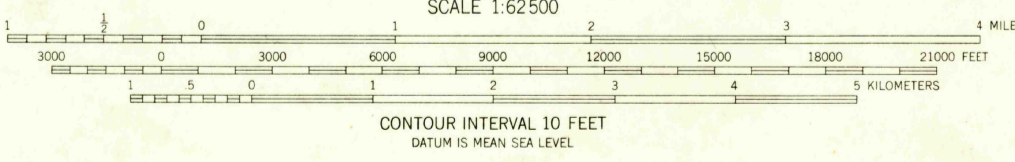
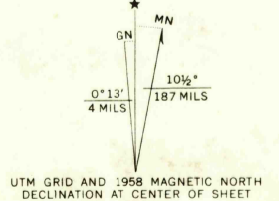


6152 IV SW
MPTON 1:24,000



Maped, edited, and published by the Geological Survey
Control by USGS and USC&GS

Topography from aerial photographs by photogrammetric methods
and by planetable surveys 1958. Aerial photographs taken 1953
Polyconic projection. 1927 North American datum
10,000-foot grid based on Texas coordinate system,
north central zone and Oklahoma coordinate system, south zone
1000-meter Universal Transverse Mercator grid ticks,
zone 14, shown in blue



ROAD CLASSIFICATION

Heavy-duty	Light-duty
Medium-duty	Unimproved dirt
U.S. Route	

THIS MAP COMPLIES WITH NATIONAL MAP ACCURACY STANDARDS
FOR SALE BY U.S. GEOLOGICAL SURVEY, DENVER, COLORADO 80225 OR WASHINGTON, D.C. 20242
A FOLDER DESCRIBING TOPOGRAPHIC MAPS AND SYMBOLS IS AVAILABLE ON REQUEST

U.S.G.S. ELMER, TEX.-OKLA. JUN 8 1958
FILE COPY N3415-W9915/15
TOPOGRAPHIC DIVISION 2730
AMS 6152 IV-SERIES V782