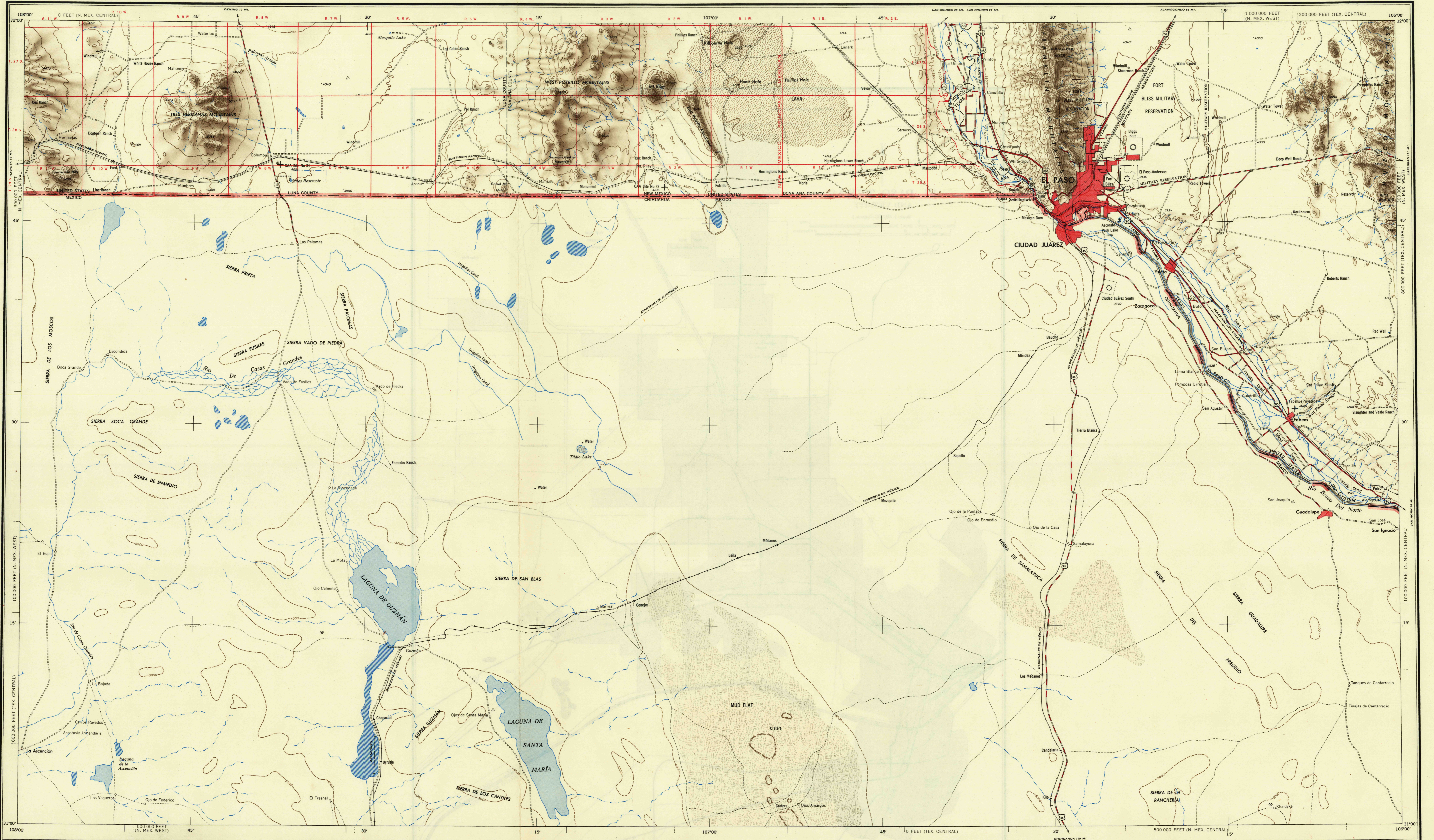


FILE COPY
Imposition and Binding



AMS V502
First Edition-AMS
Prepared by the Army Map Service (AM), Corps of Engineers, U. S. Army, Washington, D. C. Compiled in 1950 from United States Quadrangles, 1:250,000, 1:50,000, Corps of Engineers and U. S. Geological Survey, 1:50,000; AMF Preliminary Base, El Paso, 1:500,000, Aeronautical Chart Service, 1944; Sectional Aeronautical Chart, El Paso, 1:500,000, U. S. Coast and Geodetic Survey, 1947; County Highway Maps, 1945-48; and intelligence data to 1950. Planimetric detail partially revised by photo-planimetric methods. Aerial photography, 1942-47. Road and railroad data in New Mexico and Texas, and aeronautical data in New Mexico verified by state authorities, 1950. Control by U. S. Coast and Geodetic Survey, U. S. Geological Survey, International Boundary Commission. Road classification in Mexico should be referred to with extreme caution.

LEGEND

ROAD DATA 1950

Wet surfaces, heavy duty road, more than two lanes wide
Wet surfaces, heavy duty road, two lanes wide
Wet surfaces, medium duty road, more than two lanes wide
Wet surfaces, medium duty road, two lanes wide
Loose surfaces, graded and drained road
Old Dominion Dirt road; Trail
Stowell Route markers: Federal; State

RAILROADS

Standard gauge
Narrow gauge
International boundary
State boundary
County boundary
Park and reservation

Spot elevation in feet
Woodland
Intermittent stream
Swamp, marsh
Reef; Limit of danger line
Rocks awash; Wharf, pier
Foreshore flats

POPULATED PLACES

Small; large
500,000 or over
100,000 to 500,000
25,000 to 100,000
5,000 to 25,000
1,000 to 5,000
1,000 or less

SIERRAS & LAKES

BOSTON RICHMOND ALEXANDRIA

Marion

GLLOSSARY

lagoon — lake
río — river
sierra — mountain range

Scale 1:250,000

0 5 10 15 20 Miles
0 5 10 15 20 25 30 Kilometers

CONTOUR INTERVAL 100 FEET WITH APPROXIMATE CONTOURS AT 1000 FOOT INTERVALS IN MEXICO

DATUM IS MEAN SEA LEVEL

TRANSVERSE MERCATOR PROJECTION
1927 NORTH AMERICAN DATUM

100,000-FOOT GRID BASED ON TEXAS COORDINATE SYSTEM, CENTRAL ZONE, AND NEW MEXICO COORDINATE SYSTEM, CENTRAL AND WEST ZONES

1960 MAGNETIC DECLINATION FOR THIS SHEET VARIES FROM 13°00' EASTERLY FOR THE CENTER OF THE WEST EDGE TO 12°30' EASTERLY FOR THE CENTER OF THE EAST EDGE. MEAN ANNUAL CHANGE IS 0°01' WESTERLY.

FOR SALE BY U. S. GEOLOGICAL SURVEY, FEDERAL CENTER, DENVER, COLORADO OR WASHINGTON 25, D. C.

LOCATION DIAGRAM FOR NH 13-1

112° 110° 108° 106° 104°
34° 32° 30° 28° 26° 24° 22° 20° 18° 16° 14° 12°

ARIZONA NEW MEXICO TEXAS
SONORA MEXICO CHIHUAHUA

NH 12-9
NH 12-10
NH 12-11
NH 12-12
NH 12-13
NH 12-14
NH 12-15
NH 12-16
NH 12-17
NH 12-18
NH 12-19
NH 12-20
NH 12-21
NH 12-22
NH 12-23
NH 12-24
NH 12-25
NH 12-26
NH 12-27
NH 12-28
NH 12-29
NH 12-30
NH 12-31
NH 13-1
NH 13-2
NH 13-3
NH 13-4
NH 13-5
NH 13-6
NH 13-7
NH 13-8
NH 13-9
NH 13-10
NH 13-11
NH 13-12
NH 13-13
NH 13-14
NH 13-15
NH 13-16
NH 13-17
NH 13-18
NH 13-19
NH 13-20
NH 13-21
NH 13-22
NH 13-23
NH 13-24
NH 13-25
NH 13-26
NH 13-27
NH 13-28
NH 13-29
NH 13-30
NH 13-31

COVERAGE DIAGRAM

Photo stereo
Map

COMPILED METHODS

Areas for which woodland information is available, and in which no woodland exists.

A. Large scale topographic maps, 1:50,000 to 1:250,000, reliability good
B. Medium scale topographic maps, 1:50,000 to 1:250,000, reliability poor
Dates of aerial photography: 1942-47

SECTIONIZED TOWNSHIP

6	5	4	3	2	1
7	8	9	10	11	12
18	17	16	15	14	13
19	20	21	22	23	24
30	29	28	27	26	25
31	32	33	34	35	36

TOWNSHIP OR RANGE LINE
LAND GRANT BOUNDARY

EL PASO, UNITED STATES, MEXICO
N3100.W10600.100x200

FILE COPY
Imposition and Binding