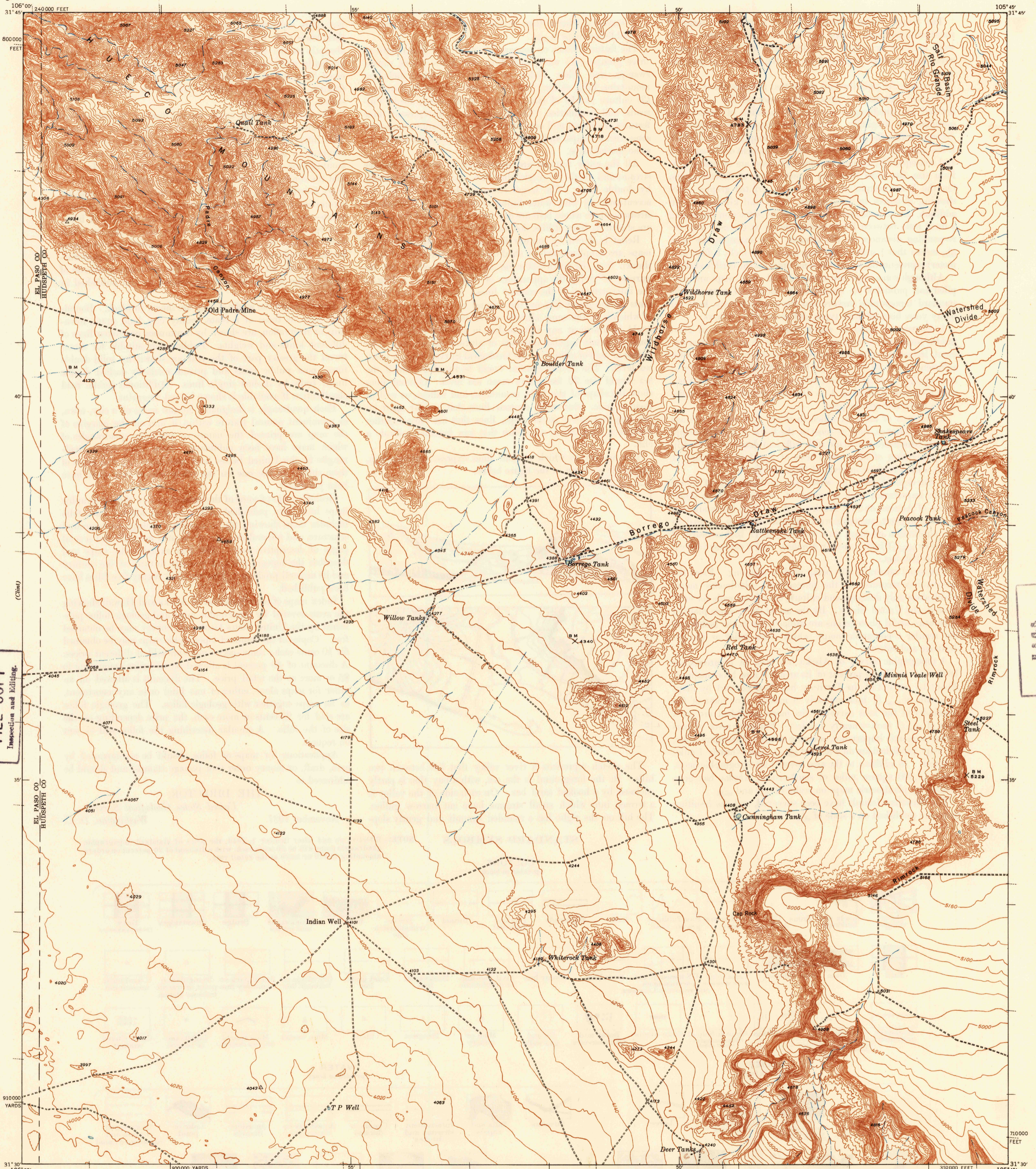


U. S. G. S.
FILE COPY
Inspection and Editing.



(Hudson Tanks)
800000 FEET
31° 45'
106° 00'
240000 FEET
EL PASO CO.
HUDSPETH CO.
31° 30'

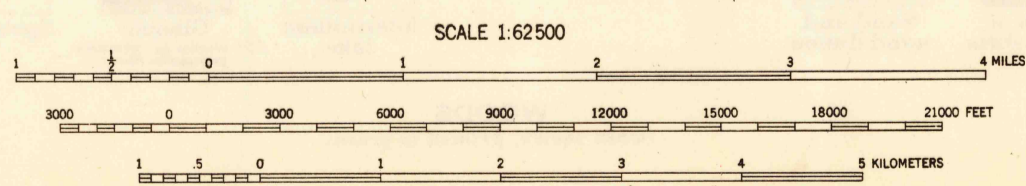
105° 45'
31° 45'
31° 30'

U. S. G. S.
FILE COPY
Inspection and Editing.

U. S. G. S.
FILE COPY
Inspection and Editing.

Topography by C. C. Holder, G. M. Perham,
and F. W. Thorstenson
Surveyed in 1940

12 1/2° E
TRUE NORTH
MAGNETIC NORTH
APPROXIMATE MEAN
DECLINATION, 1940



Contour interval 20 feet
Datum is mean sea level

U. S. G. S.
FILE COPY
Inspection and Editing.

Polyconic projection. 1927 North American datum
5000 yard grid based on U. S. zone system. E
10000 foot grid based on Texas (Central)
rectangular coordinate system

BORREGO, TEX.
Edition of 1942
reprinted 1943
N3130-W10545/15