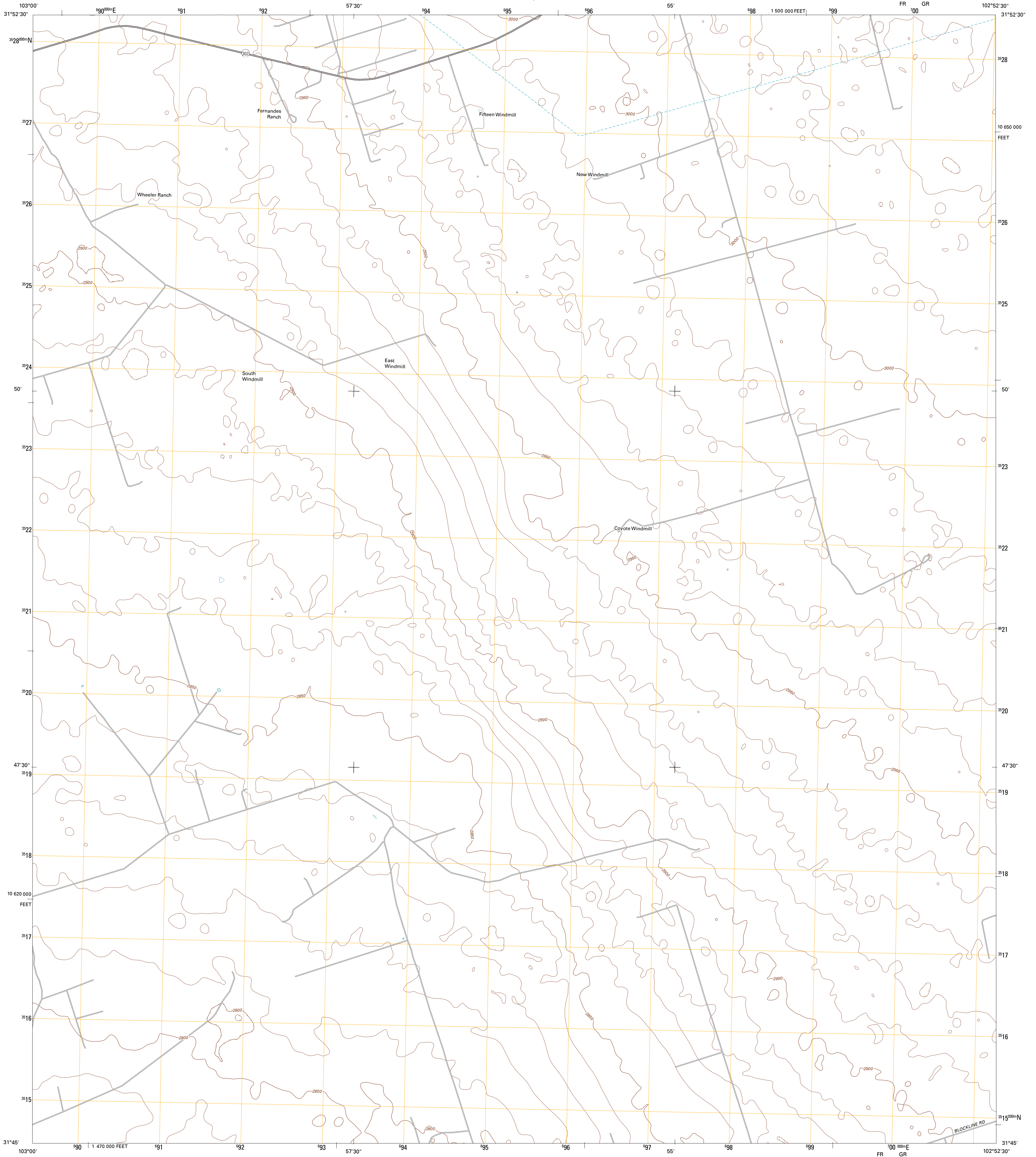




U.S. DEPARTMENT OF THE INTERIOR  
U. S. GEOLOGICAL SURVEY

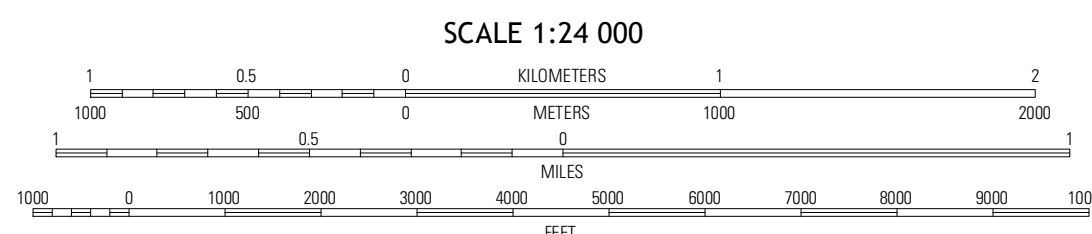
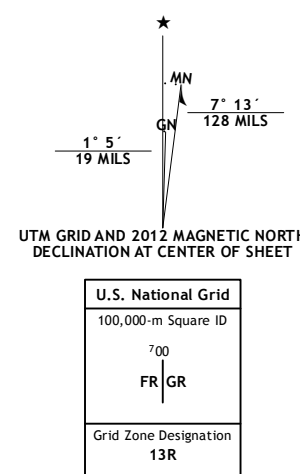


WHEELER RANCH QUADRANGLE  
TEXAS-WINKLER CO.  
7.5-MINUTE SERIES



Produced by the United States Geological Survey  
North American Datum of 1983 (NAD83)  
World Geodetic System of 1984 (WGS84). Projection and  
1,000-meter grid: Universal Transverse Mercator, Zone 13R  
10,000-foot ticks: Texas Coordinate System of 1983 (central  
zone)

Imagery.....NIP, August 2010  
Roads.....C2006-2012 TomTom  
Names.....GNS, 2012  
Hydrography.....National Hydrography Dataset, 2010  
Contours.....National Elevation Dataset, 2008  
Boundaries.....Census, IBW, IBC, USGS, 1972 - 2012



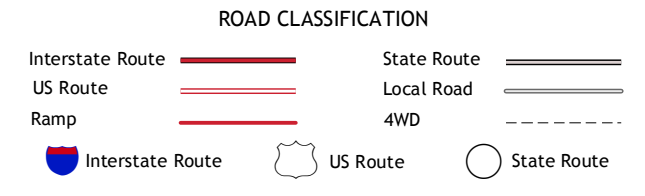
CONTOUR INTERVAL 10 FEET  
NORTH AMERICAN VERTICAL DATUM OF 1988  
This map was produced to conform with the  
National Geospatial Program US Topo Product Standard, 2011.  
A metadata file associated with this product is draft version 0.6.7



QUADRANGLE LOCATION

Verme	Notres NW	Notres
Kermitt	Wheeler Ranch	Amburgs Ranch
Pote NE	China Ranch	Cowden Place

ADJOINING 7.5 QUADRANGLES



WHEELER RANCH, TX  
2012