

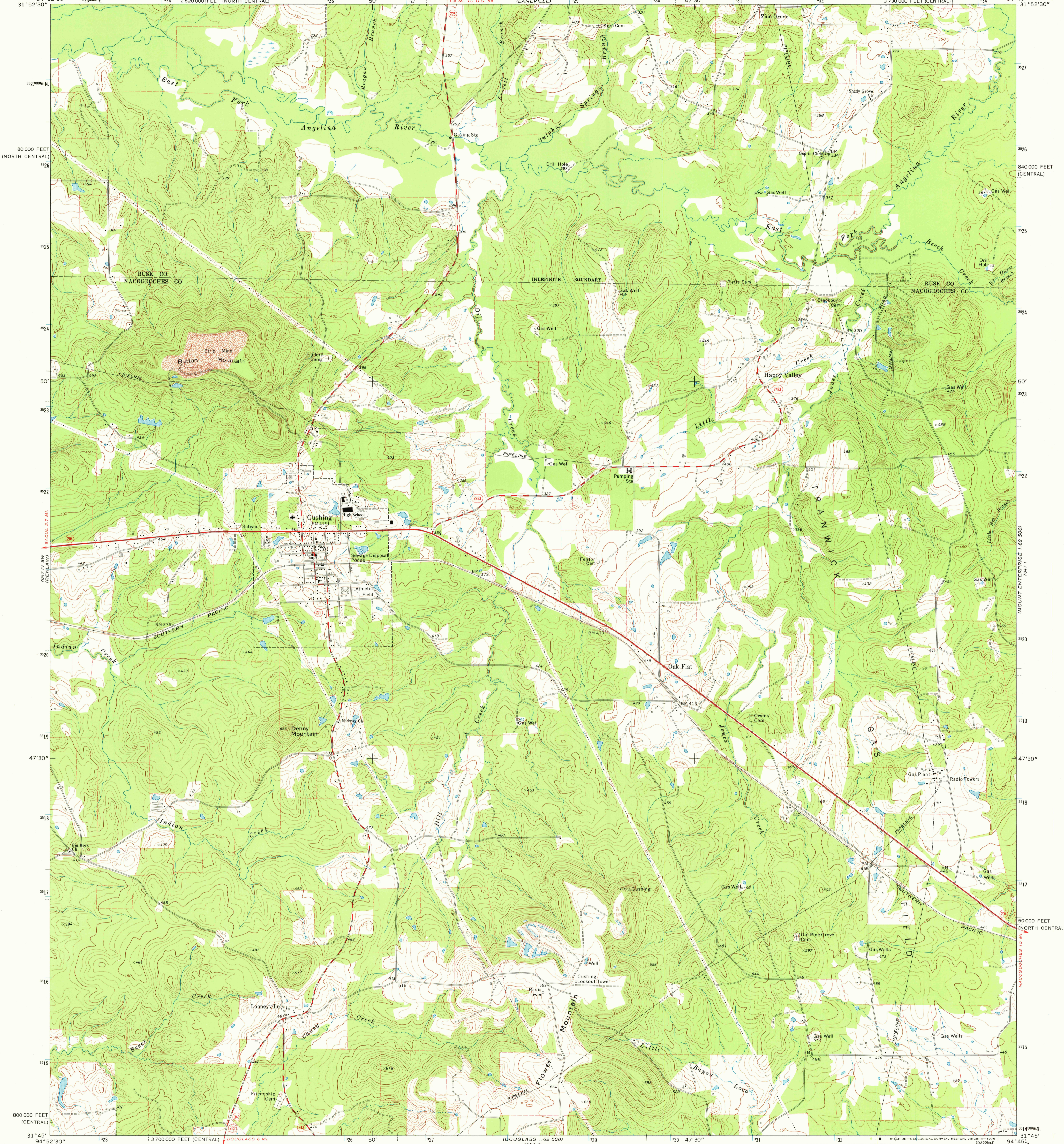
7047 III
(NEW SALEM)

UNITED STATES
DEPARTMENT OF THE INTERIOR
GEOLOGICAL SURVEY

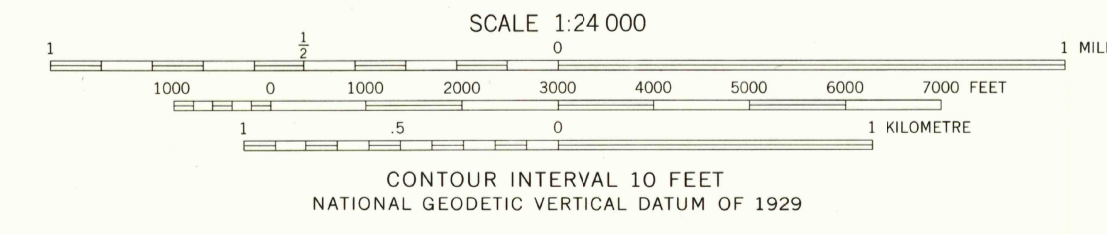
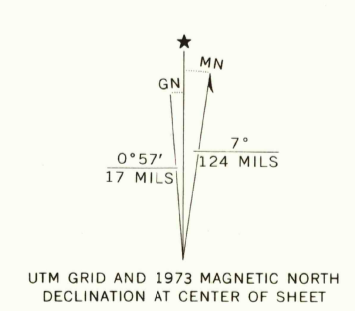
STATE OF TEXAS
TEXAS WATER DEVELOPMENT BOARD

CUSHING QUADRANGLE
TEXAS
7.5 MINUTE SERIES (TOPOGRAPHIC)
SE/4 CUSHING 15' QUADRANGLE

7047 IV
(MOUNT ENTERPRISE)



Mapped, edited, and published by the Geological Survey
Control by USGS and NOS/NOAA
Topography by photogrammetric methods from aerial photographs taken 1971. Field checked 1973
Projection: Texas coordinate system, central zone (Lambert conformal conic)
10,000-foot grid ticks based on Texas coordinate system, central and north central zones
1000-metre Universal Transverse Mercator grid ticks, zone 15, shown in blue. 1927 North American datum
Fine red dashed lines indicate selected fence lines



ROAD CLASSIFICATION	
Primary highway, hard surface	Light-duty road, hard or improved surface
Secondary highway, hard surface	Unimproved road
Interstate Route	U. S. Route
	State Route

THIS MAP COMPLIES WITH NATIONAL MAP ACCURACY STANDARDS
FOR SALE BY U.S. GEOLOGICAL SURVEY, DENVER, COLORADO 80225, OR RESTON, VIRGINIA 22092
A FOLDER DESCRIBING TOPOGRAPHIC MAPS AND SYMBOLS IS AVAILABLE ON REQUEST

CUSHING, TEX.
SE/4 CUSHING 15' QUADRANGLE
N3145-W9445/7.5
1973
AMS 7047 IV SE-SERIES V882
USGS
Historical File
Topographic Division

AUG 23 1976