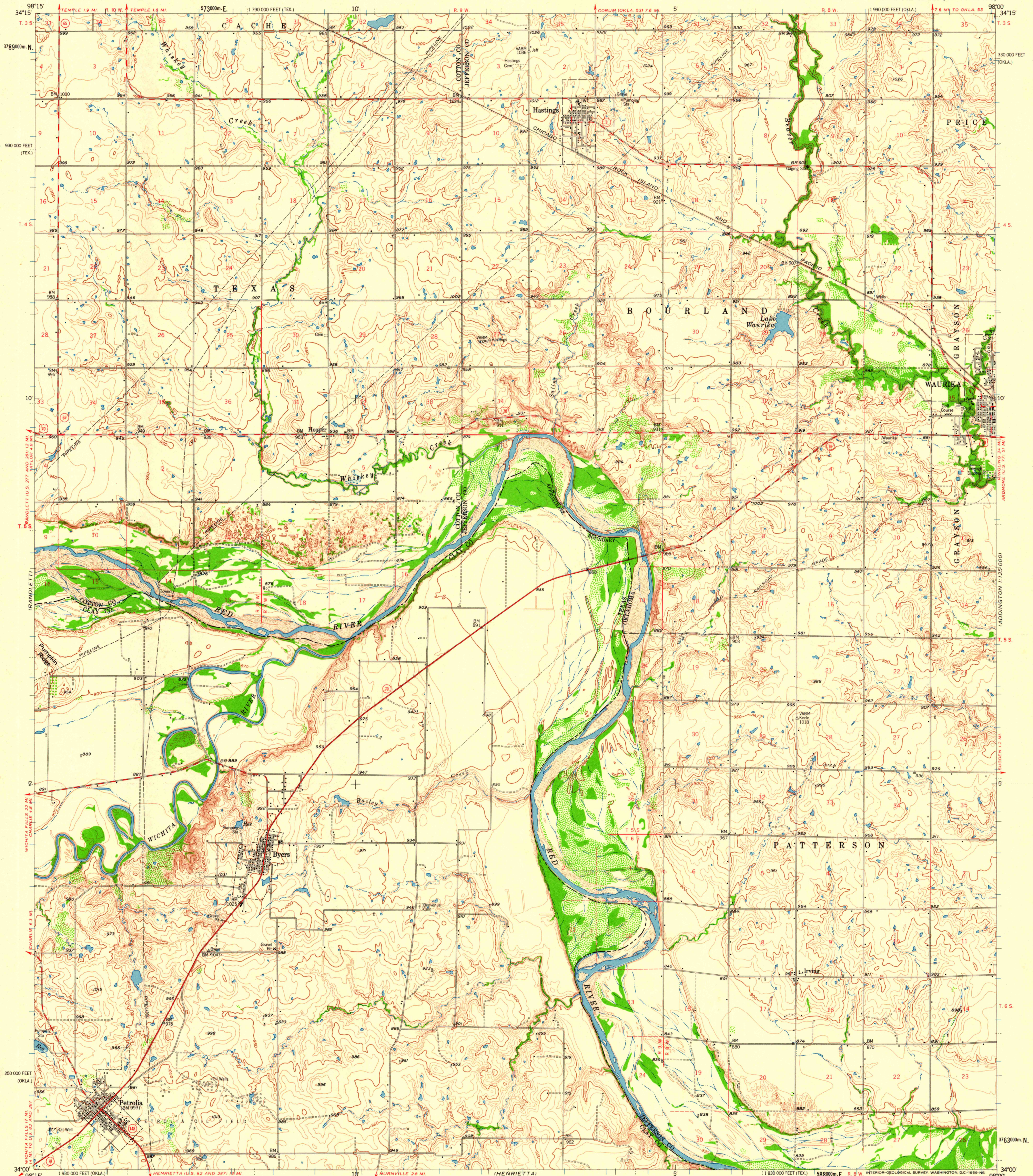
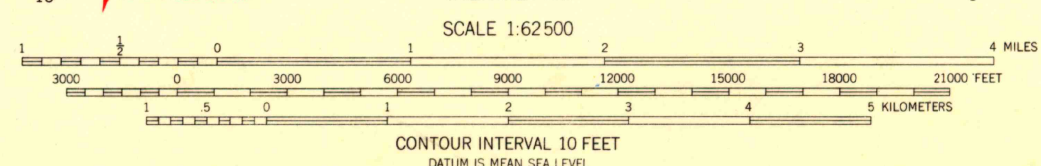


ADDITIONAL
1:250,000



Mapped, edited, and published by the Geological Survey
Control by USGS and USC&GS
Topography from aerial photographs by photogrammetric methods
and by planetable surveys 1957. Aerial photographs taken 1953
Polyconic projection. 1927 North American datum
10,000-foot grid based on Oklahoma coordinate system, south zone and
Texas coordinate system, north central zone
1000-meter Universal Transverse Mercator grid ticks,
zone 14, shown in blue
Dashed land lines indicate approximate locations

TRUE NORTH
MAGNETIC NORTH
APPROXIMATE MEAN
DECLINATION, 1957



ROAD CLASSIFICATION
Heavy-duty ——— Light-duty ———
Medium-duty ——— Unimproved dirt - - - - -
U.S. Route ——— State Route ———

USGS
Historical File
Topographic Division

HASTINGS, OKLA.-TEX.
N3400-W9800/15
1957

THIS MAP COMPLIES WITH NATIONAL MAP ACCURACY STANDARDS
FOR SALE BY U.S. GEOLOGICAL SURVEY, DENVER 25, COLORADO OR WASHINGTON 25, D. C.
A FOLDER DESCRIBING TOPOGRAPHIC MAPS AND SYMBOLS IS AVAILABLE ON REQUEST

AUG 13 1959

2390