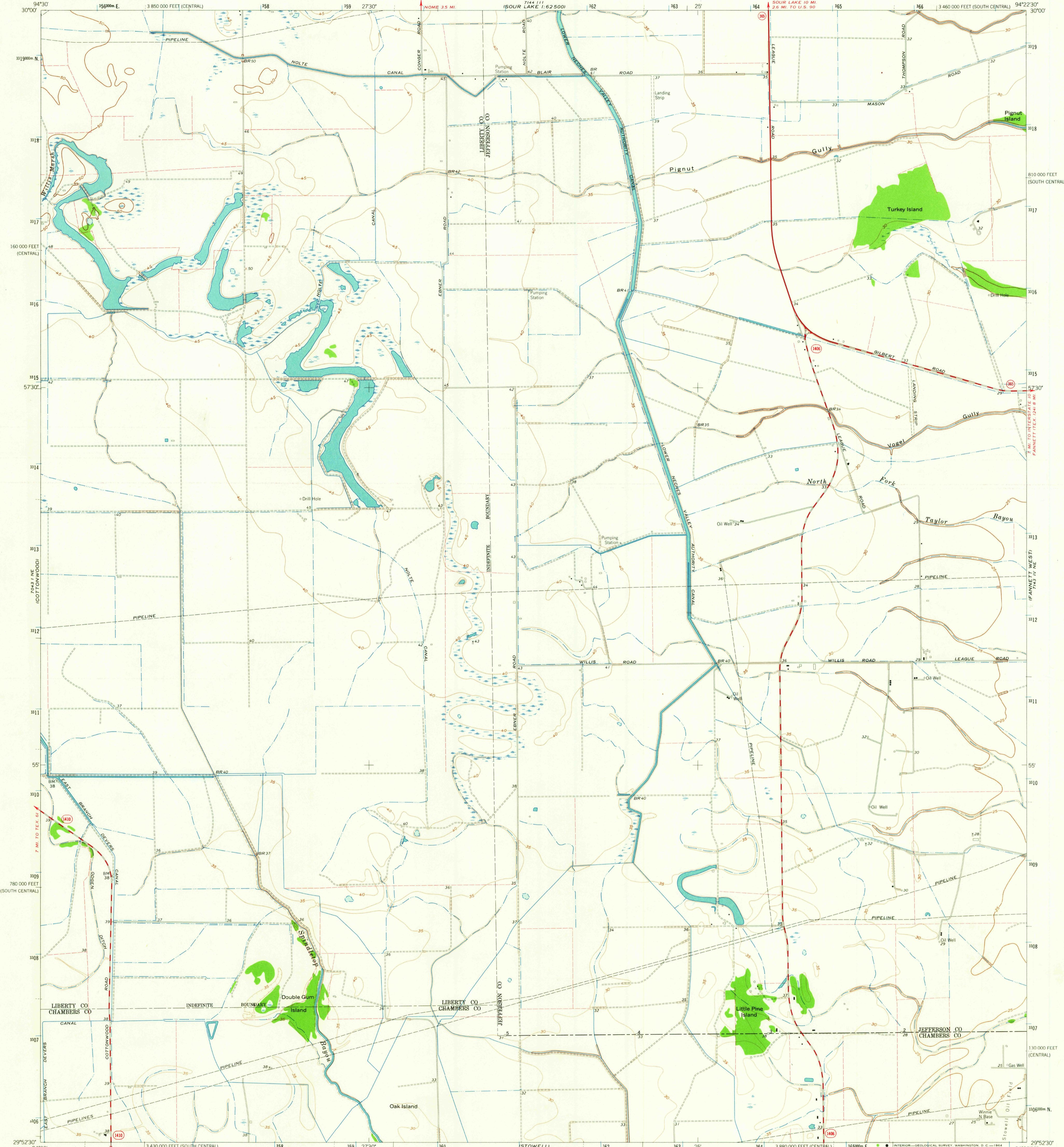


1:62,500
1:62,500

UNITED STATES
DEPARTMENT OF THE INTERIOR
GEOLOGICAL SURVEY

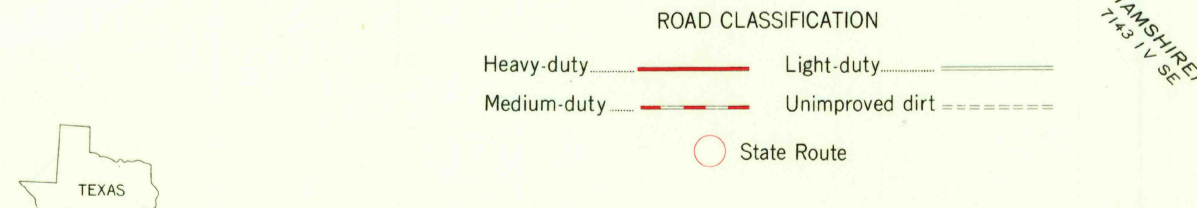
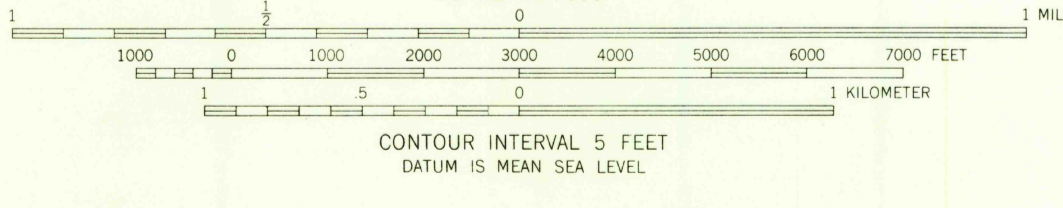
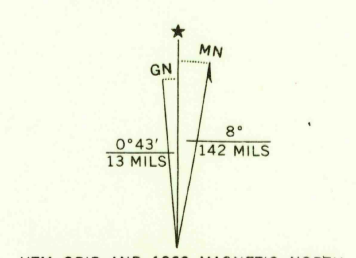
WINNIE NW QUADRANGLE
TEXAS
7.5 MINUTE SERIES (TOPOGRAPHIC)

1:62,500
1:62,500



Mapped, edited, and published by the Geological Survey

Control by USGS and USC&GS
Planimetry by photogrammetric methods from aerial photographs taken 1960. Topography enlarged from 1:31,680 scale AMS map of Nolte quadrangle. Original map by photogrammetric methods and planetable surveys 1943. Revised 1962.
Polyconic projection. 1927 North American datum
10,000-foot grid based on Texas coordinate system, south central and central zones
1000-meter Universal Transverse Mercator grid ticks, zone 15, shown in blue
Fine red dashed lines indicate selected fence lines



THIS MAP COMPLIES WITH NATIONAL MAP ACCURACY STANDARDS
FOR SALE BY U.S. GEOLOGICAL SURVEY, DENVER 25, COLORADO OR WASHINGTON 25, D.C.
A FOLDER DESCRIBING TOPOGRAPHIC MAPS AND SYMBOLS IS AVAILABLE ON REQUEST

WINNIE NW, TEX.
N2952.5-W9422.5/7.5
1962

AMS 7143 IV NW-SERIES V882

2145
JUN 2 1964