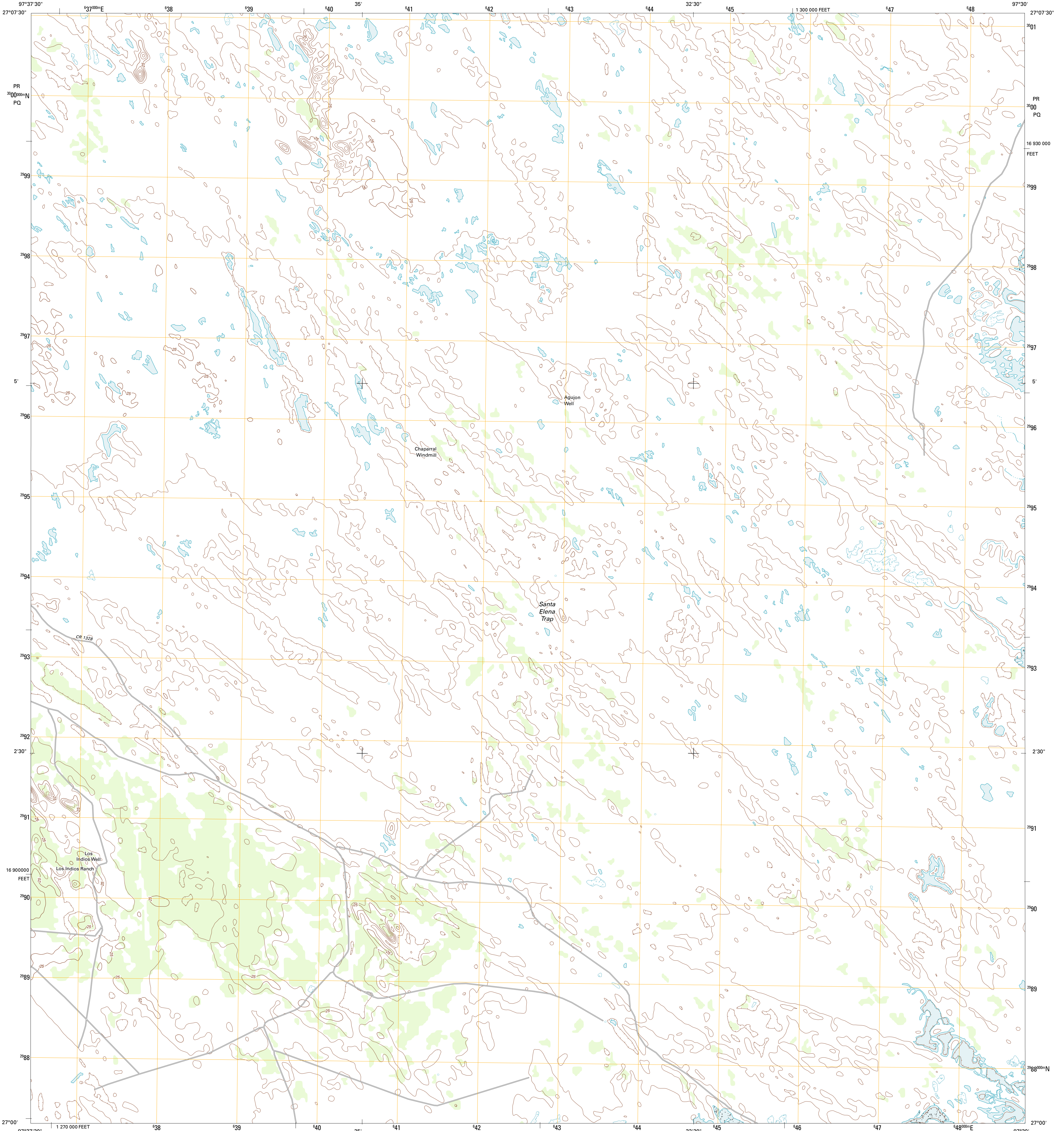




U.S. DEPARTMENT OF THE INTERIOR  
U. S. GEOLOGICAL SURVEY

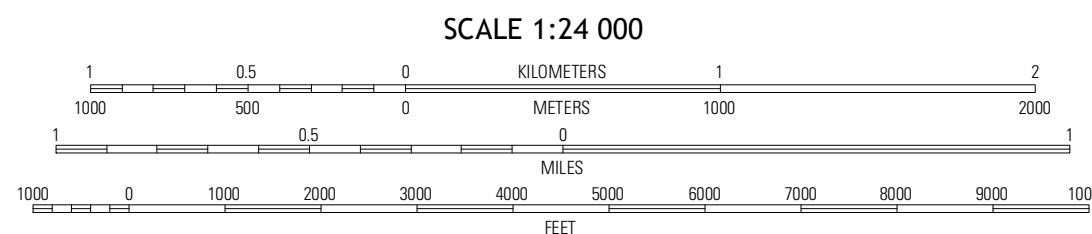
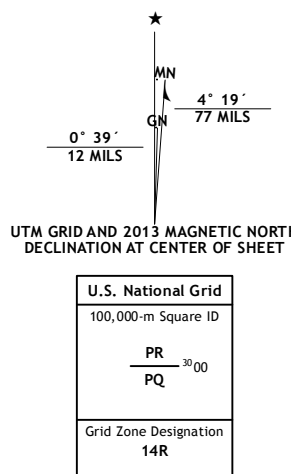


LA PARRA RANCH SE QUADRANGLE  
TEXAS-KENEDY CO.  
7.5-MINUTE SERIES



Produced by the United States Geological Survey  
North American Datum of 1983 (NAD83)  
World Geodetic System of 1984 (WGS84). Projection and  
1 000-meter grid: Universal Transverse Mercator, Zone 14B  
10 000-foot ticks: Texas Coordinate System of 1983 (south zone)

Imagery.....NAIP, April, 2010  
Roads.....©2006-2012, TomTom  
Names.....GNS, 2012  
Hydrography.....National Hydrography Dataset, 2010  
Contours.....National Elevation Dataset, 2009  
Boundaries.....Census, BWC, ISC, USGS, 1972-2012

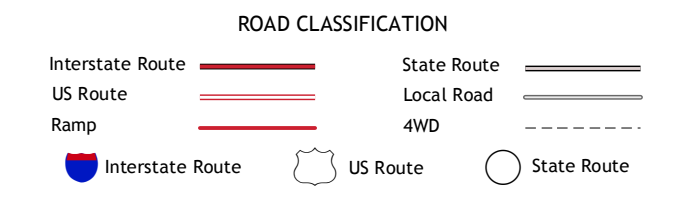


SCALE 1:24 000  
CONTOUR INTERVAL 5 FEET  
NORTH AMERICAN VERTICAL DATUM OF 1988  
This map was produced to conform with the  
National Geospatial Program US Topo Product Standard, 2011.  
A metadata file associated with this product is draft version 0.6.7



QUADRANGLE LOCATION

La Parra Ranch	La Parra Ranch NE	Yarborough Pass
La Parra Ranch SW	La Parra Ranch SE	Potrero Cortado
San Pedro Ranch	Maria Estrella Well	Potrero Lopemo NW



LA PARRA RANCH SE, TX  
2013

ADJOINING 7.5 QUADRANGLES