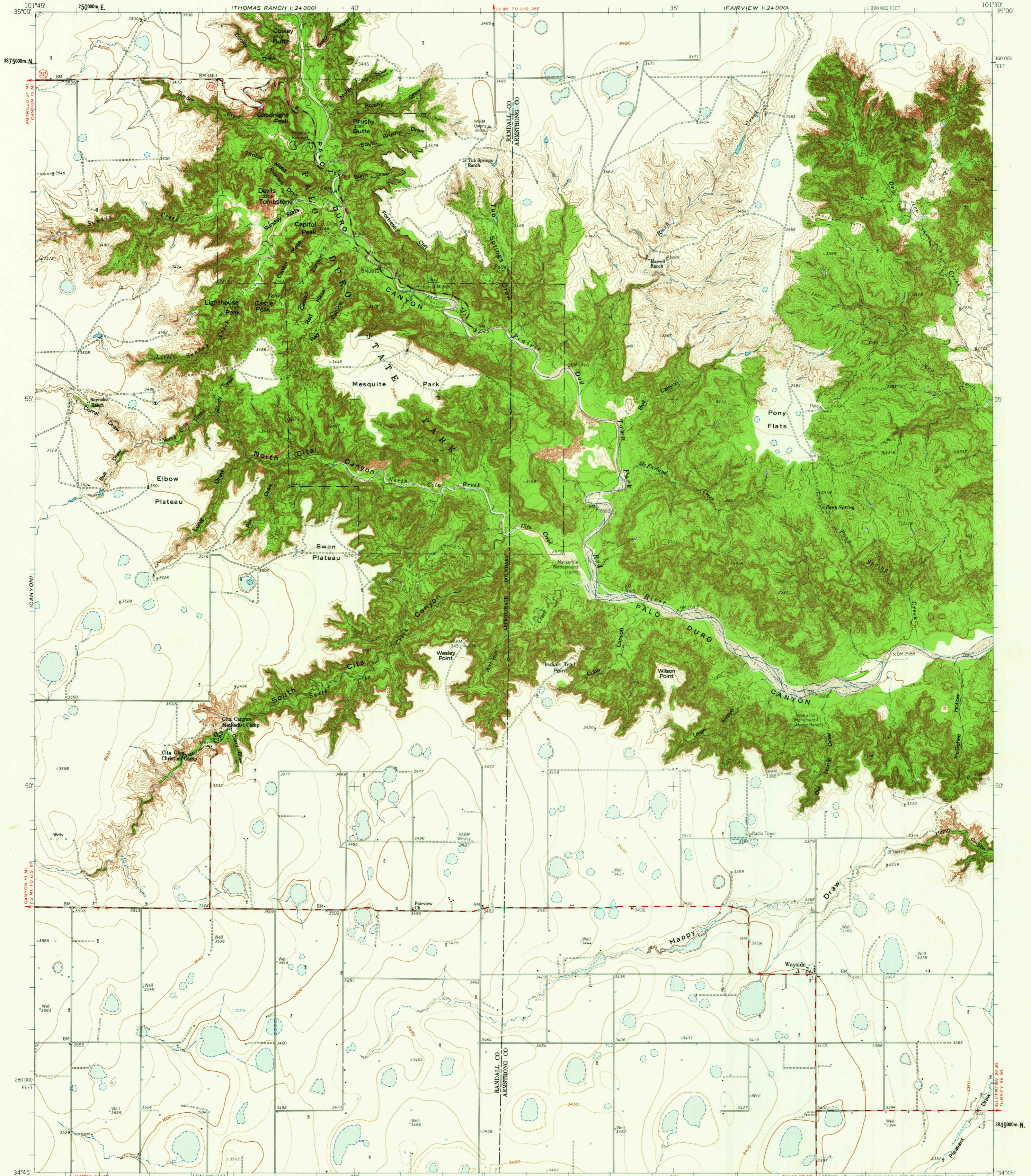


THE PLAINS!

UNITED STATES
DEPARTMENT OF THE INTERIOR
GEOLOGICAL SURVEY

WAYSIDE QUADRANGLE
TEXAS
15 MINUTE SERIES (TOPOGRAPHIC)

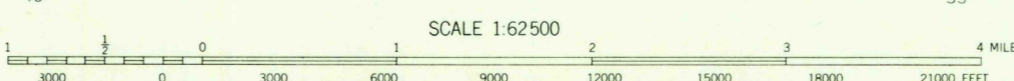
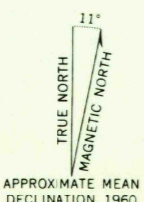
(GLAUDE)



Mapped, edited, and published by the Geological Survey
Control by USGS and USC&GS

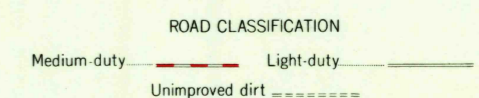
NW quarter compiled in 1960 from 1:24,000-scale map dated 1956. NE, SW, and SE quarters topography by photogrammetric methods from aerial photographs taken 1953 and planimetric surveys 1960

Polyconic projection. 1927 North American datum
10,000-foot grid based on Texas coordinate system, north zone
1000-meter Universal Transverse Mercator grid ticks, zone 14, shown in blue



CONTOUR INTERVAL 20 FEET
DOTTED LINES REPRESENT 10 FOOT CONTOURS
DATUM IS MEAN SEA LEVEL

THIS MAP COMPLIES WITH NATIONAL MAP ACCURACY STANDARDS
FOR SALE BY U.S. GEOLOGICAL SURVEY, DENVER 25, COLORADO OR WASHINGTON 25, D.C.
A FOLDER DESCRIBING TOPOGRAPHIC MAPS AND SYMBOLS IS AVAILABLE ON REQUEST



U.S.G.S.
FILE COPY
TOPOGRAPHIC DIVISION

WAYSIDE, TEX.
N3445-W10130/15

1960

MAR 19 1962

2055