

DEPARTMENT OF THE INTERIOR
FRANKLIN K. LANE, SECRETARY
U. S. GEOLOGICAL SURVEY
GEORGE OTIS SMITH, DIRECTOR

TOPOGRAPHY

HARRIS COUNTY, TEXAS

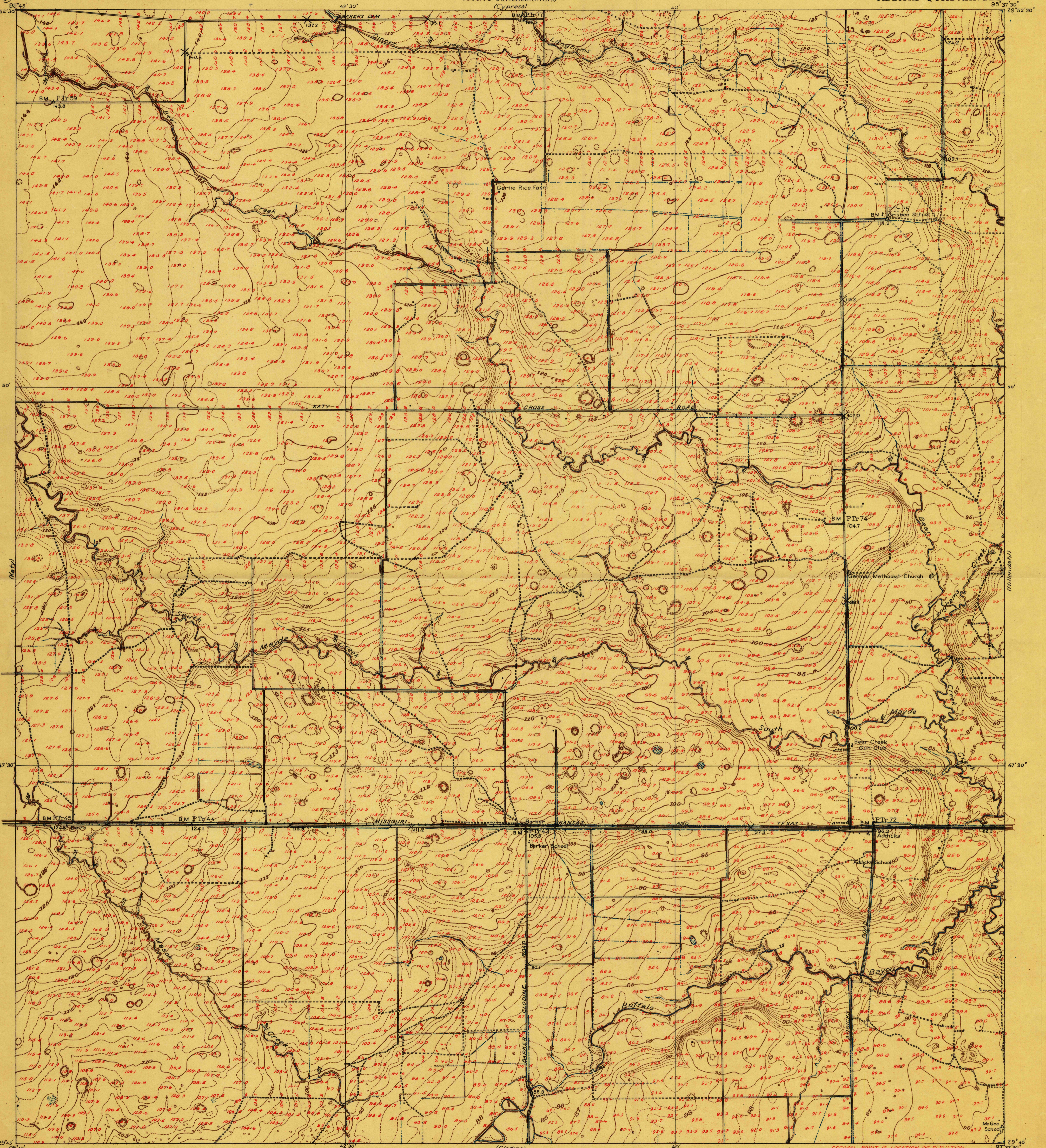
W. H. WARD, COUNTY JUDGE

W. H. LLOYD, J. A. SMITH, W. H. KISER, D. BARKER
COUNTY COMMISSIONERS

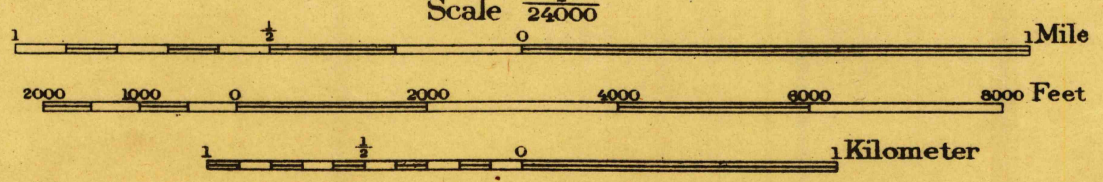
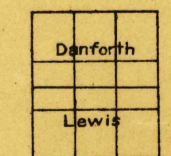
Advance sheet.
Subject to correction.

INSPECTION FILES
TOPOGRAPHY.

TEXAS
HARRIS COUNTY
ADDICKS QUADRANGLE



R. B. Marshall, Chief Geographer
Sledge Tatum, Geographer in charge
Topography by W. B. Lewis and F. A. Danforth
Control by U. S. Coast and Geodetic Survey
E. L. McNair and R. R. Monbeck
Surveyed in 1915
SURVEYED IN COOPERATION WITH HARRIS COUNTY, TEXAS



Contour interval 1 foot
Datum is mean sea level

TRUE NORTH
MAGNETIC NORTH

APPROXIMATE MEAN
DECLINATION 1915
USGS
Historical File
Topographic Division

Addicks, Tex.