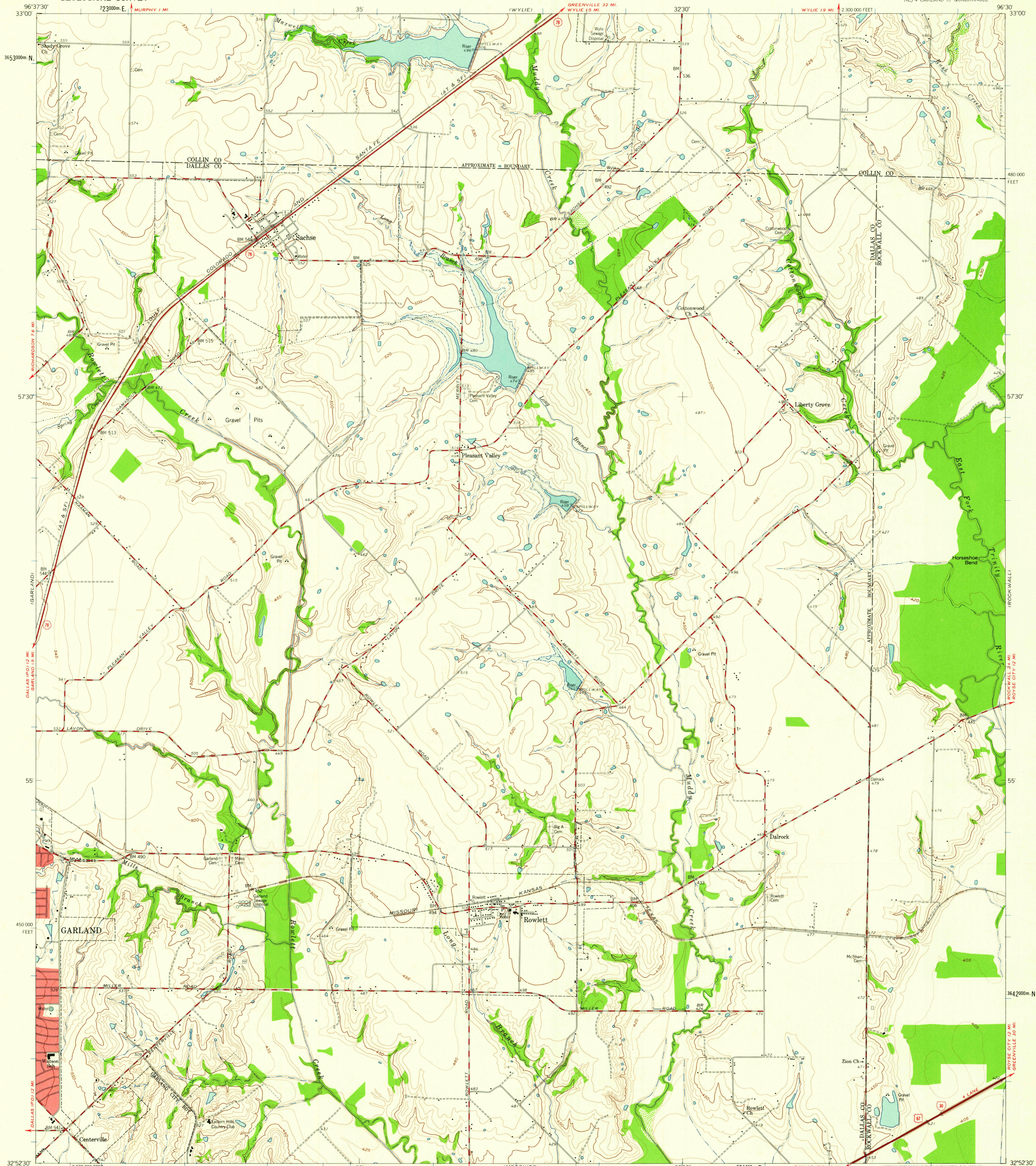
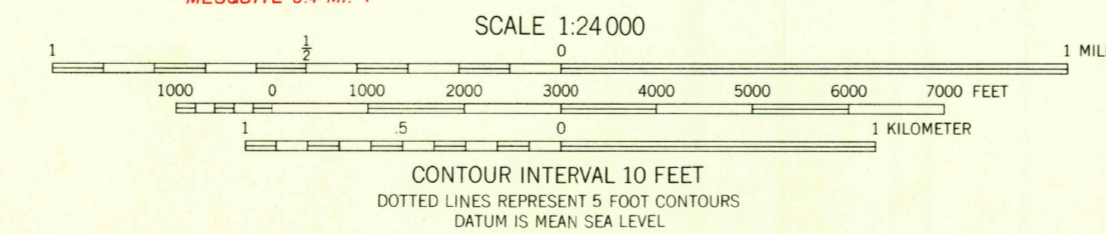


FARMERSVILLE
62 5000



Mapped, edited, and published by the Geological Survey
Control by USGS and USC&GS
Topography from aerial photographs by photogrammetric methods
Aerial photographs taken 1956. Field check 1959
Polyconic projection. 1927 North American datum
10,000-foot grid based on Texas coordinate system,
north central zone
1000-meter Universal Transverse Mercator grid ticks,
zone 14, shown in blue
Red tint indicates areas in which only
landmark buildings are shown
Areas covered by dashed light blue pattern
are subject to controlled inundation

TRUE NORTH
MAGNETIC NORTH
APPROXIMATE MEAN
DECLINATION, 1959



ROAD CLASSIFICATION

Heavy-duty	Light-duty
Medium-duty	Unimproved dirt
Interstate Route	U.S. Route
	State Route



USGS
FILE COPY
TOPOGRAPHIC DIVISION

ROWLETT, TEX.
NE/4 GARLAND 15 QUADRANGLE
N3252.5-W9630.7/5
1959

2560

NOV 17 1980