

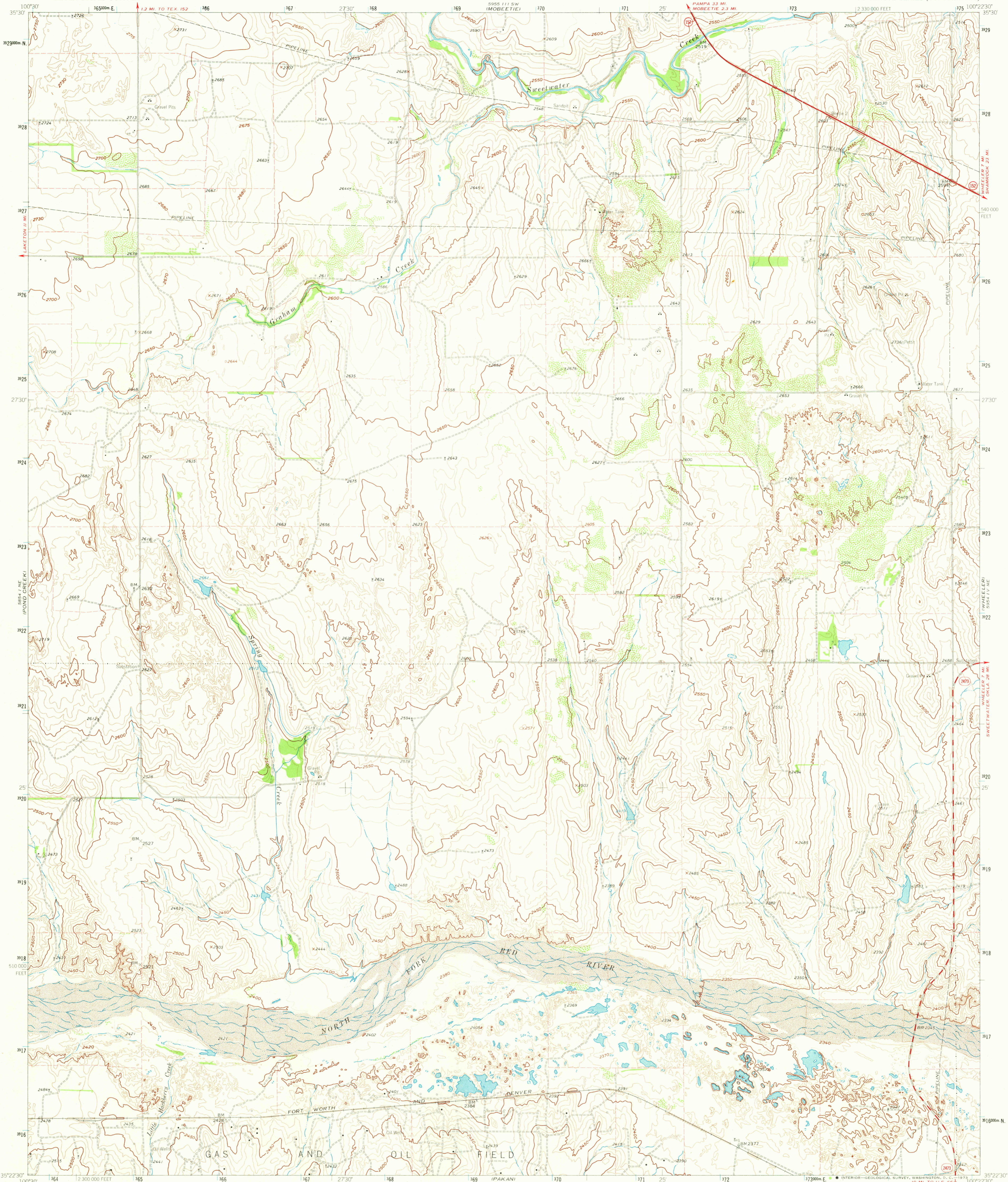
1955 85 SE
1007 85000

UNITED STATES
DEPARTMENT OF THE INTERIOR
GEOLOGICAL SURVEY

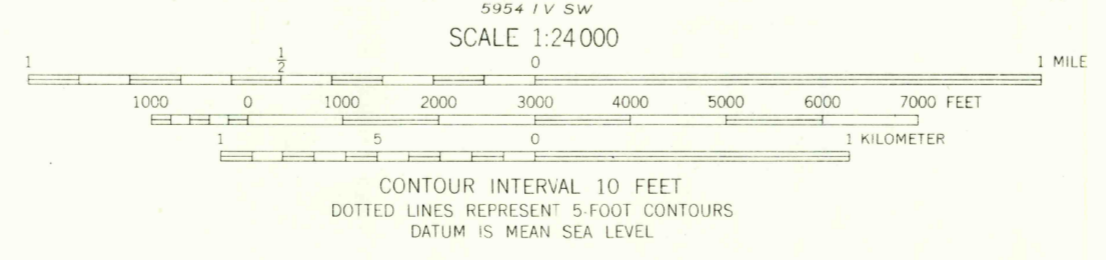
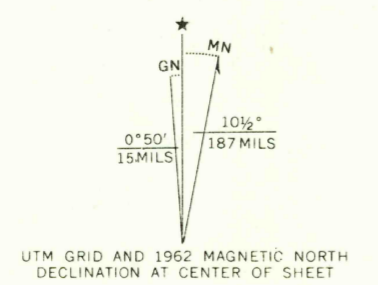
STATE OF TEXAS
TEXAS WATER COMMISSION

SPRING CREEK QUADRANGLE
TEXAS-WHEELER CO.
7.5 MINUTE SERIES (TOPOGRAPHIC)

5855 11 SE
1002 2300 E



Mapped, edited, and published by the Geological Survey
Control by USGS and USC&GS
Topography by photogrammetric methods from aerial
photographs taken 1960. Field checked 1962
Polyconic projection. 1927 North American datum
10,000 foot grid based on Texas coordinate system, north zone
1000 meter Universal Transverse Mercator grid ticks,
zone 14, shown in blue
Fine red dashed lines indicate selected fence lines



ROAD CLASSIFICATION	
Heavy-duty	Light-duty
Medium-duty	Unimproved dirt
○ State Route	

USGS
Historical File
Topographic Division

JUL 10 1973 3275

SPRING CREEK, TEX.
N3522.5-W10022.5/7.5
1962
AMS 5954 1V NW - SERIES V882

THIS MAP COMPLIES WITH NATIONAL MAP ACCURACY STANDARDS
FOR SALE BY U.S. GEOLOGICAL SURVEY, DENVER, COLORADO 80225, OR WASHINGTON, D. C. 20242
A FOLDER DESCRIBING TOPOGRAPHIC MAPS AND SYMBOLS IS AVAILABLE ON REQUEST