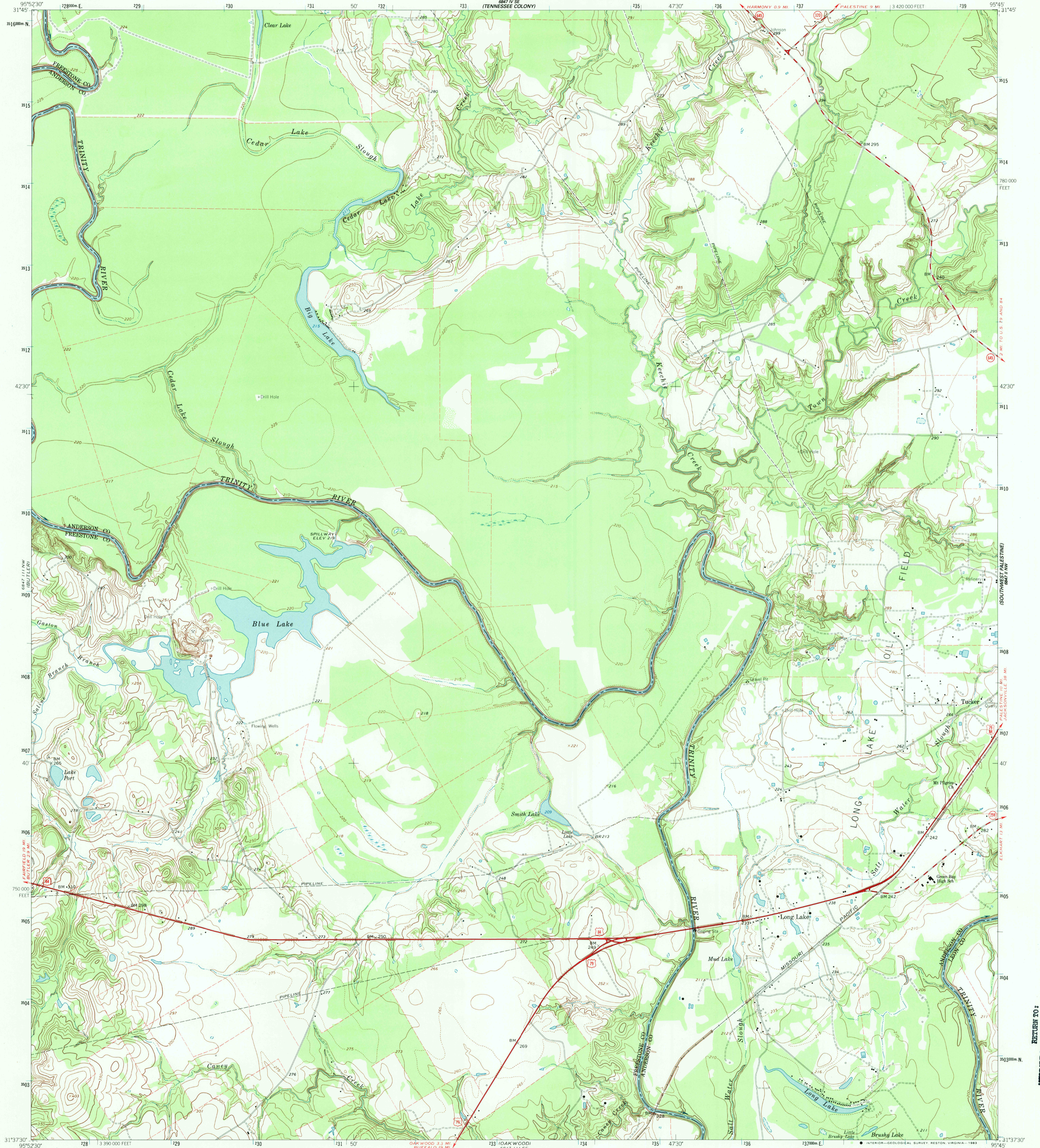
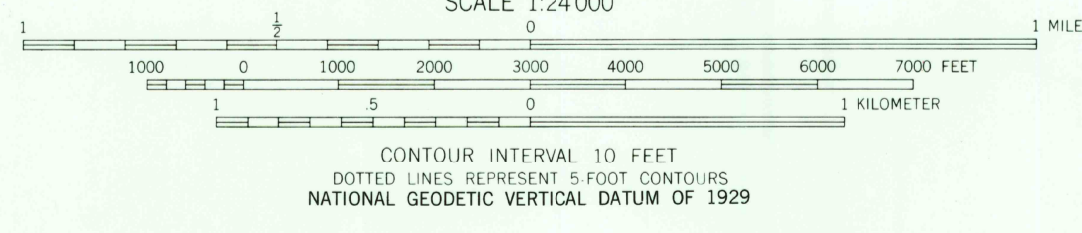
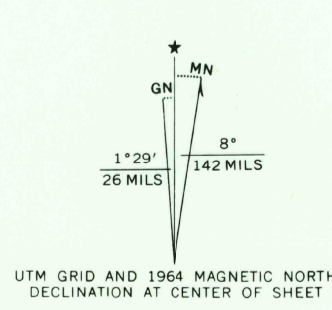


6847 IV SE

6847 IV SE  
(TENNESSEE COLONY)



Mapped, edited, and published by the Geological Survey  
Control by USGS and USC&GS  
Topography by photogrammetric methods from aerial  
photographs taken 1963. Field checked 1964  
Polyconic projection. 1927 North American datum  
10,000-foot grid based on Texas coordinate system, central zone  
1000-meter Universal Transverse Mercator grid ticks,  
zone 15, shown in blue  
Fine red dashed lines indicate selected fence lines  
To place on the predicted North American Datum 1983  
move the projection lines 14 meters south and  
26 meters east as shown by dashed corner ticks



ROAD CLASSIFICATION

Heavy-duty	Light-duty
Medium-duty	Unimproved dirt
U.S. Route	State Route

JUL 11 1965

LONG LAKE, TEX.  
N3137.5-W9545.7.5

1964

THIS MAP COMPLIES WITH NATIONAL MAP ACCURACY STANDARDS  
FOR SALE BY U. S. GEOLOGICAL SURVEY, DENVER, COLORADO 80225, OR RESTON, VIRGINIA 22092  
A FOLDER DESCRIBING TOPOGRAPHIC MAPS AND SYMBOLS IS AVAILABLE ON REQUEST

3195-324

DMA 6847 III NE-SERIES V882

RETURN TO:  
USGS AND HISTORICAL MAP ARCHIVES

700