

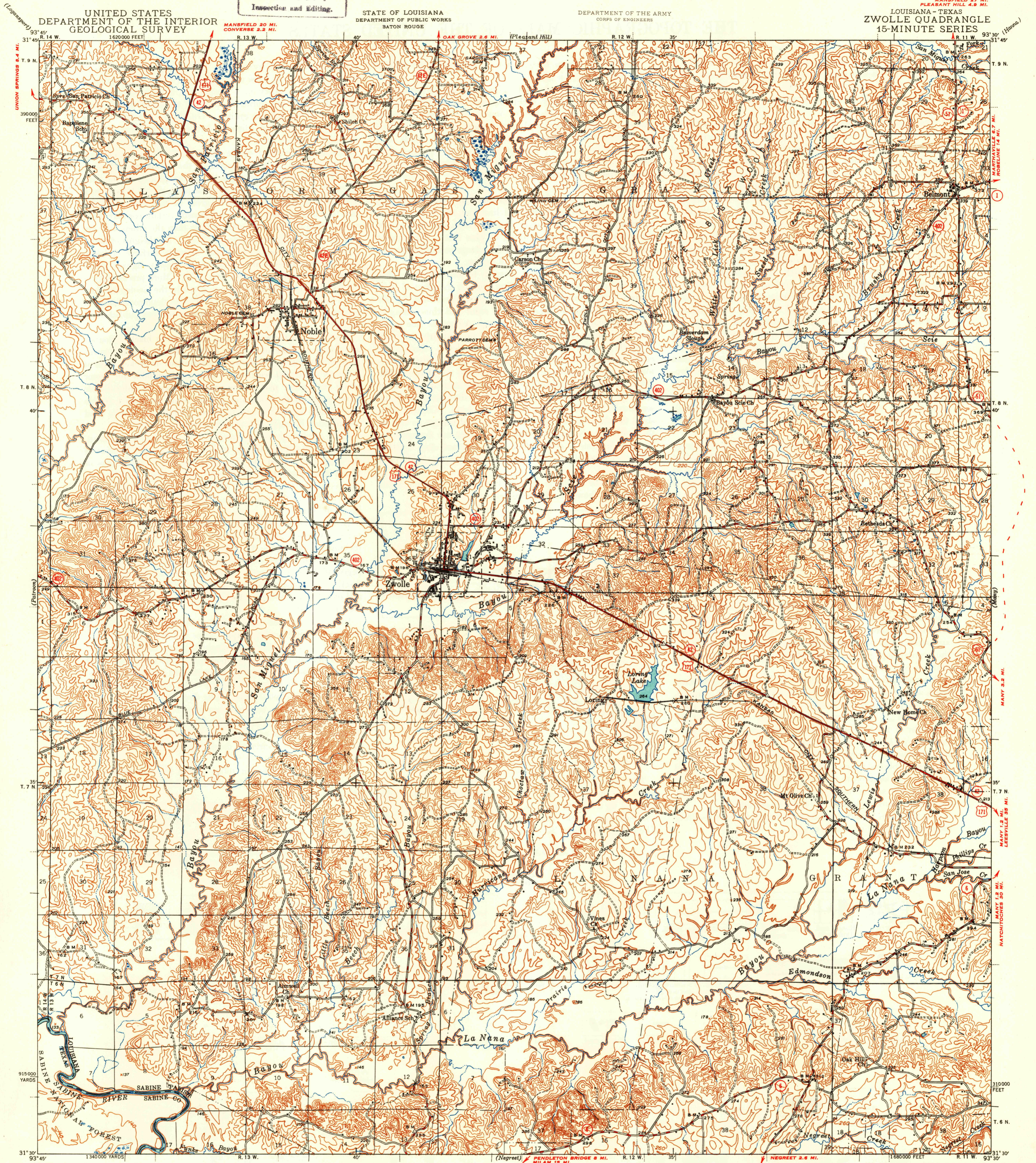
U. S. G. S.  
FILE COPY  
Inspection and Editing.

UNITED STATES  
DEPARTMENT OF THE INTERIOR  
GEOLOGICAL SURVEY

STATE OF LOUISIANA  
DEPARTMENT OF PUBLIC WORKS  
BATON ROUGE

DEPARTMENT OF THE ARMY  
CORPS OF ENGINEERS

LOUISIANA - TEXAS  
ZWOLLE QUADRANGLE  
15-MINUTE SERIES



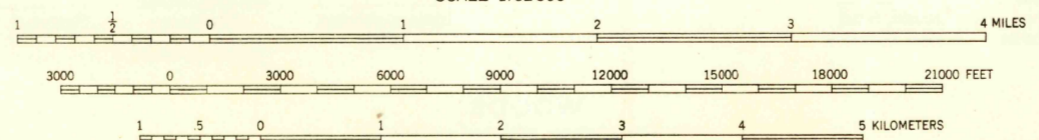
Topography by E. J. Fennell, J. B. Leachman,  
C. A. Killian, J. M. Stricklin, and J. E. Shelden  
Surveyed in 1942-1943

SCALE 1:62,500

Polyconic projection. 1927 North American datum  
5000 yard grid based on U. S. zone system, D  
10000 foot grid based on Louisiana (North)  
rectangular coordinate system

**ROAD CLASSIFICATION**  
HARD-SURFACE ALL WEATHER ROADS DRY WEATHER ROADS  
Heavy-duty ——— 4 LANE LANE Improved dirt  
Medium-duty ——— 4 LANE LANE Unimproved dirt  
Loose-surfaces, graded, or narrow hard-surface - - -  
U. S. Route State Route

TRUE NORTH  
MAGNETIC NORTH  
APPROXIMATE MEAN  
DECLINATION, 1948



Contour interval 20 feet  
Datum is mean sea level

USGS  
Historical File  
Topographic Division  
U. S. G. S.  
FILE COPY  
Inspection and Editing.

ZWOLLE, LA.-TEX.  
Edition of 1944  
reprinted 1949  
N3130-W9330/15