

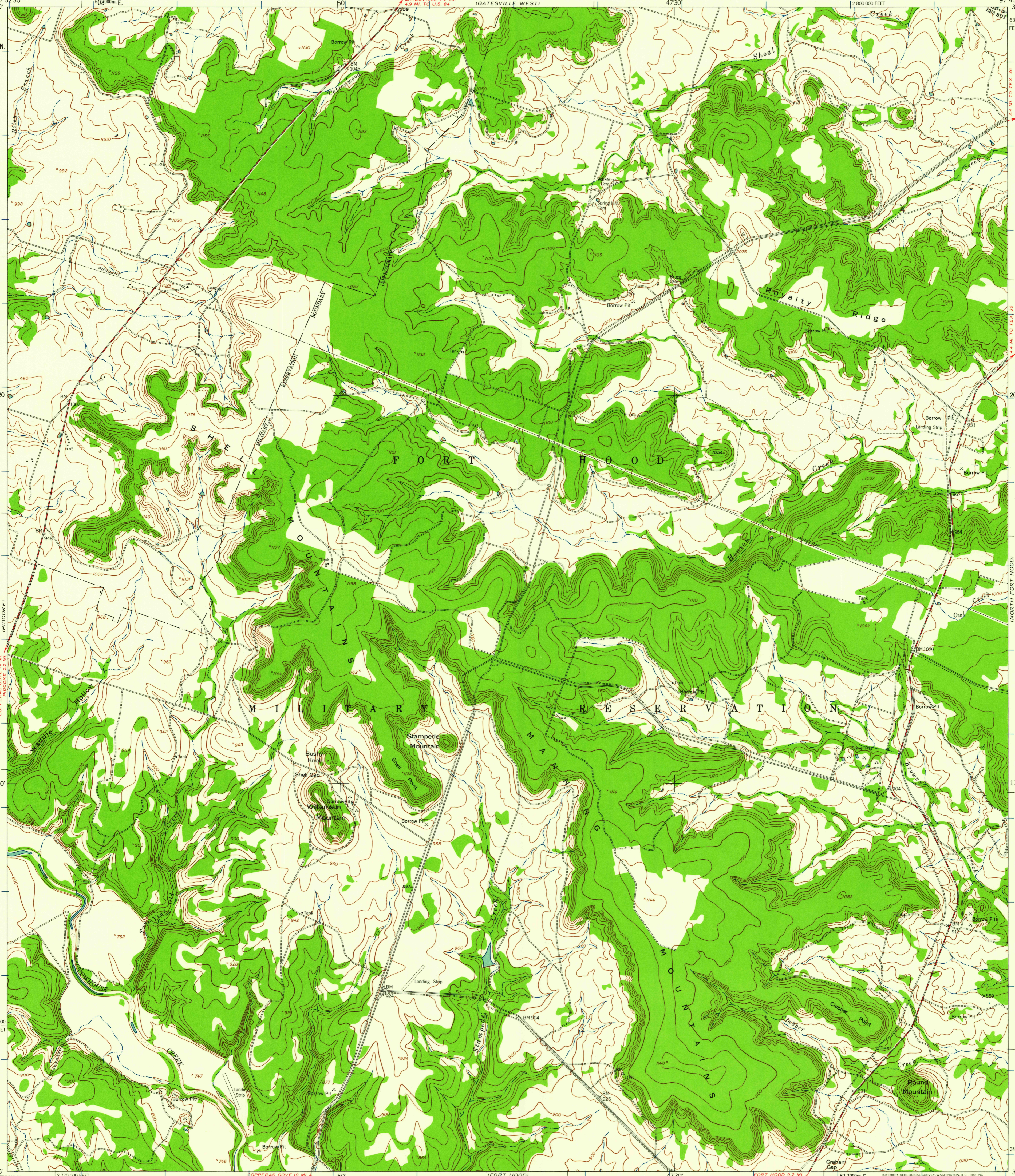
(PURMELA)
31°22'30"
3471000m. N.
20
1730
590 000
FEET
31°15'
97°52'30"

UNITED STATES
DEPARTMENT OF THE INTERIOR
GEOLOGICAL SURVEY

UNITED STATES
DEPARTMENT OF THE ARMY
CORPS OF ENGINEERS

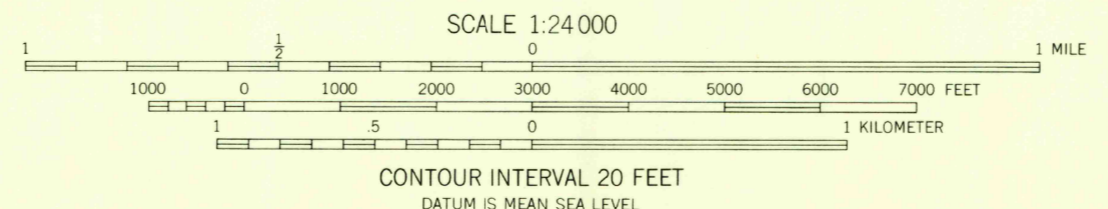
SHELL MOUNTAINS QUADRANGLE
TEXAS-CORYELL CO.
7.5 MINUTE SERIES (TOPOGRAPHIC)
SE/4 PURMELA 15' QUADRANGLE

(GATESVILLE WEST)
47°30'
2800 000
FEET
97°45'
31°22'30"
630 000
FEET
20
1730
3458000m. N.
31°15'
97°45'



Map by the Army Map Service
Published for civil use by the Geological Survey
Control by USGS, USC&GS, and USCE
Topography from aerial photographs by photogrammetric methods
Aerial photographs taken 1947. Planimetric detail revised from
aerial photographs taken 1955-1956. Field check 1958
Polyconic projection. 1927 North American datum
10,000-foot grid based on Texas coordinate system,
central zone
1000-meter Universal Transverse Mercator grid ticks,
zone 14, shown in blue

TRUE NORTH
MAGNETIC NORTH
APPROXIMATE MEAN
DECLINATION, 1958



THIS MAP COMPLIES WITH NATIONAL MAP ACCURACY STANDARDS
FOR SALE BY U. S. GEOLOGICAL SURVEY, DENVER 25, COLORADO OR WASHINGTON 25, D. C.
A FOLDER DESCRIBING TOPOGRAPHIC MAPS AND SYMBOLS IS AVAILABLE ON REQUEST



ROAD CLASSIFICATION
Medium-duty ——— Light-duty ———
Unimproved dirt =



SHELL MOUNTAINS, TEX.
SE/4 PURMELA 15' QUADRANGLE
N3115-W9745/75
1958

1961 2 5 1961
AUG 2 5 1961
POST OAK MOUNTAIN