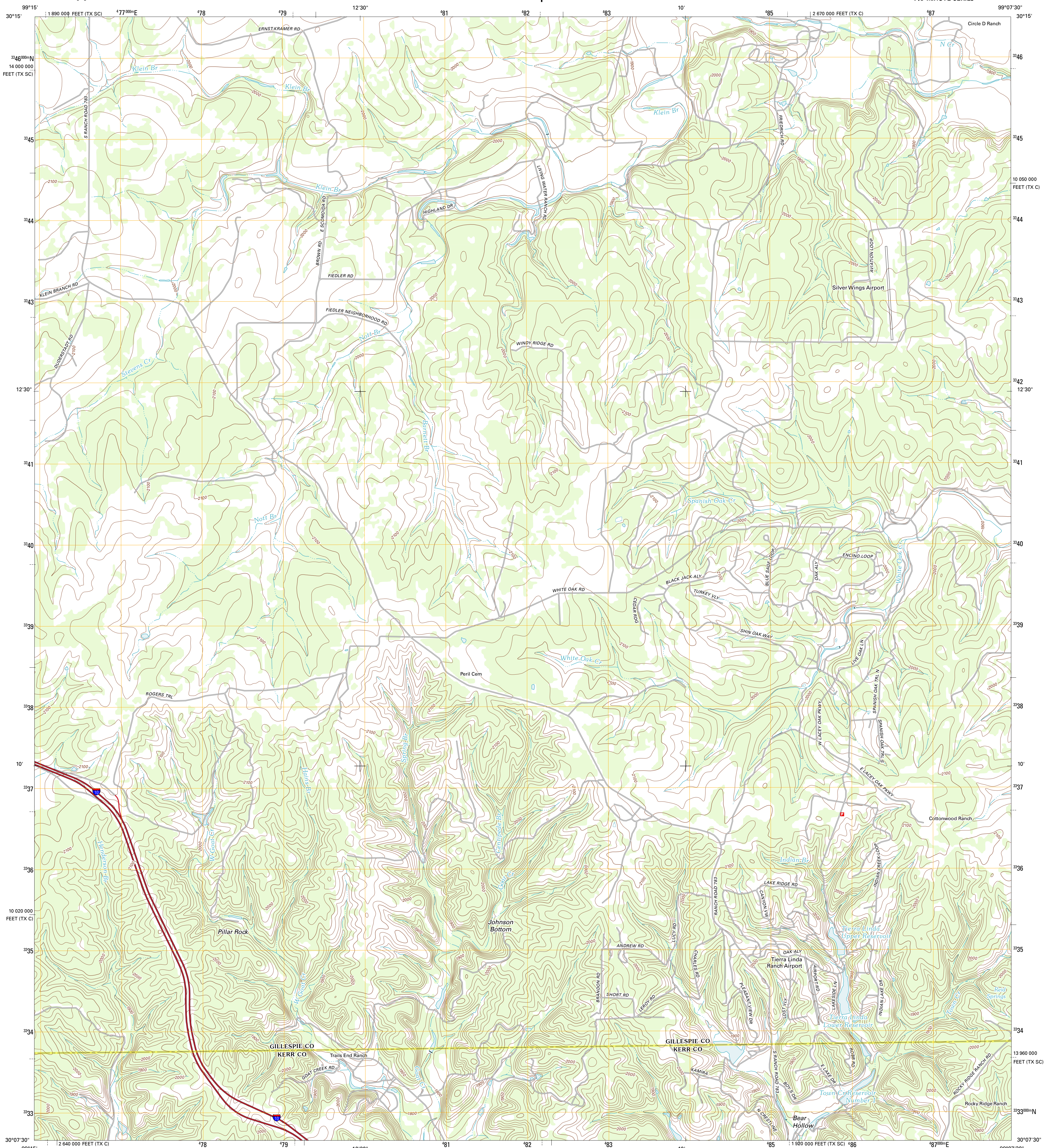




U.S. DEPARTMENT OF THE INTERIOR  
U. S. GEOLOGICAL SURVEY

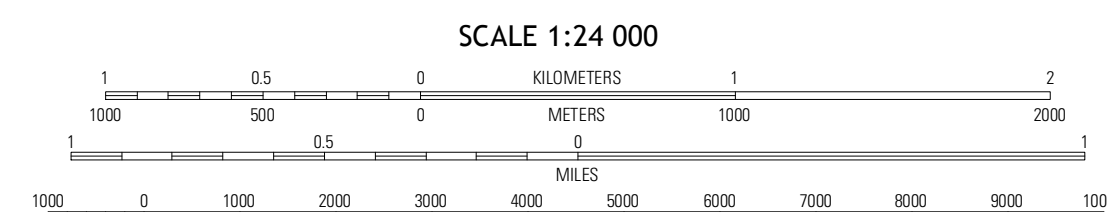
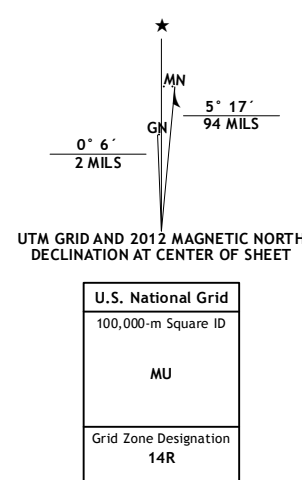


NOTT BRANCH QUADRANGLE  
TEXAS  
7.5-MINUTE SERIES



Produced by the United States Geological Survey  
North American Datum of 1983 (NAD83)  
World Geodetic System of 1984 (WGS84), Projection and  
1 000-meter grid; Universal Transverse Mercator, Zone 14R,  
10 000-foot ticks; Texas Coordinate System of 1983 (central and  
south central zones)

Imagery.....NAIP, May 2010  
Roads.....©2006-2012 TomTom  
Names.....©2006-2012 TomTom  
Hydrography.....National Hydrography Dataset, 2010  
Contours.....National Elevation Dataset, 2003  
Boundaries.....Census, IBWC, IBC, USGS, 1972-2012



CONTOUR INTERVAL 20 FEET  
NORTH AMERICAN VERTICAL DATUM OF 1988

This map was produced to conform with the  
National Geospatial Program US Topo Product Standard, 2011.  
A metadata file associated with this product is draft version 0.6.7



QUADRANGLE LOCATION

Harper West	Harper East	Roundhead
Mountain Home	<b>Nott Branch</b>	Morris Ranch
Hunt	Kerrville	Legion

ROAD CLASSIFICATION

Interstate Route	State Route
US Route	Local Road
Ramp	4WD

NOTT BRANCH, TX  
2012

ADJOINING 7.5 QUADRANGLES