

DEPARTMENT OF THE INTERIOR  
U. S. GEOLOGICAL SURVEY

GALVESTON COUNTY, TEXAS  
COUNTY COMMISSIONERS COURT  
E. B. HOLMAN, COUNTY JUDGE  
JAMES A. BODDEKER (PRECINCT 1), HUMPHREY D. BOYD (PRECINCT 2)  
VICTOR DANTIN (PRECINCT 3), AND W. T. SMITH (PRECINCT 4)  
C. C. WASHINGTON, COUNTY ENGINEER

TEXAS  
(GALVESTON COUNTY)  
GENOA QUADRANGLE

Advance sheet  
Subject to correction

29° 33' 45" 95° 15' 12' 30" 10' 95° 07' 30" 29° 33' 45"

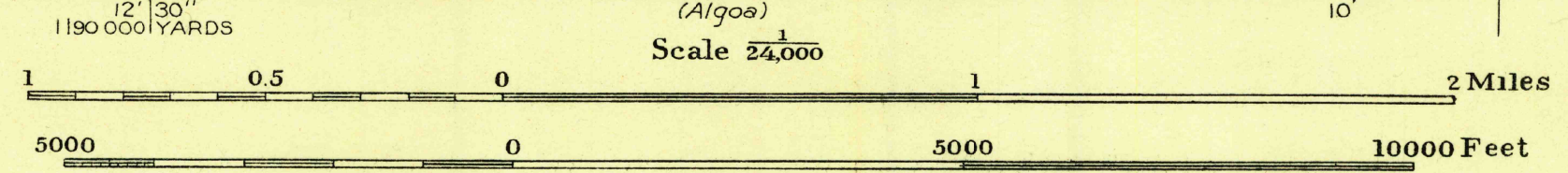


THIS AREA IS SHOWN ON THE MAP OF THE  
GENOA QUADRANGLE SURVEYED IN 1916,  
SCALE 1:31,680

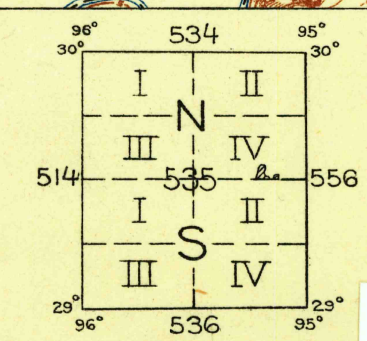
670 000  
YARDS

H. H. Hodgeson, Division Engineer  
Topography by S.T. Penick  
Control by U. S. Geological Survey and  
Texas Reclamation Department  
Surveyed in 1929

TRUE NORTH  
MAGNETIC NORTH  
APPROXIMATE MEAN  
DECLINATION, 1929



Contour interval 1 foot  
Datum is mean sea level



Polyconic projection, North American datum  
5000 yard grid based upon U. S. zone system, D

USGS  
Historical File  
Topographic Division

GENOA, TEX.



USGS Library  
Reston, VA.  
Texas Archive