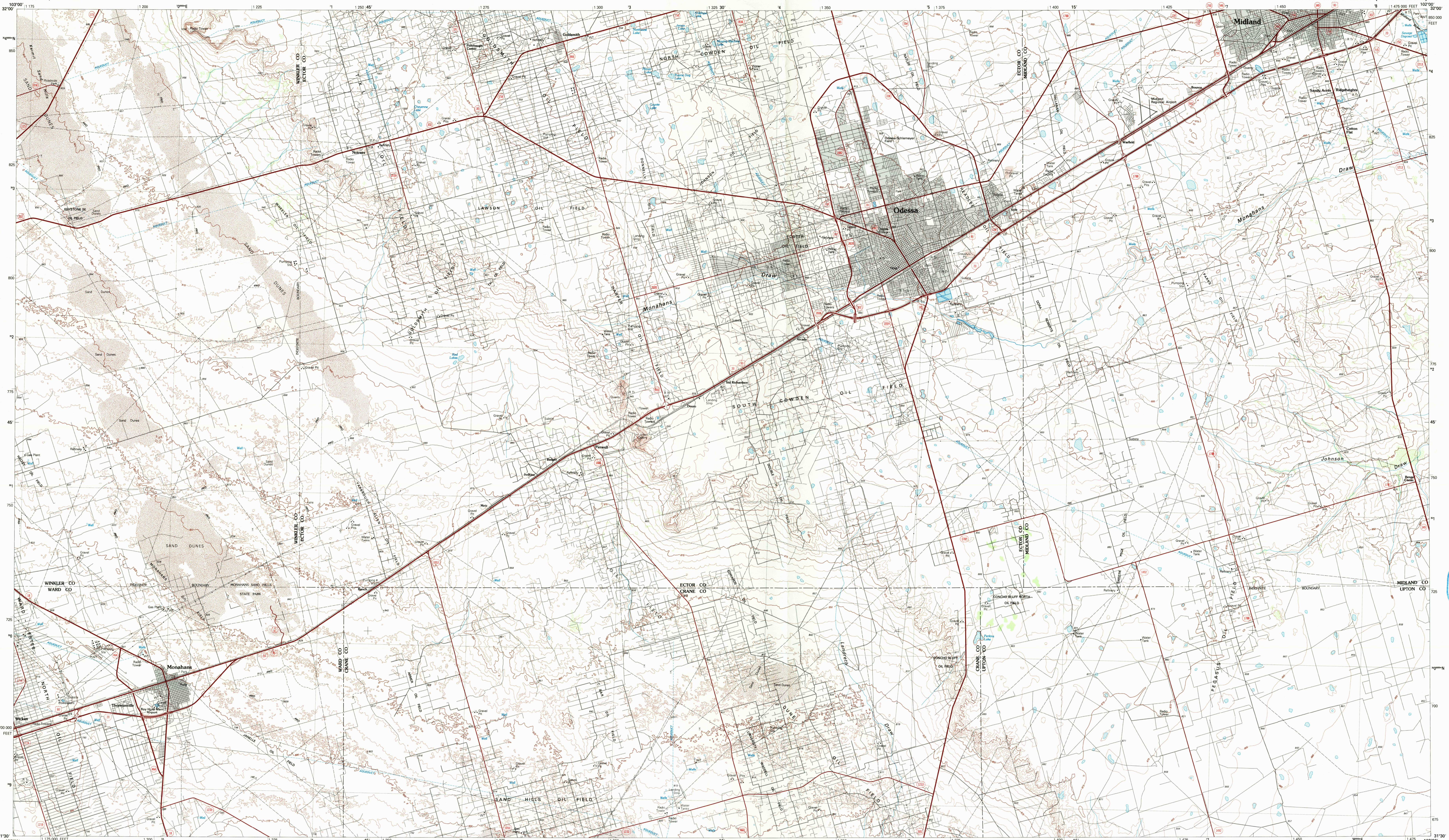


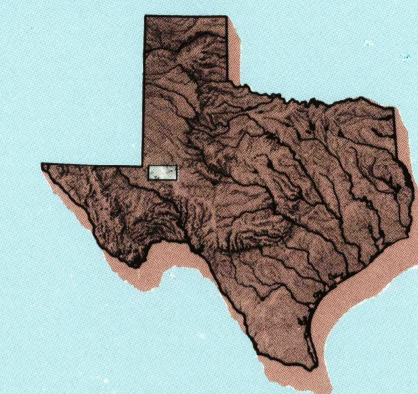
ODESSA, TEXAS

30X60 MINUTE SERIES (TOPOGRAPHIC)



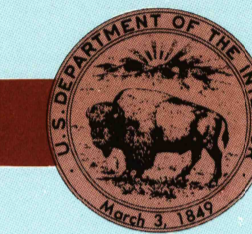
Odessa TEXAS

1:100 000-scale metric topographic map



30 X 60 MINUTE QUADRANGLE SHOWING

- Contours and elevations in meters
- Highways, roads and other manmade structures
- Water features
- Woodland features
- Geographic names



GEOLOGICAL SURVEY

1986

Produced by the United States Geological Survey  
 Compiled from USGS 1:24 000-scale topographic maps dated 1964-1981 and other source data. Revised information not field checked. Map edited 1986.  
 1927 North American Datum (NAD 27). Projection and 10 000-meter-grid: Universal Transverse Mercator, zone 13 25 000-foot ticks. Texas coordinate system, central zone.  
 The difference between NAD 27 and North American Datum of 1983 (NAD 83) is too small to show at this scale. The values of the shift between the datums for 7.5-minute intersections are given in USGS Bulletin 1875.  
 There may be private inholdings within the boundaries of the National or State reservations shown on this map.

CONTOUR INTERVAL: 5 METERS  
 NATIONAL GEODETIC VERTICAL DATUM OF 1929  
 ELEVATIONS SHOWN TO THE NEAREST METER

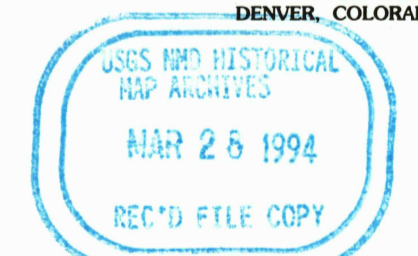
THIS MAP COMPLIES WITH NATIONAL MAP ACCURACY STANDARDS

CONVERSION TABLE		DECLINATION DIAGRAM		ADJOINING MAPS		
Meters	Feet	1°	15'	1	2	3
1	3.2808			1	2	3
2	6.5617			4	5	
3	9.8425			6	7	
4	13.1234			8	8	
5	16.4042					
6	19.6850					
7	22.9659					
8	26.2467					
9	29.5275					
10	32.8084					

To convert meters to feet multiply by 3.2808  
 To convert feet to meters multiply by 0.3048

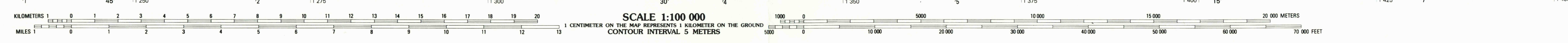
UTM grid convergence (GN) and false meridian declination (M) at center of map. Diagram is approximate.

FOR SALE BY U.S. GEOLOGICAL SURVEY  
 DENVER, COLORADO 80225, OR RESTON, VIRGINIA 22092



Topographic Map Symbols

- Primary highway, hard surface
- Secondary highway, hard surface
- Light duty road, principal street, hard or improved surface
- Other road or street, soil
- Route marker, Interstate, U. S. State
- Railroad: standard gage; narrow gage
- Bridge: overpass; underpass
- Tunnel: road; railroad
- Built up area, locality, elevation
- Airport, landing field, landing strip
- National boundary
- State boundary
- County boundary
- National or State reservation boundary
- Land grant boundary
- U. S. public lands survey: range, township, section
- Range, township, section line, protected
- Power transmission line; pipeline
- Dam: dam with back
- Cemetery, building
- Windmill; water well; spring
- Mine shaft; adit or cave; mine, quarry; gravel pit
- Campground; picnic area; U. S. location monument
- Raise, sea wall
- Distorted surface: strip mine, levee, sand
- Contours: index; intermediate; supplementary
- Bathymetric contours: index; intermediate
- Stream, lake, perennial; intermittent
- Rubble, large and small; balsa, logs and small
- Area to be submerged; marsh, swamp
- Land subject to controlled inundation; woodland
- Scrub; mangrove
- Orchard; vineyard



ODESSA, TEXAS  
 31102-E1-TM-100  
 1986