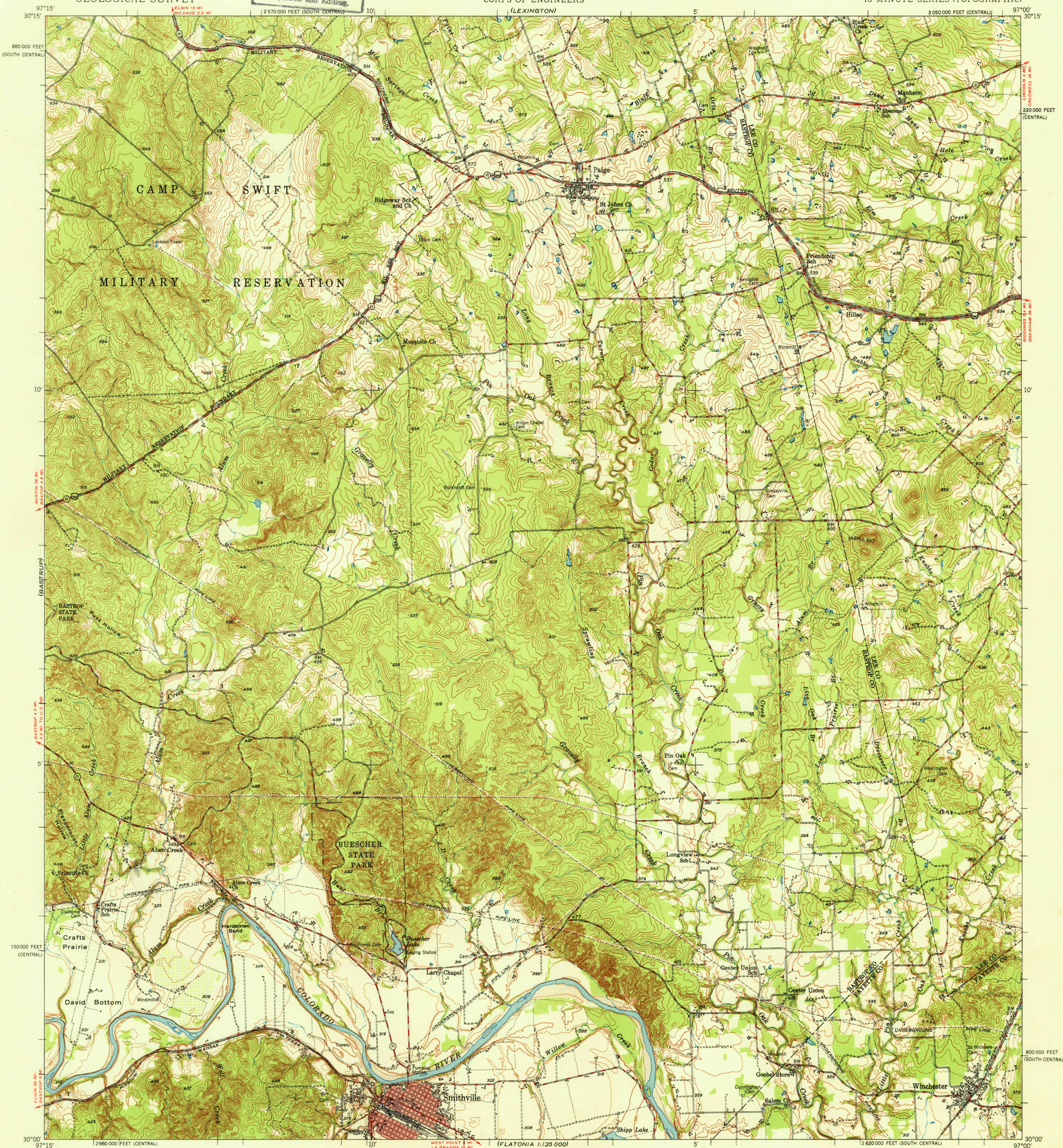


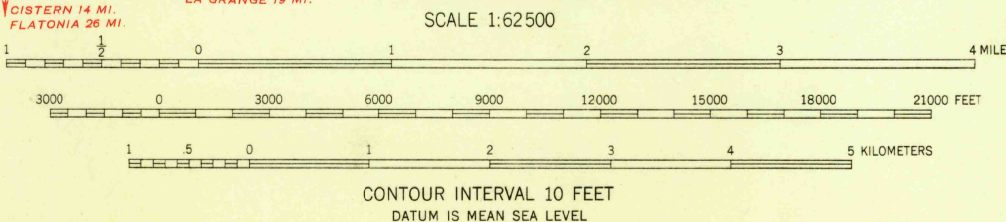
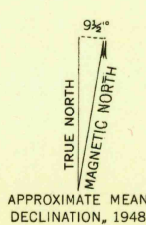
U.S.G.S.
FILE COPY
Inspection and Editing.



Mapped by the Army Map Service
Edited and published by the Geological Survey

Control by USC&GS and AMS
Topography from aerial photographs by multiplex methods
Aerial photographs taken 1947. Field check 1948
Polyconic projection. 1927 North American datum
10,000-foot grids based on Texas coordinate system,
central and south central zones

No distinction is made between dwellings, barns,
commercial and industrial buildings
Red tint indicates area in which only
landmark buildings are shown



THIS MAP COMPLIES WITH NATIONAL MAP ACCURACY STANDARDS
FOR SALE BY U. S. GEOLOGICAL SURVEY, FEDERAL CENTER, DENVER, COLORADO OR WASHINGTON 25, D. C.
A FOLDER DESCRIBING TOPOGRAPHIC MAPS AND SYMBOLS IS AVAILABLE ON REQUEST

U.S.G.S.
FILE COPY
Inspection and Editing.

ROAD CLASSIFICATION
HARD-SURFACE ALL WEATHER ROADS
Heavy-duty ———— **LANE IS LANE** Improved dirt
Medium-duty ———— **LANE IS LANE** Unimproved dirt
Loose-surface, graded, or narrow hard-surface
U. S. Route State Route

SMITHVILLE, TEX.
N3000-W9700/15
EDITION OF 1950