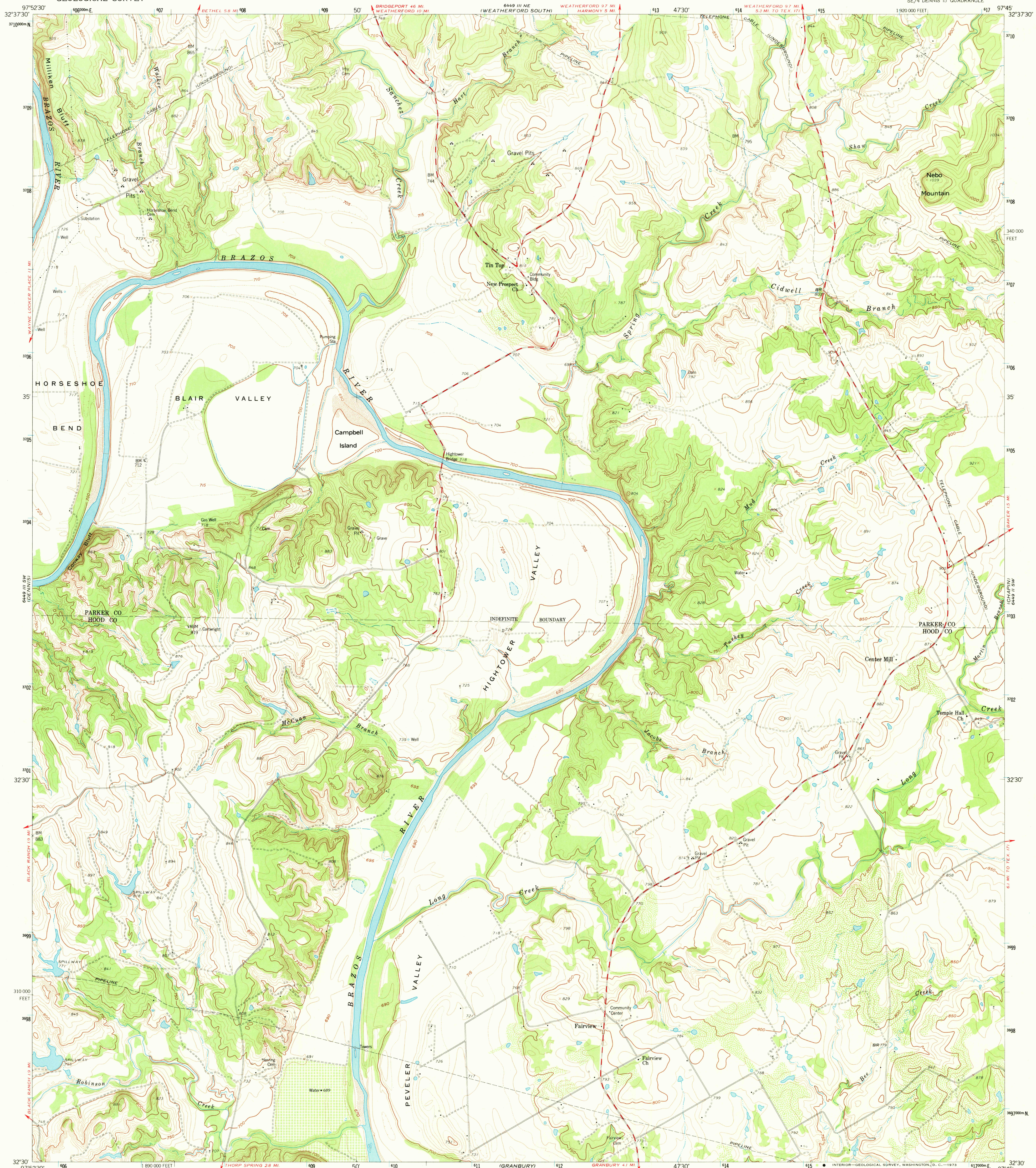


6448 III SW
189000 N

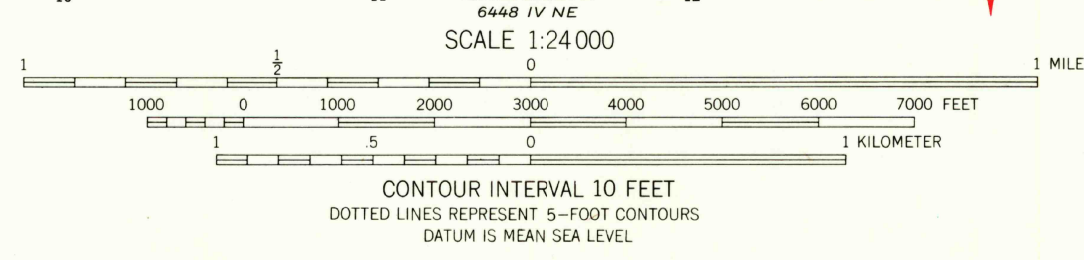
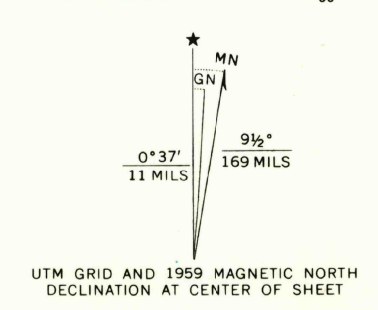
UNITED STATES
DEPARTMENT OF THE INTERIOR
GEOLOGICAL SURVEY

TIN TOP QUADRANGLE
TEXAS
7.5 MINUTE SERIES (TOPOGRAPHIC)
SE/4 DENNIS 15' QUADRANGLE

6448 III NW
189000 N



Mapped, edited, and published by the Geological Survey
Control by USGS and USC&GS
Topography from aerial photographs by photogrammetric methods
Aerial photographs taken 1957. Field check 1959
Polyconic projection. 1927 North American datum
10,000-foot grid based on Texas coordinate system,
north central zone
1000-meter Universal Transverse Mercator grid ticks,
zone 14, shown in blue



ROAD CLASSIFICATION	
Medium-duty	Light-duty
Unimproved dirt	

THIS MAP COMPLIES WITH NATIONAL MAP ACCURACY STANDARDS
FOR SALE BY U.S. GEOLOGICAL SURVEY, DENVER, COLORADO 80225, OR WASHINGTON, D.C. 20242
A FOLDER DESCRIBING TOPOGRAPHIC MAPS AND SYMBOLS IS AVAILABLE ON REQUEST

TIN TOP, TEX.
SE/4 DENNIS 15' QUADRANGLE
N3230-W9745/7.5
1959
AMS 6448 III SE-SERIES 9872

MAY 2 1973

USGS
HISTORICAL FILE
TOPOGRAPHIC DIVISION

1570