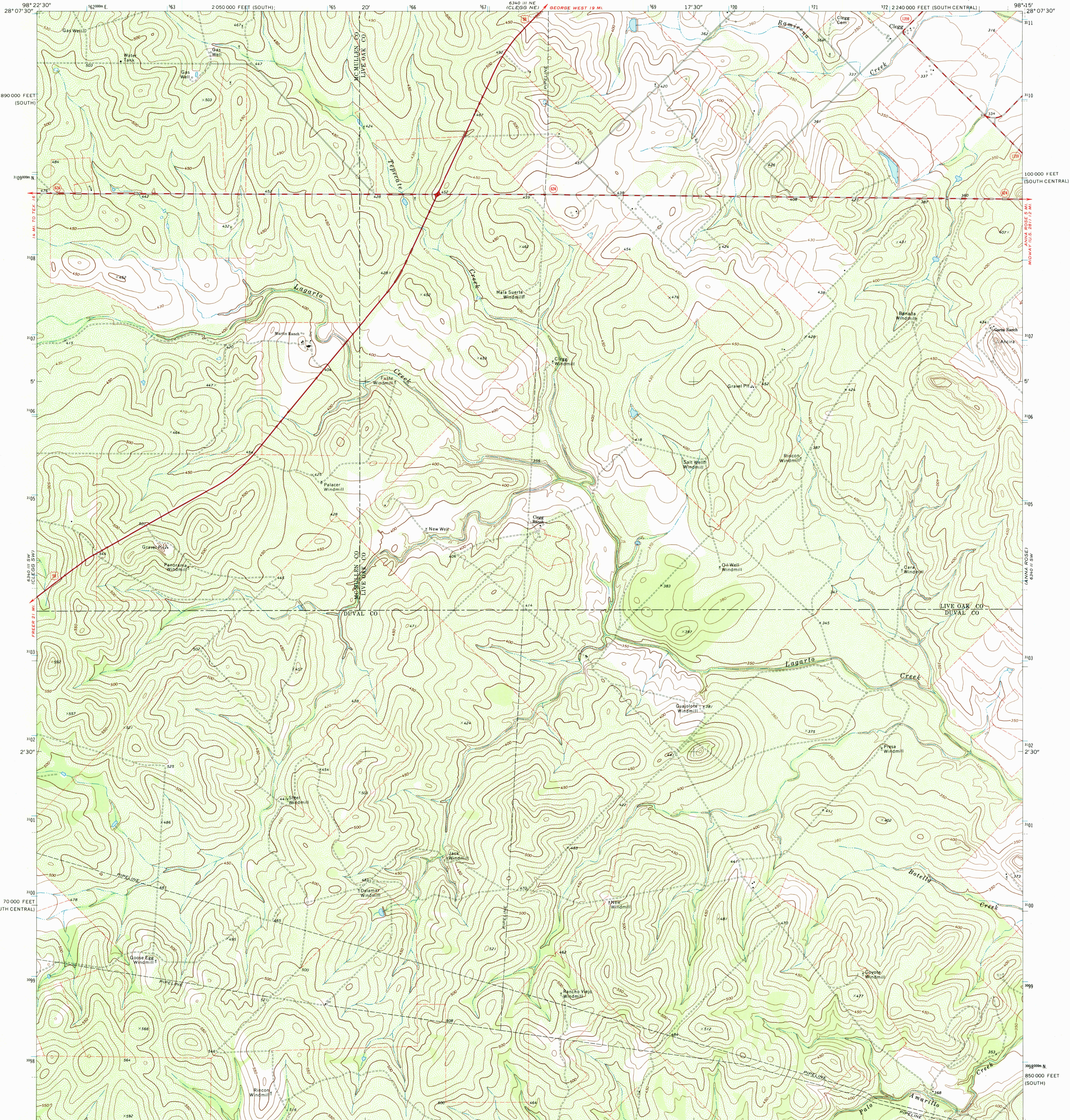


UNITED STATES
DEPARTMENT OF THE INTERIOR
GEOLOGICAL SURVEY

CLEGG QUADRANGLE
TEXAS

7.5 MINUTE SERIES (TOPOGRAPHIC)



Mapped, edited, and published by the Geological Survey

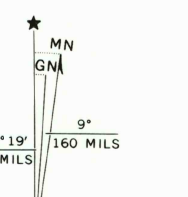
Control by USGS and USC&GS

Topography by photogrammetric methods from aerial photographs taken 1968. Field checked 1969

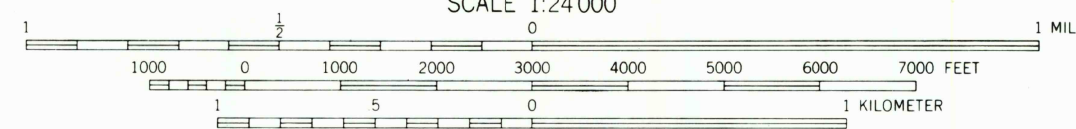
Polyconic projection. 1927 North American Datum 10,000-foot grids based on Texas coordinate system, south central and south zones 1000-meter Universal Transverse Mercator grid ticks, zone 14, shown in blue

Fine red dashed lines indicate selected fence lines

To place on the predicted North American Datum 1983 move the projection lines 26 meters south and 29 meters east as shown by dashed corner ticks



UTM GRID AND 1969 MAGNETIC NORTH DECLINATION AT CENTER OF SHEET



CONTOUR INTERVAL 10 FEET
NATIONAL GEODETIC VERTICAL DATUM OF 1929

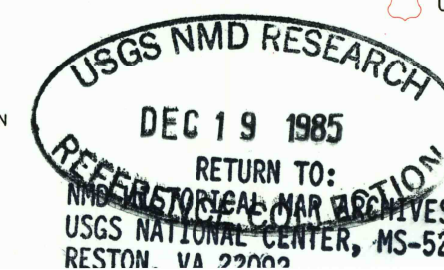
THIS MAP COMPLIES WITH NATIONAL MAP ACCURACY STANDARDS
FOR SALE BY U.S. GEOLOGICAL SURVEY, DENVER, COLORADO 80225, OR RESTON, VIRGINIA 22092
A FOLDER DESCRIBING TOPOGRAPHIC MAPS AND SYMBOLS IS AVAILABLE ON REQUEST

ROAD CLASSIFICATION
Primary highway, all weather. Light-duty road, all weather.
hard surface. improved surface.
Secondary highway, all weather. Unimproved road, fair or dry
hard surface. weather.
U.S. Route. State Route.



QUADRANGLE LOCATION

2898-121



CLEGG, TEX.

28098-A3-TF-024

1969

DMA 6340 III SE-SERIES V882