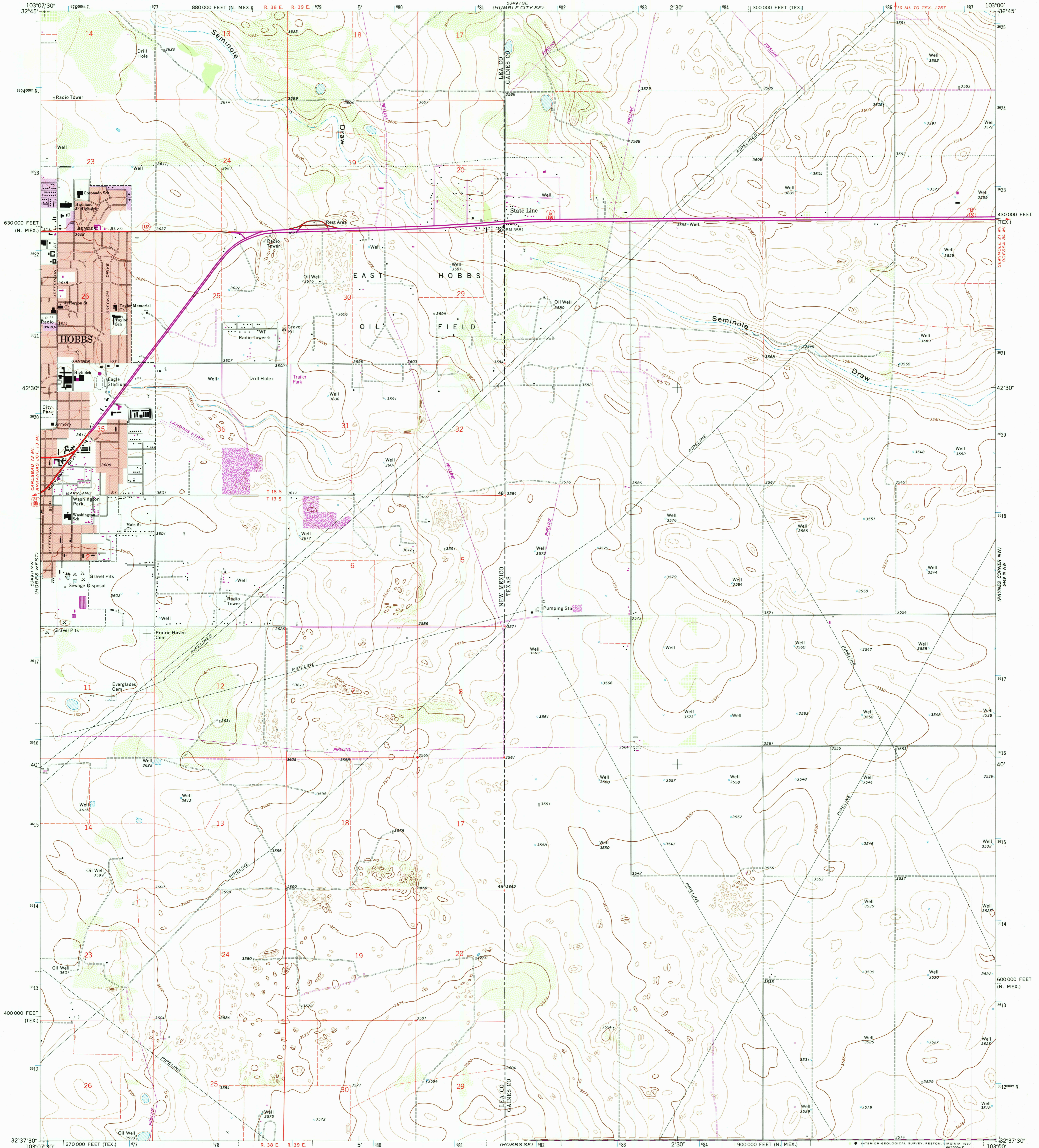
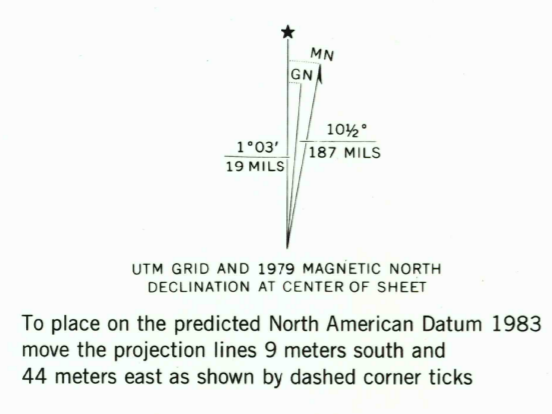


UNITED STATES
DEPARTMENT OF THE INTERIOR
GEOLOGICAL SURVEY

HOBBES EAST QUADRANGLE
TEXAS-NEW MEXICO
7.5 MINUTE SERIES (TOPOGRAPHIC)



Mapped, edited, and published by the Geological Survey
Control by USGS and NOS/NOAA
Planimetry by photogrammetric methods from aerial photographs taken 1967. Topography by planetable surveys 1969.
Polyconic projection. 1927 North American Datum
10,000-foot grid based on Texas coordinate system, north central zone, and New Mexico coordinate system, east zone 1000-meter Universal Transverse Mercator grid ticks, zone 13, shown in blue
Red tint indicates area in which only landmark buildings are shown
Fine red dashed lines indicate selected fence lines
Revisions shown in purple compiled from aerial photographs taken 1977 and other source data. This information not field checked. Map edited 1979
Purple tint indicates extension of urban areas



SCALE 1:24 000
CONTOUR INTERVAL 5 FEET
NATIONAL GEODETIC VERTICAL DATUM OF 1929

ROAD CLASSIFICATION
Primary highway, all weather, hard surface
Light-duty road, all weather, improved surface
Unimproved road, fair or dry weather
U.S. Route
State Route

THIS MAP COMPLIES WITH NATIONAL MAP ACCURACY STANDARDS
FOR SALE BY U.S. GEOLOGICAL SURVEY, DENVER, COLORADO 80225, OR RESTON, VIRGINIA 22092
A FOLDER DESCRIBING TOPOGRAPHIC MAPS AND SYMBOLS IS AVAILABLE ON REQUEST

QUADRANGLE LOCATION
3203-414
SEP 13 1988
REC'D FILE COPY
HOBBES EAST, TEX.-N. MEX.
32103-F1-1F-024
1969
PHOTOREVISED 1979
DMA 5349 II NE--SERIES V881